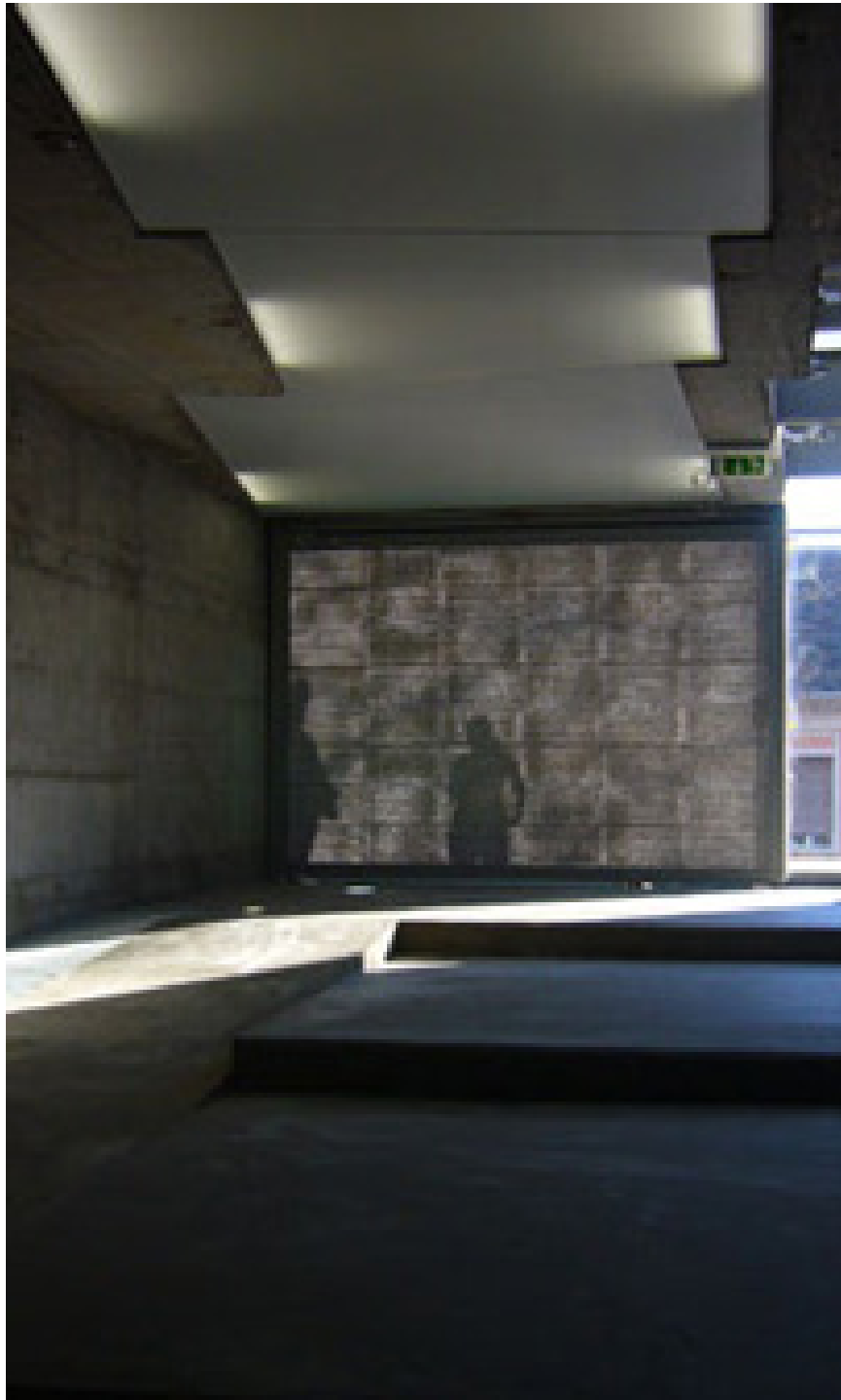


# Cella Septichora Visitor's Centre

case study  
By Larissa Sattler

Location: Káptalan Utca, Pécs, Hungary



**Architect:** Bachmann & Bachmann Architects

**Owner:** Pecs/Sopianae Orokseg Kozhasznu Tarsasag, Pecs, Hungary

**Year of completion:** 2015

**Climate:** Marine West Coast Climate

**Material of interest:** Light Transmitting Concrete by Litracon

**Application:** Exterior Door

**Properties of material:** The light transmitting concrete made by Litracon is composed of optical fibre (glass) and concrete, which is then either given a polished or brushed finish as prefabricated building blocks. This allows light to transmit through the material creating an interesting play with shadows and levels of opacity throughout the building. This material could be used to filter natural light into the building while maintaining privacy.

**Sources:**

Manufacturer Website: <http://www.litracon.hu/en>

<https://www.dezeen.com/2008/01/20/litracon-light-transmitting-concrete/>