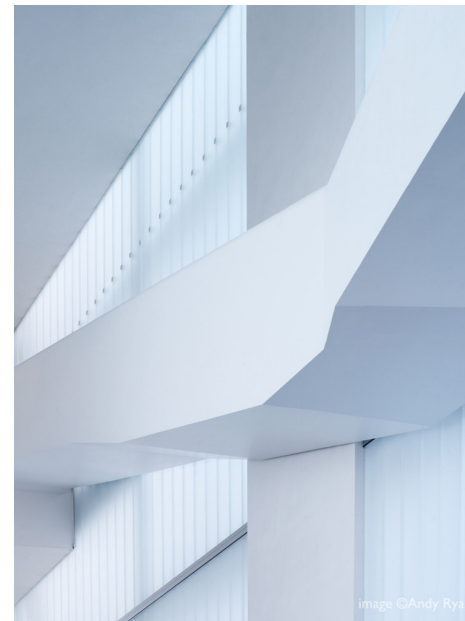
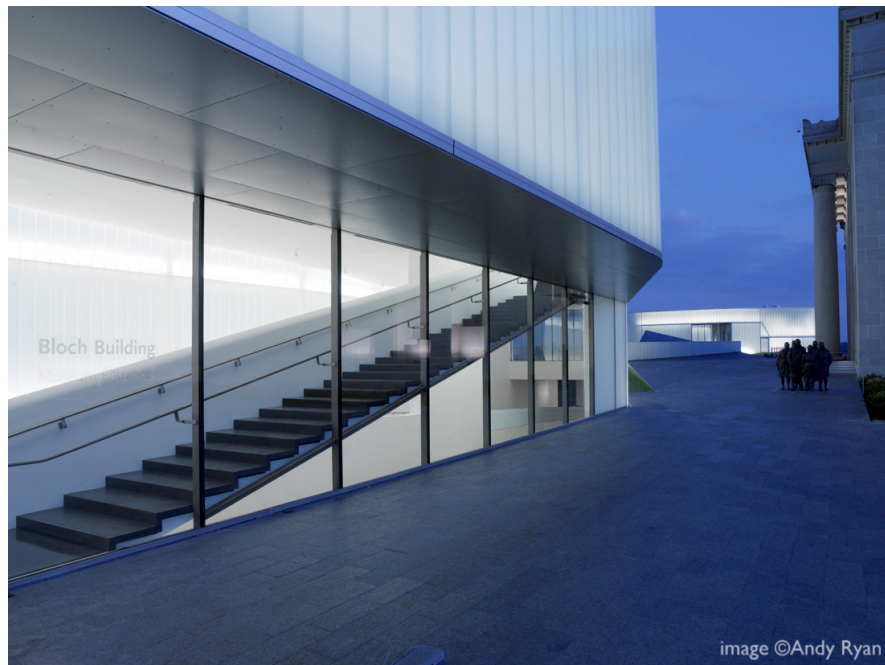


The Nelson-Atkins Museum of Art

case study
By Yu Yan

Location: Kansas City, MO, USA



Architect: Steven Holl

Owner: Bendheim, Tremco

Year of completion: 2007

Climate: Dfa

Material of interest: Glass

Application: Facades

Properties of material: The threaded movement between the light-gathering lenses of the new addition weaves the new building with the landscape in a fluid dynamism based on a sensitive relationship to its context.

Sources:

<https://www.archdaily.com/4369/the-nelson-atkins-museum-of-art-steven-holl-architects>