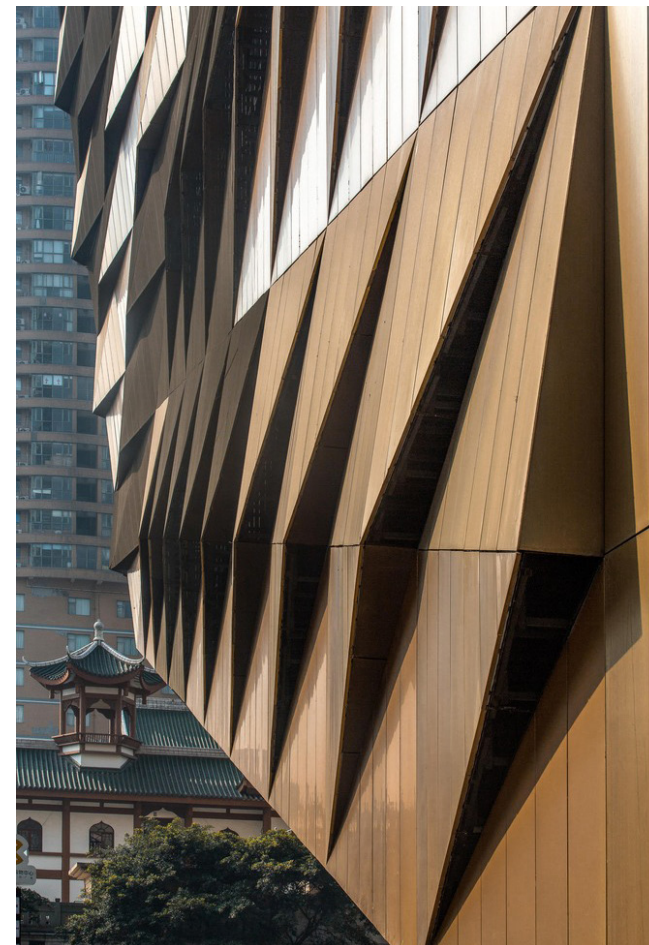


# Chengdu Museum

case study  
By Shijing Zhu

Location: Chengdu, Sichuan, China



**Architect:** Sutherland Hussey Harris

**Owner:** N/A

**Year of completion:** 2016

**Climate:** Monsoon-influenced humid subtropical climate

**Material of interest:** Copper

**Application:** Exterior

**Properties of material:** The long narrow site is exploited using all the public areas to maximise a dramatic relationship with the new square, the remaining façades consequently enclose the largely hermetic exhibition halls, these are represented as a giant crafted artefact in the city cloaked in a precious skin of copper alloy rigorously profiled to play with light, shade and texture whilst accommodating all the technical requirements for ventilation grilles. Aside from the east face this skin is 'lifted' to reveal glazing at street level, allowing a more human scaled intimacy and a relationship to the interior

**Sources:**

<https://www.archdaily.com/799912/chengdu-museum-sutherland-hussey-harris>