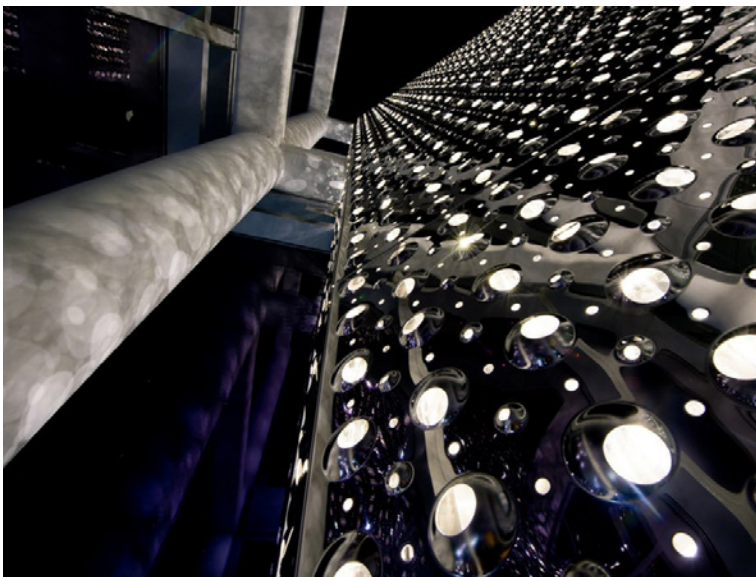
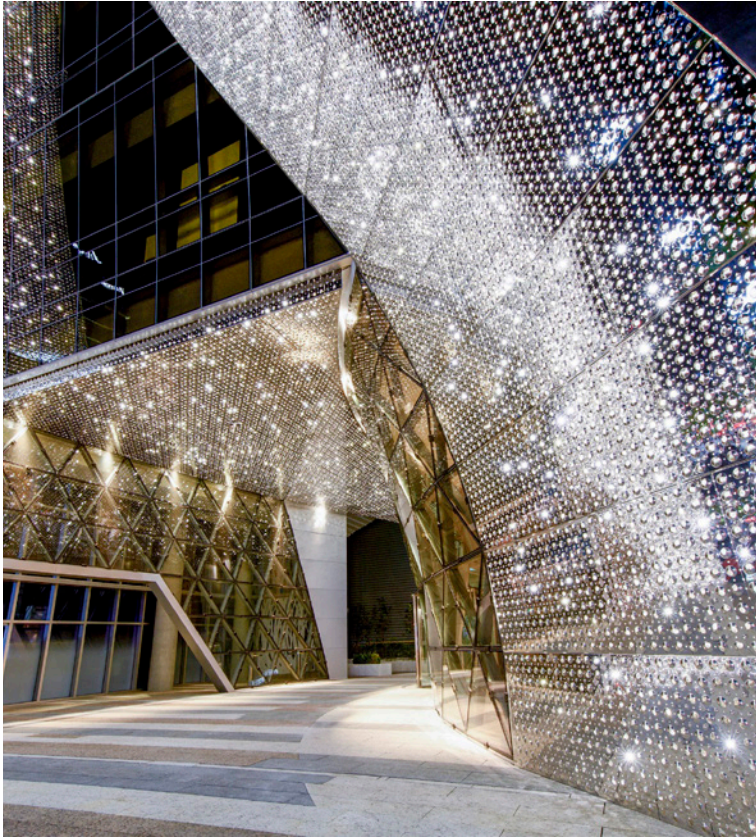


Harim Group Headquarters Building

case study
By Hua Yinghua

Seoul, South Korea



Architect: The Beck Group

Owner: Harim Group company

Year of completion: 2016

Climate: Humid continental climate

Material of interest: Metal

Application: exterior&interior

Properties of material: The building features a Zahner engineered cladding system and custom bumped and perforated stainless steel throughout the interior and exterior. The metal system Zahner provided was developed with a deep recess cavity for the lighting system. Plus they're energy efficient.

Sources:

<https://www.archdaily.com/877264/harim-group-headquarters-building-the-beck-group>

<https://www.azahner.com/works/harim-tower>