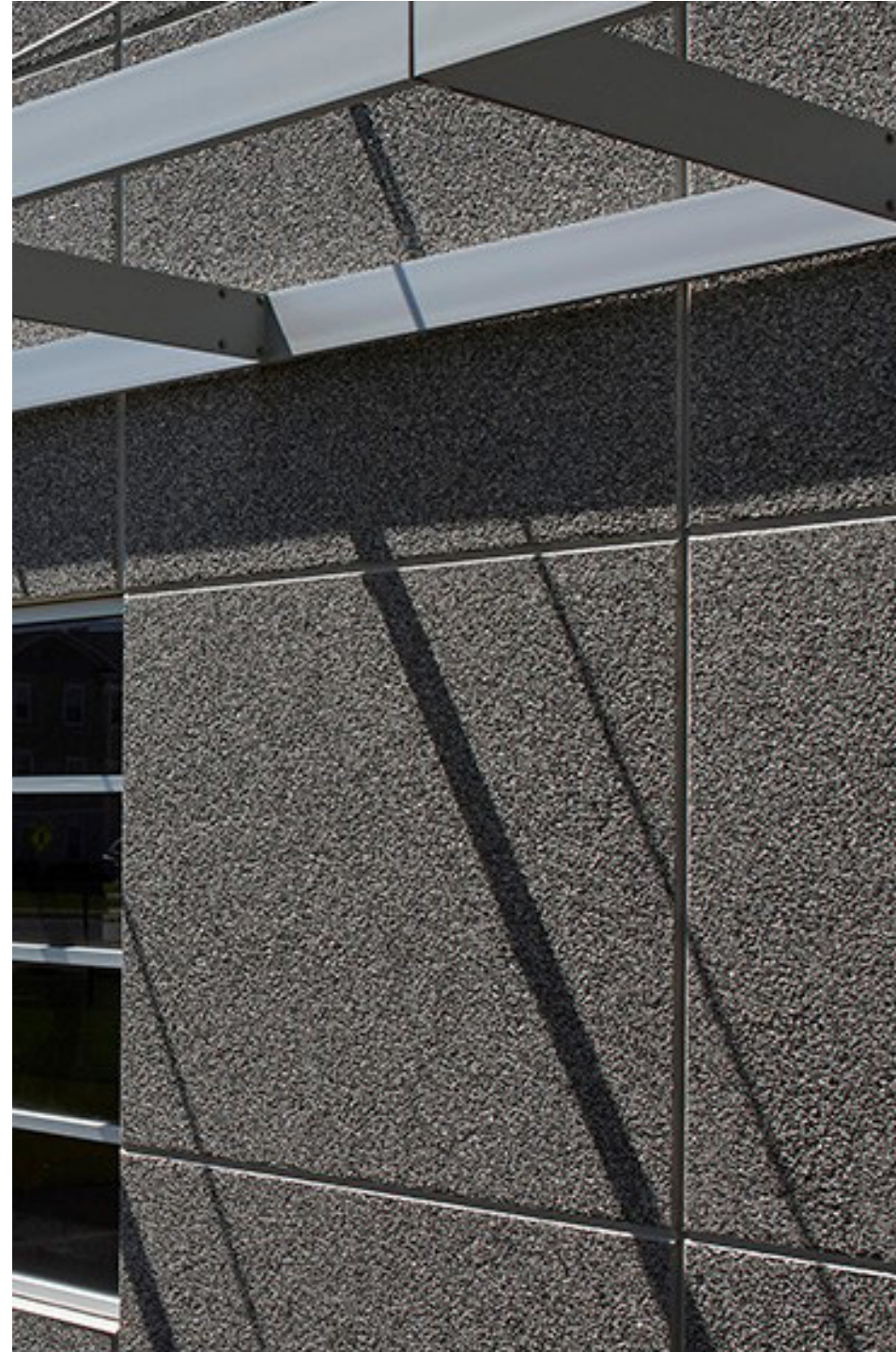


Banaadir Academy

case study
By Hua Yinghua

Minneapolis, MN



Architect: Krech O'Brien Mueller & Associates

Owner: Banaadir Academy

Year of completion: 2017

Climate: Hot Summer Continental Climate

Material of interest: Concrete

Application: exterior

Properties of material: Available in a wide variety of colors, textures, and finishes, insulated wall panels are ideal for any building project that needs stable protection and versatile functionality. Insulated Architectural Wall Panels are popular for schools, data centers, offices, warehouses, and storm shelters.

Sources:

<https://www.molin.com/project/banaadir-academy/>
<http://komainc.com/banaadir-academy-builds-addition-2/>