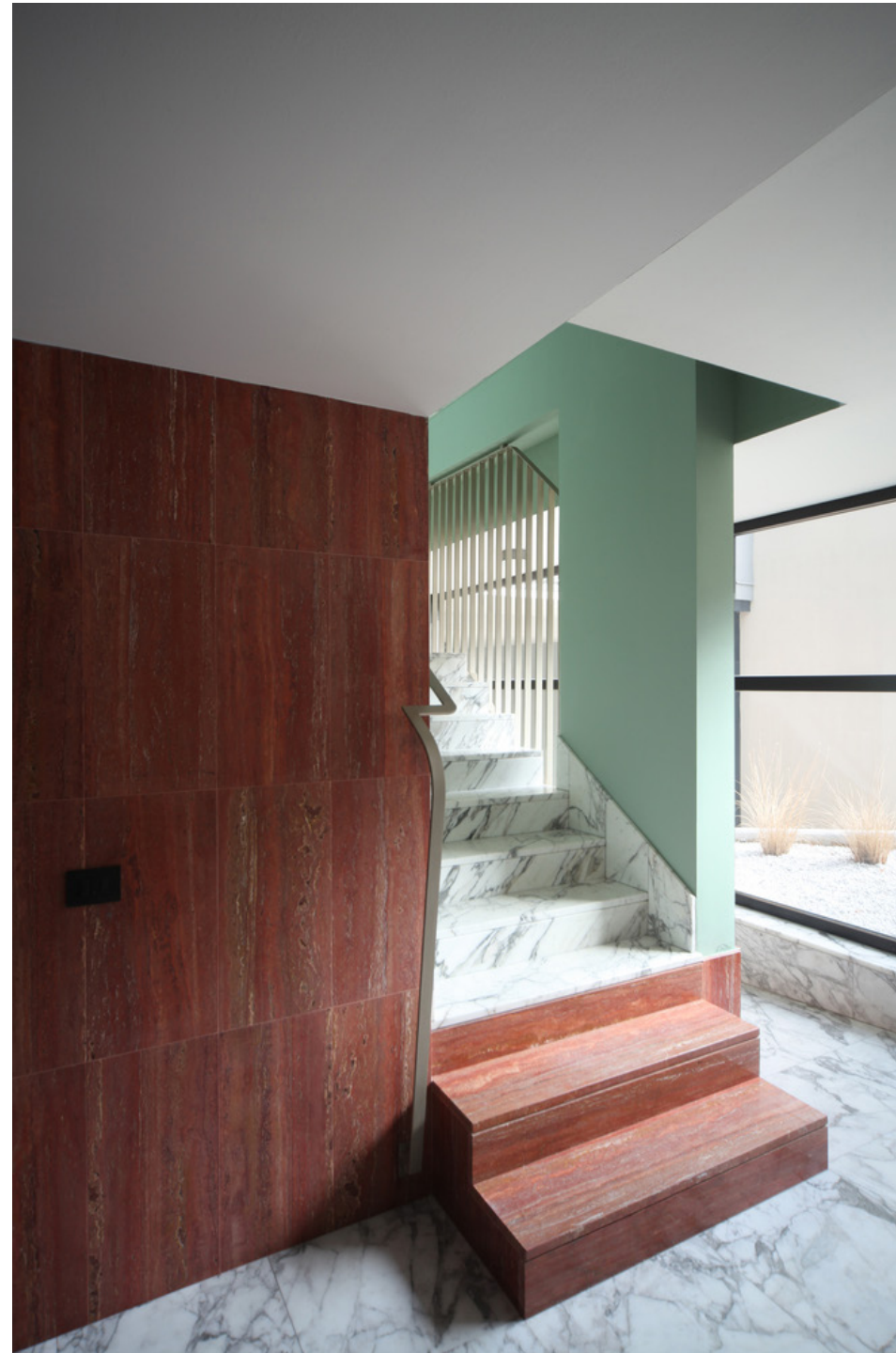


Casa Valdieri

case study
By Sheng Yan

Location: Turin, Italy



Architect: Uda

Owner: N/A

Year of completion: 2016

Climate: Humid Subtropical Climate (Koppen Climate Classification: Cfa)

Material of interest: Arabesque Marble

Application: Covered Exterior Cladding

Properties of material: Intended as extension of the shared interior to the public, Arabesque marbles cladding of red and white were used to extenuate the ground and announce processions of entry.

Sources:

Architect Website: www.uda.it

Web Magazine: divisare.com/projects/348981-marcantestavaltercamagna-carolaripamonti-urban-decor

Photographer:

Carola Ripamonti