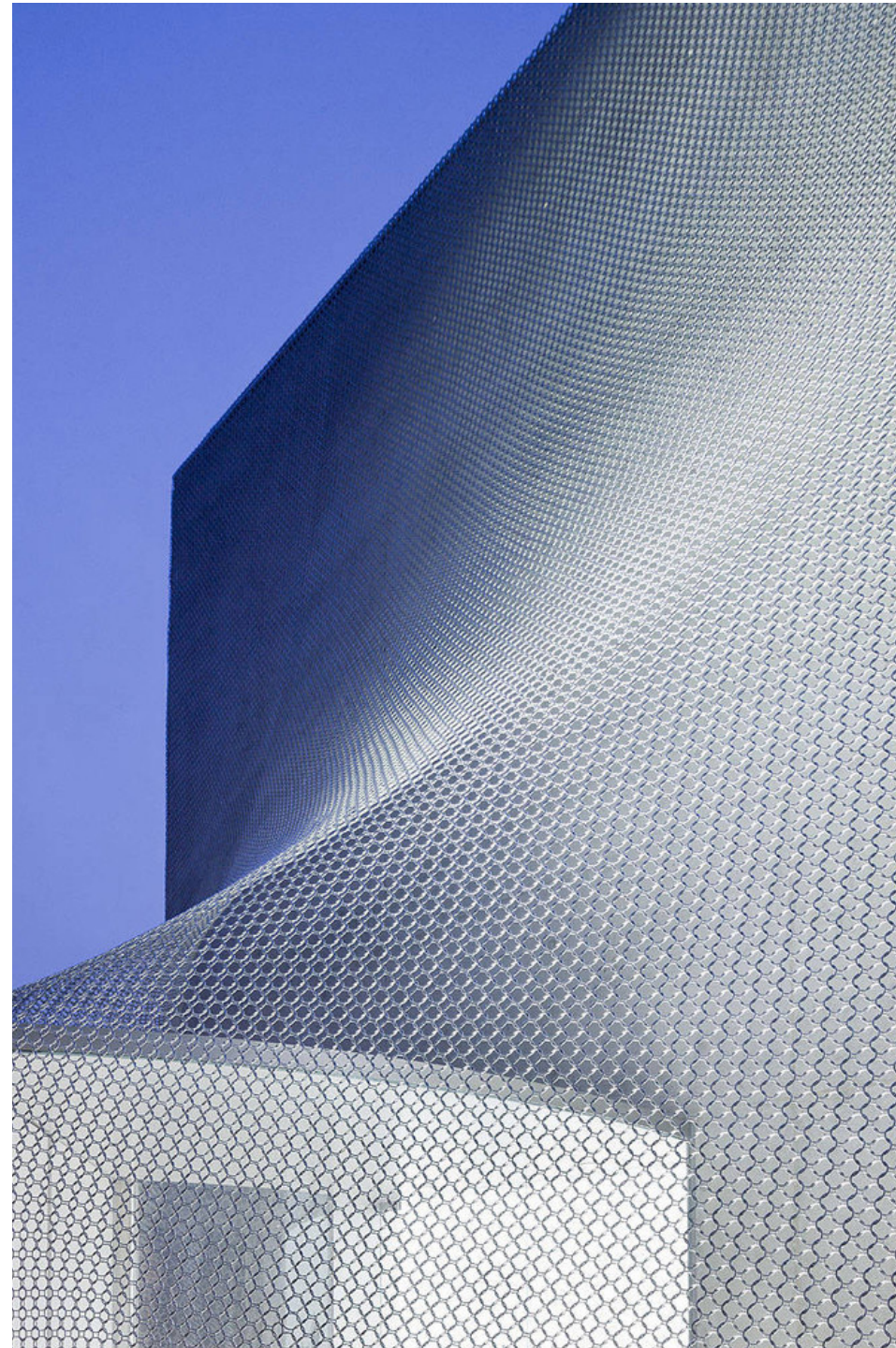


Kukje Gallery

case study
By Ali Ward

Location: Seoul, South Korea



Architect: SO-IL

Owner: Kukje Gallery

Year of completion: 2012

Climate: Koppen Climate Dwa/Cwa

Material of interest: Pliable Chainmail

Application: Exterior

Properties of material: The material is used as an extra layer that drapes over the façade. It gives off a fluid appearance, dissolving the appearance of the sharp edges of the actual building.

Sources:

<http://www.archdaily.com/237697/kukje-gallery-so-il/5001277b28ba0d2c9f000c49-kukje-gallery-so-il-photo>

<http://www.archdaily.com/237697/kukje-gallery-so-il/500127b228ba0d2c9f000c57-kukje-gallery-so-il-photo>

<http://www.archdaily.com/237697/kukje-gallery-so-il/5001278628ba0d2c9f000c4c-kukje-gallery-so-il-photo>