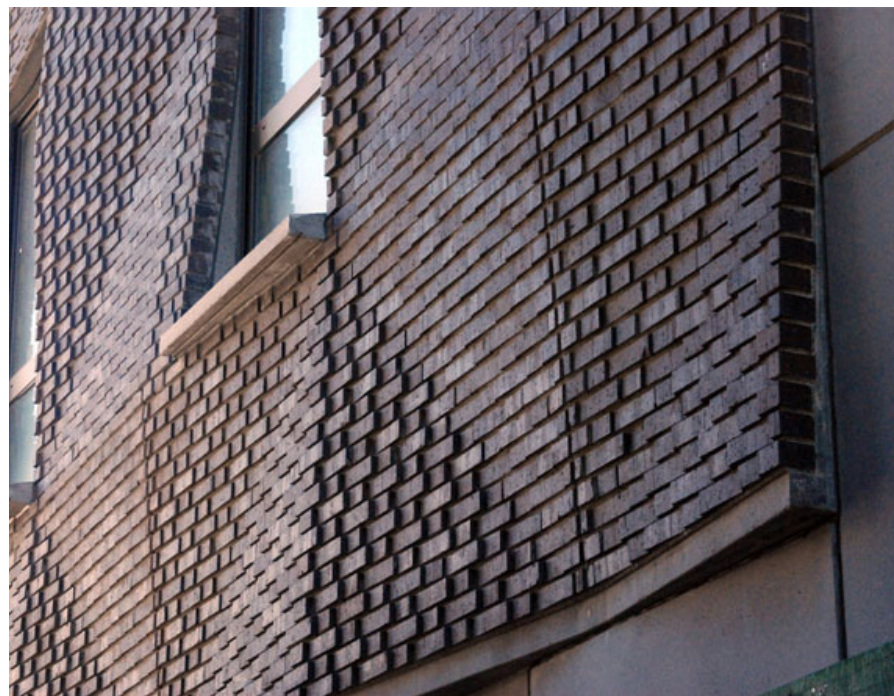


# 290 Mulberry

case study  
By Elia Magari

Location: New York City, New York



**Architect:** SHoP Architects

**Owner:** Cardinal Real Estate Investments

**Year of completion:** 2009

**Climate:** Warm Summer Continental

**Material of interest:** brick

**Application:** exterior façade

**Properties of material:** The rippled brick facade treatment acknowledges the fact that the brick is panelized, not load bearing, and at the same time pays tribute to the highly articulated historic brick facades in the neighborhood.

**Sources:** <http://www.archdaily.com/9028/in-progress-290-mulberry-shop-architects>