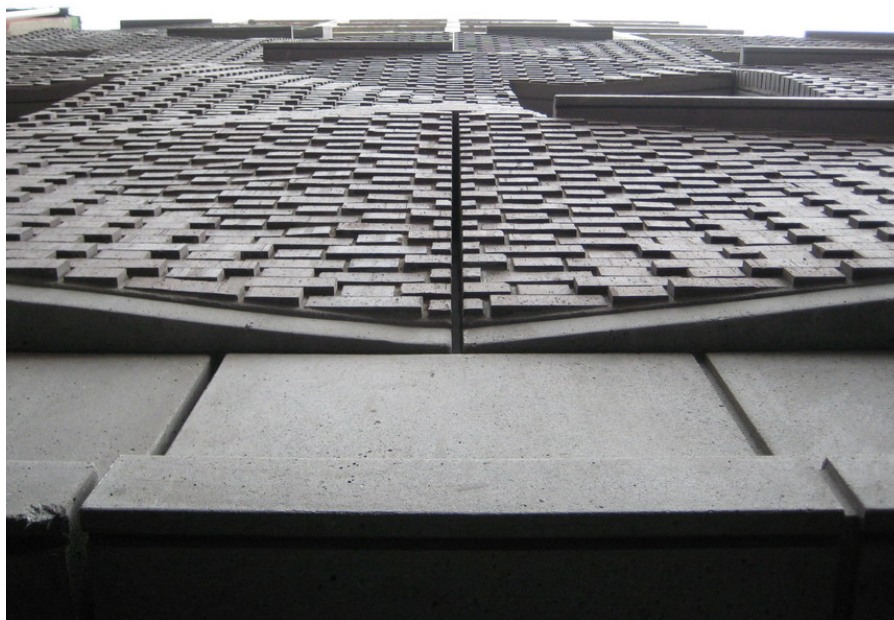


# 290 Mulberry

case study  
By Gaosi Wang

Location: New York City, NY



**Architect:** SHoP Architects, PC

**Owner:** Cardinal Investments

**Year of completion:** 2009

**Climate:** Humid Subtropical Climate

**Material of interest:** Exterior Bricks

**Application:** Exterior

**Properties of material:** A zoning district requirement specifying a masonry enclosure for the two street walls created an opportunity to respond directly to the Puck Building, one of New York's most recognizable masonry buildings. We then focused the idea on the reinterpretation of local laws and regulations with a contemporary response to masonry construction and detailing that doesn't attempt to imitate the past.

**Sources:**

Architect Website: <http://www.shoparc.com/>  
<http://www.archdaily.com/9028/in-progress-290-mulberry-shop-architects/>