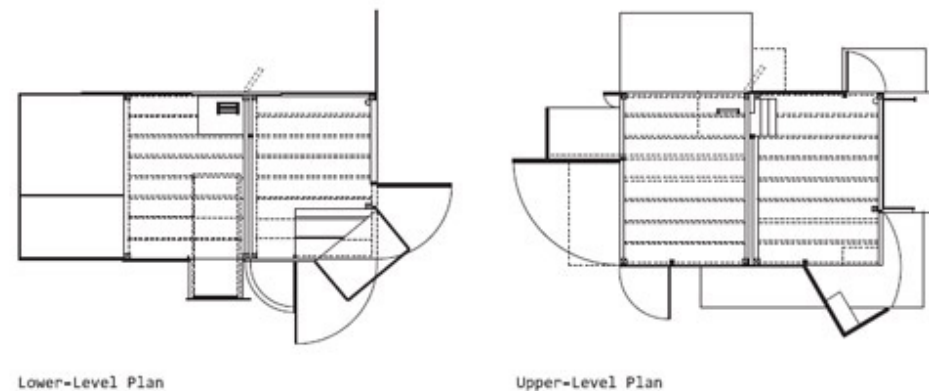
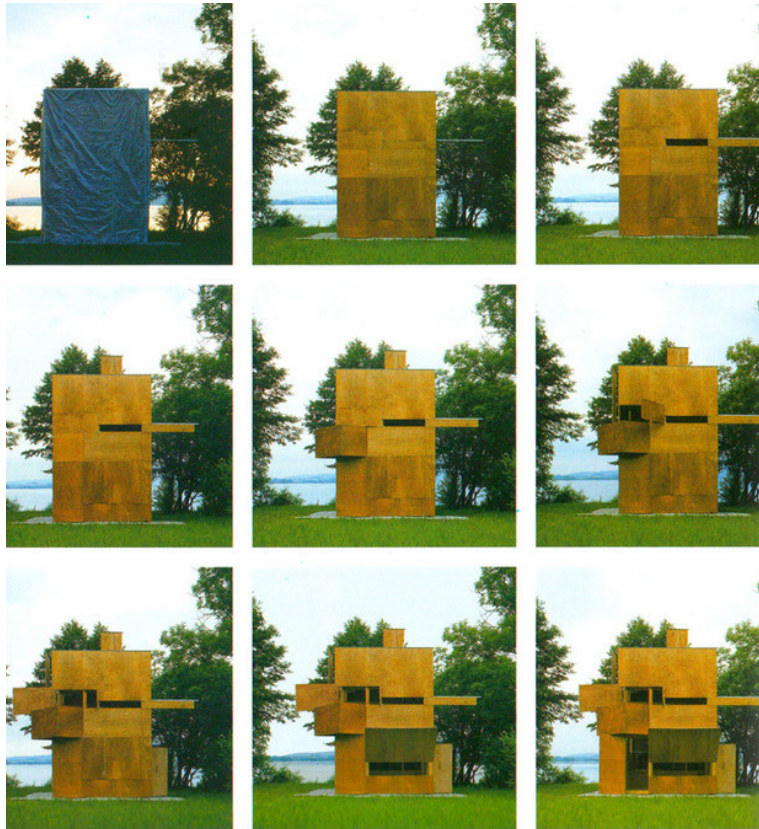


Gucklhupf

case study
By Jina Kim

Location: Mondsee, Austria



Architect: Hans Peter Wörndl

Owner: Built for Mondsee's summer festival

Year of completion: 1993

Climate: Marine West Coast Climate

Material of interest: Wood

Application: Exterior facade, Interior structure

Properties of material: A skeleton of studs and beams constitutes the bearing framework onto which the outer fiber-board cladding is applied. Retractable panels at different height transform the space and enhance the relationship between interior and exterior.

Sources:

<http://architectuul.com/architecture/gucklhupf>