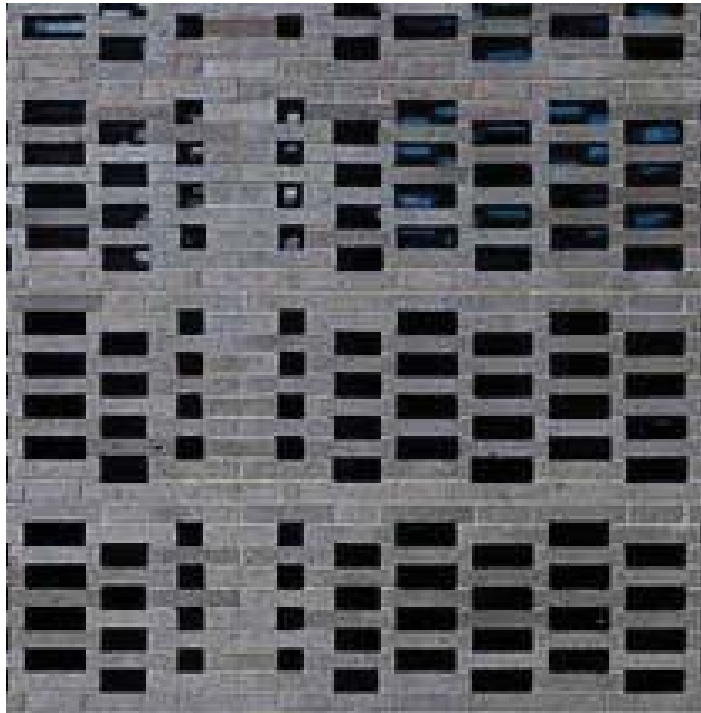


Brick Weave House

case study
By Alison Andrews

Location: Chicago, Illinois, USA



Architect: Studio Gang Architects

Owner: Private Owner

Year of completion: 2008

Climate: Humid Continental

Material of interest: Brick Masonry

Application: Exterior Screen

Properties of material: Reused brick from the previous building is used to create a screen on the front facade. Bricks were removed from the original wall to open up holes for air and light to reach the interior spaces.

Sources:

Architect Website: www.karo-architekten.de

