

Washington University in St. Louis  
**Washington University Open Scholarship**

---

Women in the Design World: Work in Progress

Sam Fox School of Design and Visual Arts

---

9-7-2014

Allison Méndez / M.Arch, 2012

Sam Fox School of Design and Visual Arts

Follow this and additional works at: [https://openscholarship.wustl.edu/wia\\_profiles](https://openscholarship.wustl.edu/wia_profiles)

---

**Recommended Citation**

Sam Fox School of Design and Visual Arts, "Allison Méndez / M.Arch, 2012" (2014). *Women in the Design World: Work in Progress*. 37.  
[https://openscholarship.wustl.edu/wia\\_profiles/37](https://openscholarship.wustl.edu/wia_profiles/37)

This Book is brought to you for free and open access by the Sam Fox School of Design and Visual Arts at Washington University Open Scholarship. It has been accepted for inclusion in Women in the Design World: Work in Progress by an authorized administrator of Washington University Open Scholarship. For more information, please contact [digital@wumail.wustl.edu](mailto:digital@wumail.wustl.edu).

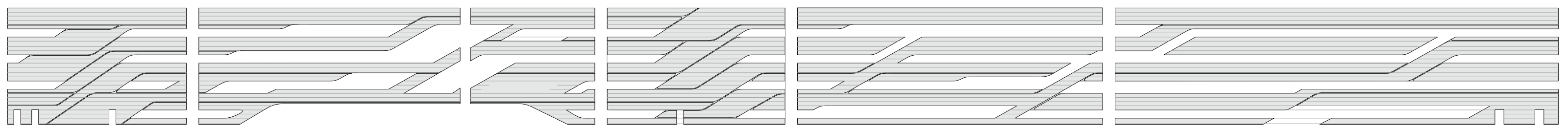
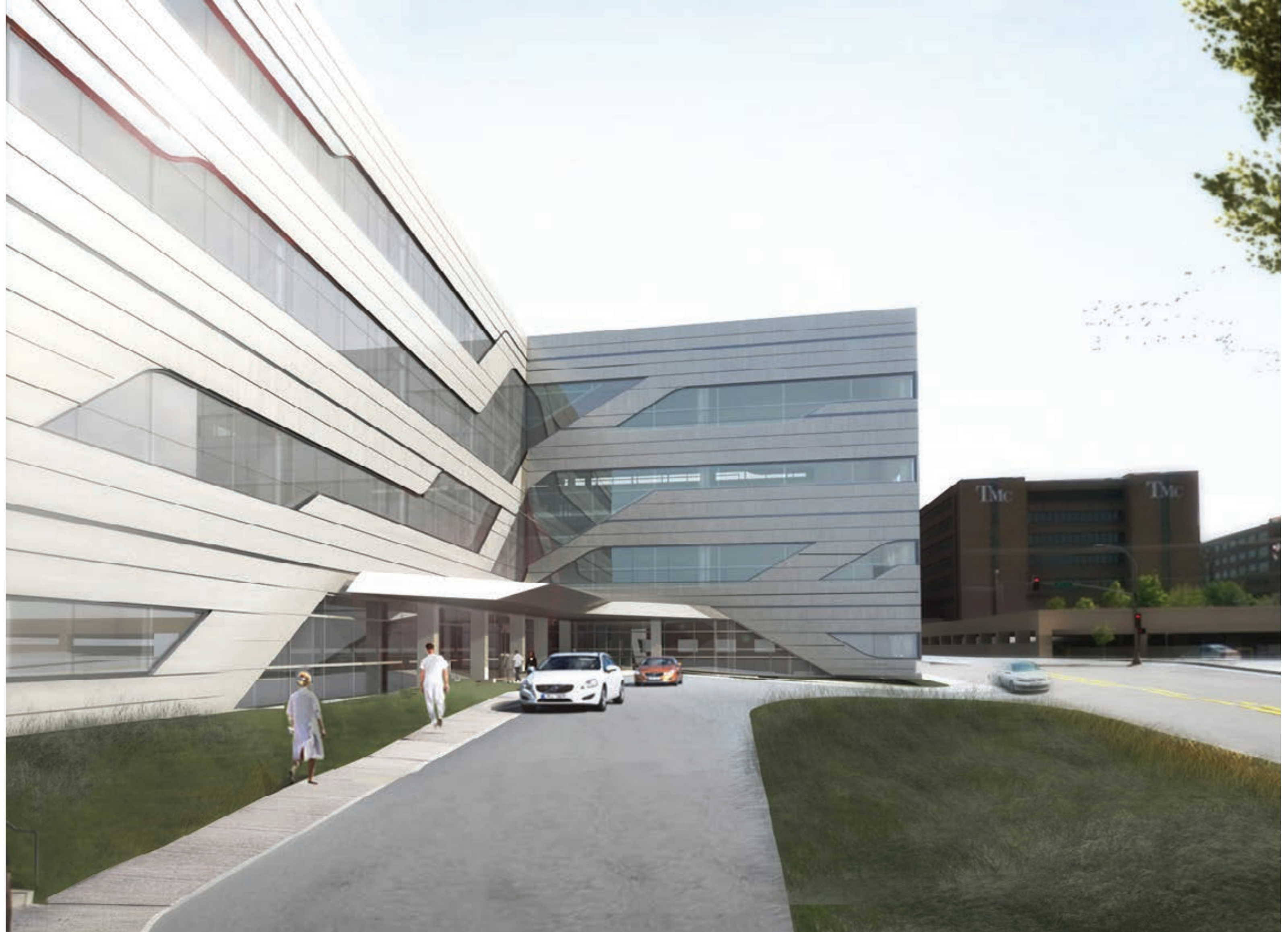
TITLE OF WORK | TRUMAN MEDICAL OFFICE BUILDING  
LOCATION | KANSAS CITY, MISSOURI  
ROLE | PROJECT DESIGNER  
DATE OF PROJECT | 2014 (UNDER CONSTRUCTION)

The project is a medical office building and ambulatory surgery center for Truman Medical Center (partnered with Landmark Healthcare Facilities) in Kansas City, MO.

On a prominent hilltop site overlooking downtown Kansas City, and as a new "front-door" for the hospital complex, the design had to be visually compelling while maintaining flexible and economical planning strategies. The challenge was to add visual interest to a building that for planning, budget, and environmental reasons necessitated a straight-forward ribbon window design.

Since we were designing a medical office building, we sought inspiration from medical research spatial mappings and reinterpreted/abstracted these patterns as a way to design a unique ribbon window. We strategically allowed the windows to move across the facade, connect to one another, or grow vertically to provide more light and views in public spaces.

The patterning concept gave us a design language to employ in the drop-off canopy and lobby, creating a cohesive building.



Alumnae Biography

**BIOGRAPHY (100 WORDS)**

Allison Méndez is a designer at CannonDesign St. Louis. She has an M.Arch from Washington University in St. Louis and a B.S. in Design from Arizona State University. At Washington University, she received the William Tao Prize for demonstrated excellence in the understanding/application of building systems in architecture.

She spent much of her academic career exploring ways to address agricultural and water management issues with infrastructural design. She continues to be engaged in this research. Her design philosophy is that exceptional design results from problem-solving that reaches beyond and results in interconnectedness, with parts perceptibly becoming a whole.

**AWARDS**

Sole recipient of AIA St. Louis Honor Award in Drawing Category (2014) for "Impending Storm on REBARRier Island". AIA St. Louis Honor Award in Unbuilt Category (2013) with Team Finn for "Archipelago" William Tao Prize recipient (2012) at Washington University in St. Louis

**PUBLICATIONS**

Collaborative work featured in: Association of Collegiate Schools of Architecture, 2013, "Blighty Mighty," 'scape, landscape & urbanism, 2012, "Gutter To Gulf" review, 'Lijn in Landschap' Foundation in collaboration with Birkhäuser.