

Washington University in St. Louis
Washington University Open Scholarship

Women in the Design World: Work in Progress

Sam Fox School of Design and Visual Arts

9-7-2014

Lisa Kincaid, Associate AIA / BA 1990 / M.Arch
1992

Sam Fox School of Design and Visual Arts

Follow this and additional works at: https://openscholarship.wustl.edu/wia_profiles

Recommended Citation

Sam Fox School of Design and Visual Arts, "Lisa Kincaid, Associate AIA / BA 1990 / M.Arch 1992" (2014). *Women in the Design World: Work in Progress*. 23.

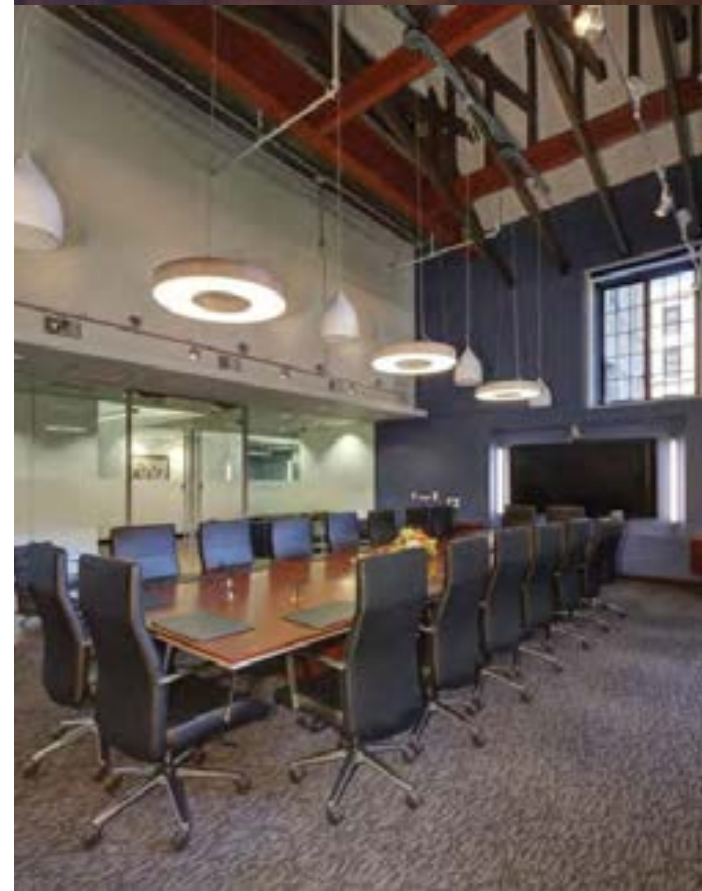
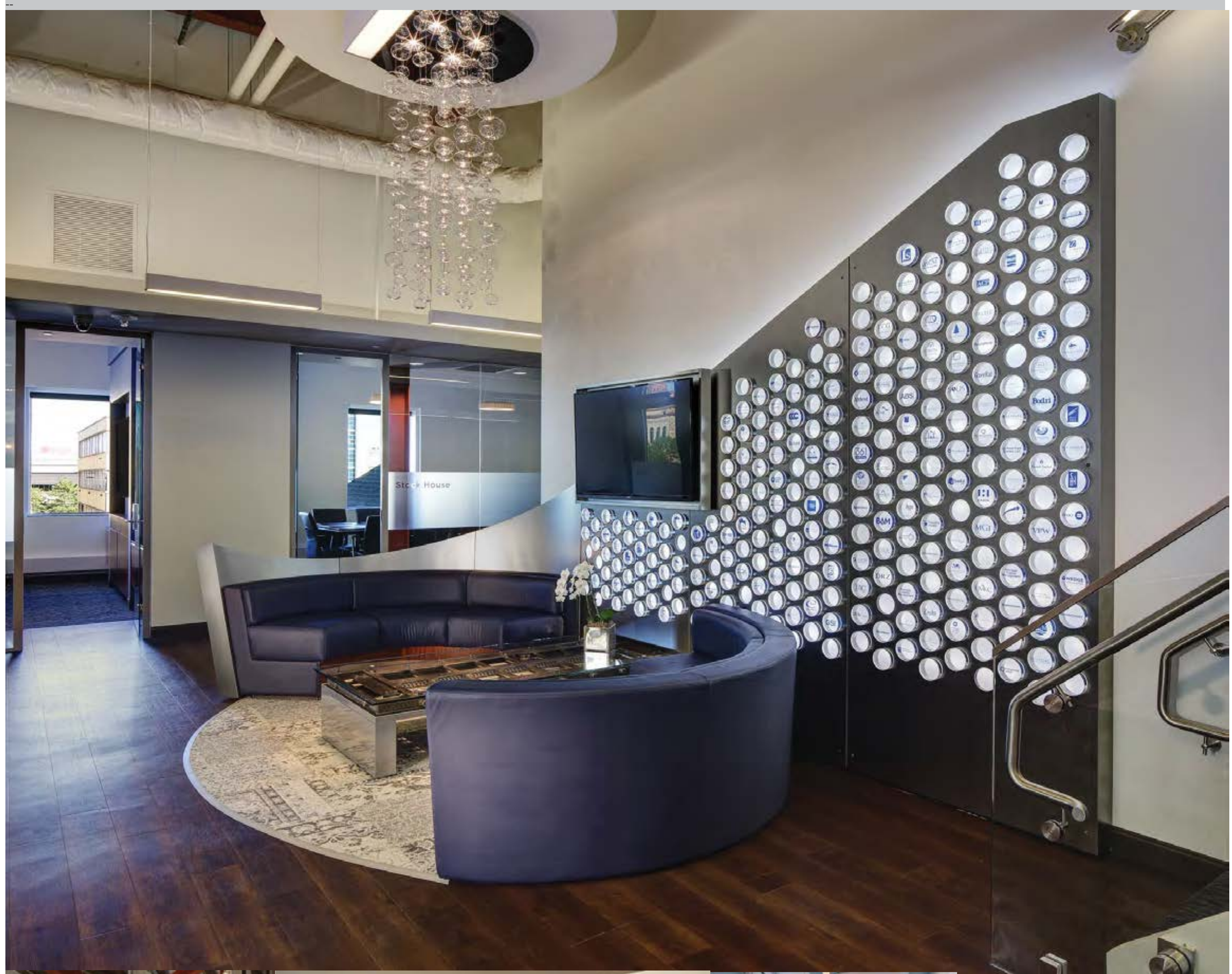
https://openscholarship.wustl.edu/wia_profiles/23

This Book is brought to you for free and open access by the Sam Fox School of Design and Visual Arts at Washington University Open Scholarship. It has been accepted for inclusion in Women in the Design World: Work in Progress by an authorized administrator of Washington University Open Scholarship. For more information, please contact digital@wumail.wustl.edu.

UMB Fund Services
Design Principal
June 2014

In expressing the spirit of UMB Fund Services, we are inspired by the many arches present at the existing Stockhouse Building and on the Schlitz Park campus in Milwaukee. From the front entrance to the curving vaults of the brick and wood structure within, the elegance of the arch is found throughout. We believe it is appropriate to honor the best built traditions of our past. We also believe that the arch can serve as one representation of the integrity of UMB Fund Services: as a trusted client resource and as the kind of responsive employer that makes UMB Fund Services a "Best Place to Work!" In our design, the timeless form of the historic arch finds a home in a revitalized and contemporary setting. From our artistic renderings to the completed project, you will see a respectful nod to the historic past with a keen eye on looking forward to the future in our design. The enormous success of this project is thanks to all of the hard work, long long long hours, and incredible dedication of my team for two years.

90,000 RSF | \$7,000,000



Alumnae Biography

B I O G R A P H Y
My love for design has been a life long passion. As long as I'm sketching and designing something, I am happy! After moving to Chicago from my hometown of St Louis, I landed at GWH+Kincaid Malone in 2003, was made partner and shareholder in 2007 and named Principal in 2011. My experience leading design teams over the years

has resulted in building solid foundations in the design community for continuing business relationships as well as award winning design projects. I have directed architectural interiors projects ranging from 5,000 RSF to over 100,000 RSF, keeping close communications with clients, teammates, and general contractors ensuring well-built, on-time and on-budget projects.

A W A R D S
AIA-St Louis Awards for Excellence in Interior Design: Citation Award for 9-one-6 and Merit Award Pablo's Martini Bar
Landmark Society of St Louis Award for Pablo's Martini Bar
Best of Souland Award for Design and Detailing of a private Souland Residence