


6-2-2015

Engineering a New Home: Creating a Repository Collection for Faculty

Emily Symonds Stenberg
Washington University in St Louis

Lauren Todd
Washington University in St Louis

Follow this and additional works at: https://openscholarship.wustl.edu/lib_present

 Part of the [Cataloging and Metadata Commons](#), [Scholarly Communication Commons](#), and the [Scholarly Publishing Commons](#)

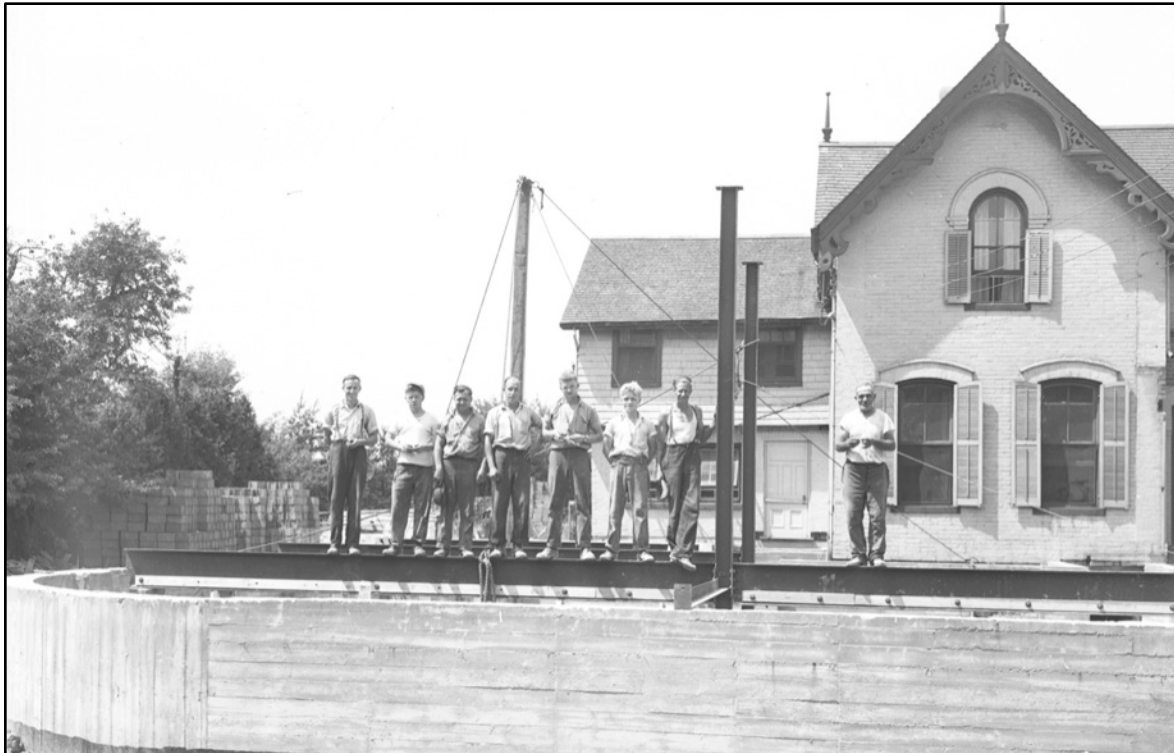
Recommended Citation

Stenberg, Emily Symonds and Todd, Lauren, "Engineering a New Home: Creating a Repository Collection for Faculty" (2015). *University Libraries Presentations*. 18.
https://openscholarship.wustl.edu/lib_present/18

This Presentation is brought to you for free and open access by the University Libraries at Washington University Open Scholarship. It has been accepted for inclusion in University Libraries Presentations by an authorized administrator of Washington University Open Scholarship. For more information, please contact digital@wumail.wustl.edu.

Engineering a New Home

Creating a Repository Collection for Faculty



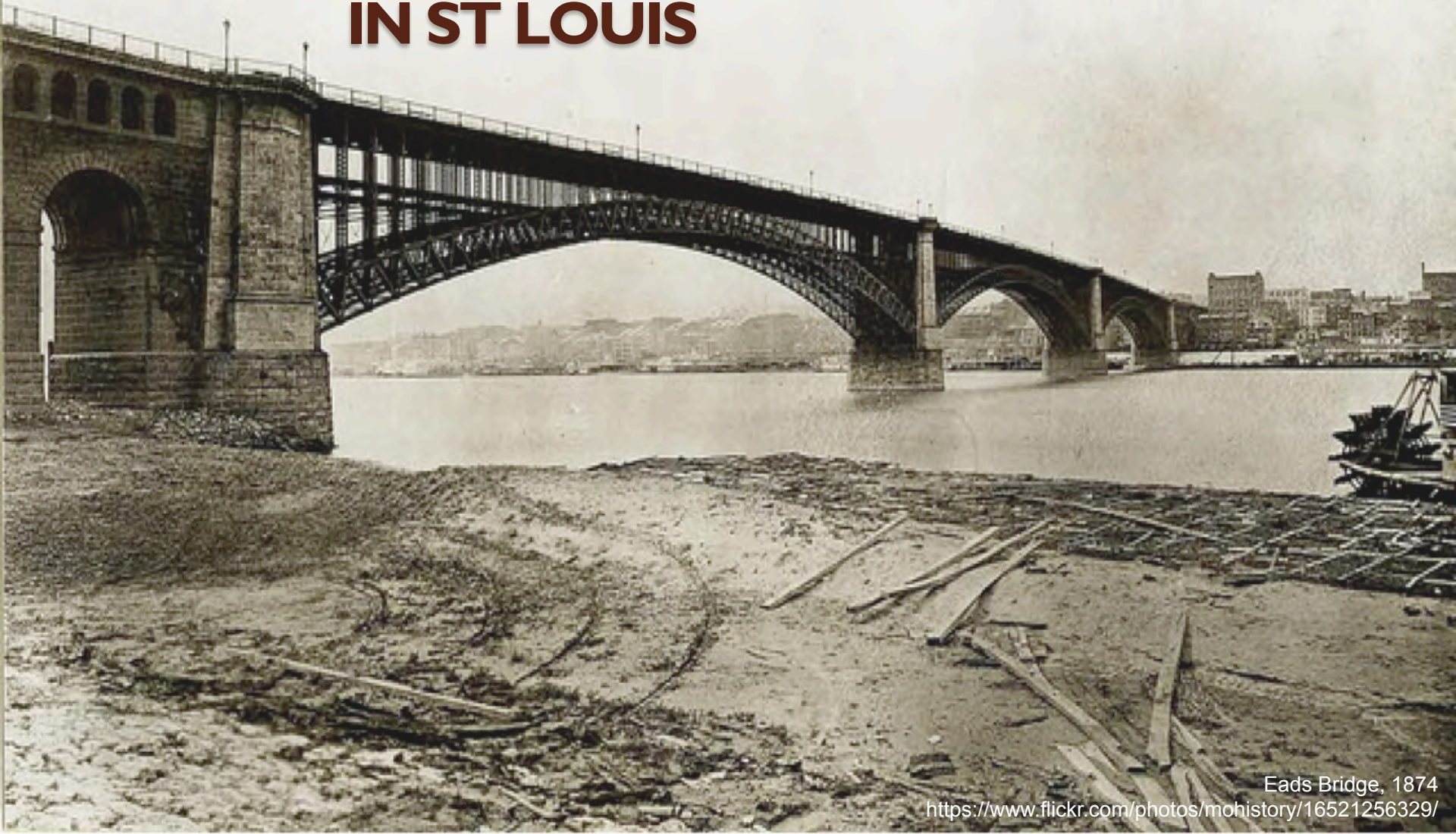
EMILY STENBERG ■ DIGITAL PUBLISHING & PRESERVATION LIBRARIAN

LAUREN TODD ■ ENGINEERING SUBJECT LIBRARIAN

WASHINGTON UNIVERSITY IN ST. LOUIS

Spruce Villa, 1948, CC BY-NC-ND 2.0
<https://www.flickr.com/photos/whitbyarchives/2382796841>

HISTORY OF OPEN SCHOLARSHIP AT WASHINGTON UNIVERSITY IN ST LOUIS



Eads Bridge, 1874

<https://www.flickr.com/photos/mohistory/16521256329/>



Highlights in Open Scholarship

- 2011 – Faculty Senate adopts Open Access Resolution
- 2012 – Open Scholarship (Digital Commons) initiated by University Libraries
- April 2013 – Digital Publishing & Preservation Librarian begins
- April 2014 – First conversation about CSE
- July 2014 – Two runs of undergraduate research journals added
- November 2014 – Open Scholarship and Law Library repositories merge



Enter search terms:

Search

in this repository

[Advanced Search](#)

[Notify me via email or RSS](#)

Links

[Medical School Repository](#)
[Law School Repository](#)
[Digital Gateway](#)
[Scholarly Communications](#)

Browse

[Collections](#)
[Disciplines](#)
[Authors](#)

Author Corner

[Author FAQ](#)
[Submit Research](#)

Browse Research & Scholarship [Follow](#)

- Academic department, school, or college
- Books, monographs, and catalogs
- Conferences and symposia
- Data and data sets
- Electronic theses and dissertations
- Faculty scholarship
- Journals and peer-reviewed series
- Student scholarship



The Open Scholarship repository is a service of the Washington University in St. Louis libraries to provide free access to the scholarly output of the university. See the About and FAQ pages for links to details on mission, content and contributing.



[View Larger](#) →

At a Glance

Top 10 Downloads

All time

Recent Additions

20 most recent additions

Paper of the Day

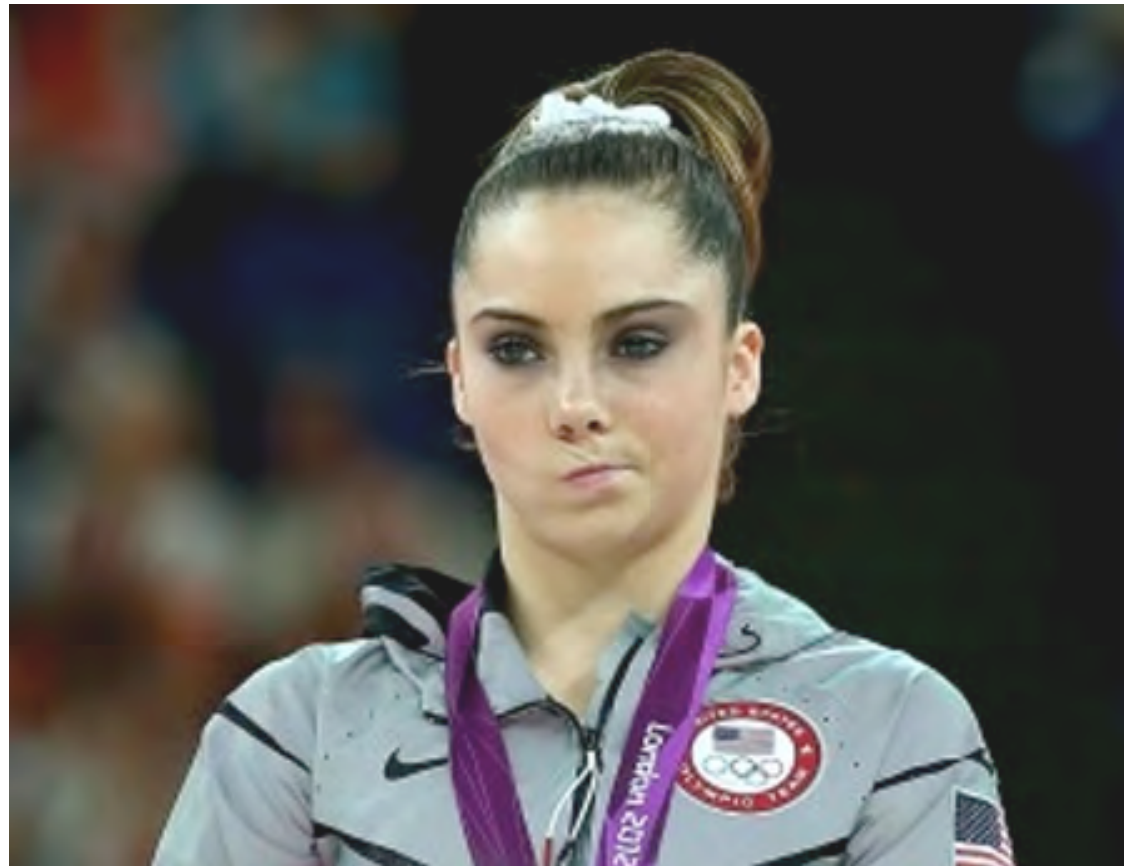
**Differentiation of Writing and Drawing in
Preschool Children**
Shoko Otake

openscholarship.wustl.edu

Emily's Expectations



The Reality



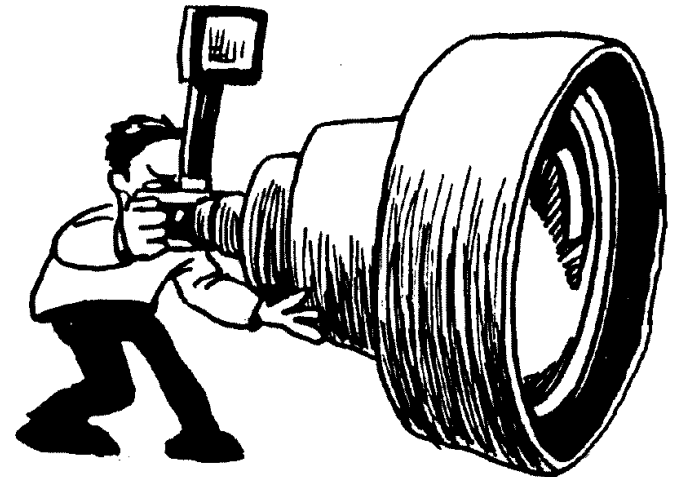
The Reality

- Majority of materials in Open Scholarship were ETDs
- Faculty articles from 4 departments: Social Work, Psychology¹, Biology, and Mathematics²
- Workshops in June/July 2014 for the library on adding faculty publications were well attended but little impact...

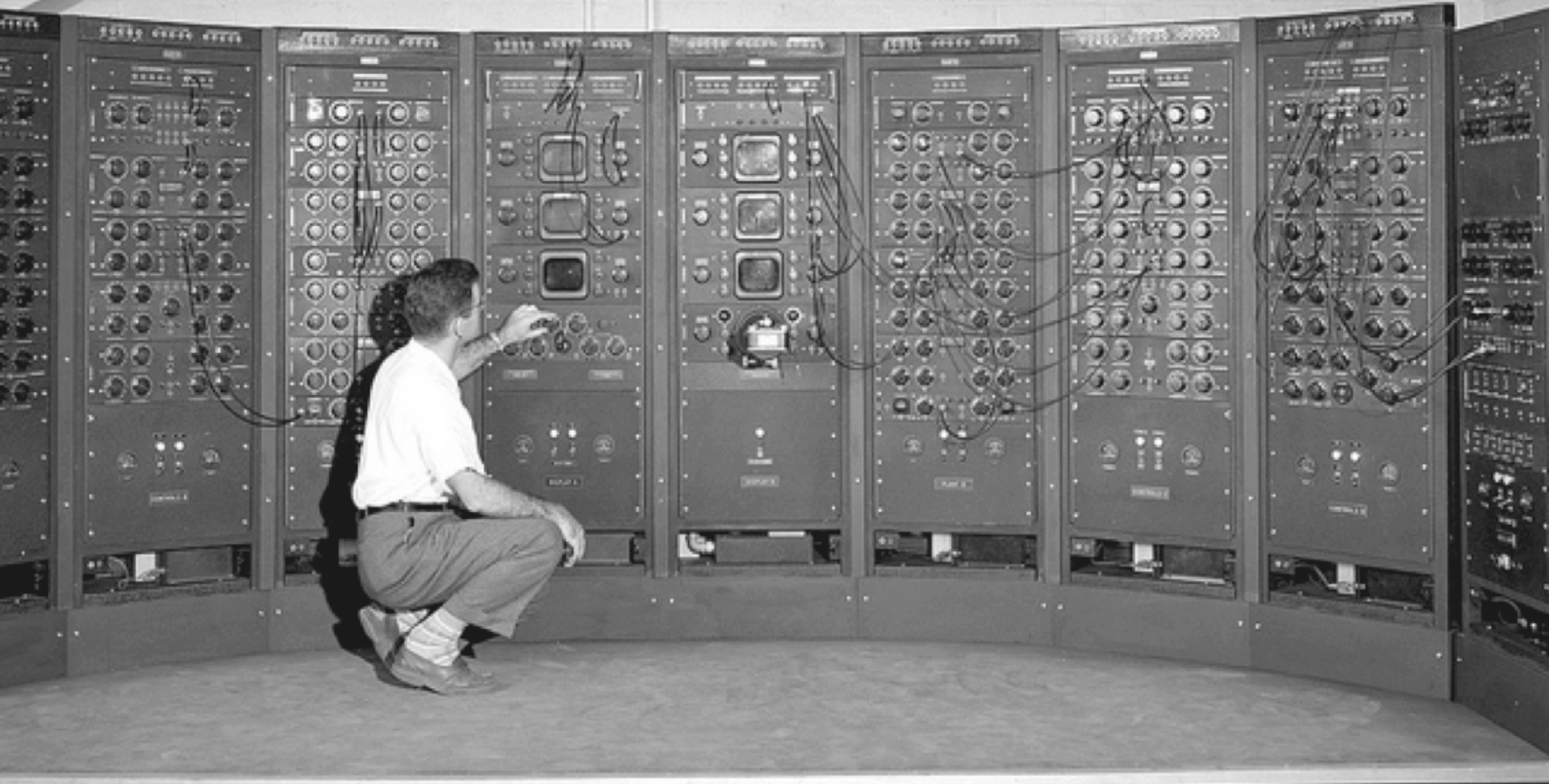
1. One article from 2011
2. Same subject librarian for these two departments

Snapshot 2013

- Dec. 2013: 1,161 Items / 106,471 Downloads
 - Graduate ETDs = 974
 - Undergraduate Work = 67
 - Faculty Publications = 75
 - Other = 45



COMPUTER SCIENCE & ENGINEERING DEPARTMENT AND OPEN SCHOLARSHIP



Word of Mouth

“The Computer Science & Engineering department is looking for a repository tool for their publications, theses and dissertations. I am recommending to the department chair and project coordinator that they look into Open Scholarship to see if it might fit their needs.”



Lauren's Reaction



Q&A for CSE Tech Reports

- **Whose materials are being submitted?**
Faculty and students, both graduate and undergrad
- **What type of content is being submitted?**
Typically technical reports, theses and dissertations, with the possibility of adding pictures, videos, and other documents later. Journal and conference article reprints should be possible, depending on copyright laws.
- **Are these print-only or electronic materials?**
These would initially all be .pdf documents, with eventually the possible addition of graphics, video, and audio files as well as possibly archive files of software packages.

Q&A for CSE Tech Reports

- **What type of access do you want to provide? The standard is full, open access. Restriction options are generally available for previously unpublished works, such as ETDs**

This would be open access

- **What is your timeline for having the materials available in the repository? Is this a one-time or ongoing project?**

This is an ongoing project, and we would like everything to be available as soon as possible. Ideally, for unpublished technical reports, availability should be mostly immediate, e.g., as what is available from a repository such as arXiv. If there is the need to verify copyright compliance prior to posting a version of a published journal or conference article, a lag of no more than a week is desirable.

Open Scholarship = Perfect Match



The Players

Emily Stenberg

Lauren Todd

Librarians



"Library confusion, 23 12 1952, by Sam Hood (5748745311)" by State Library of New South Wales from Australia - Library confusion, 23/12/1952, by Sam HoodUploaded by PDTillman. Via Wikimedia Commons - [http://commons.wikimedia.org/wiki, File:Library_confusion,_23_12_1952,_by_Sam_Hood_\(5748745311\).jpg](http://commons.wikimedia.org/wiki/File:Library_confusion,_23_12_1952,_by_Sam_Hood_(5748745311).jpg)

The Players

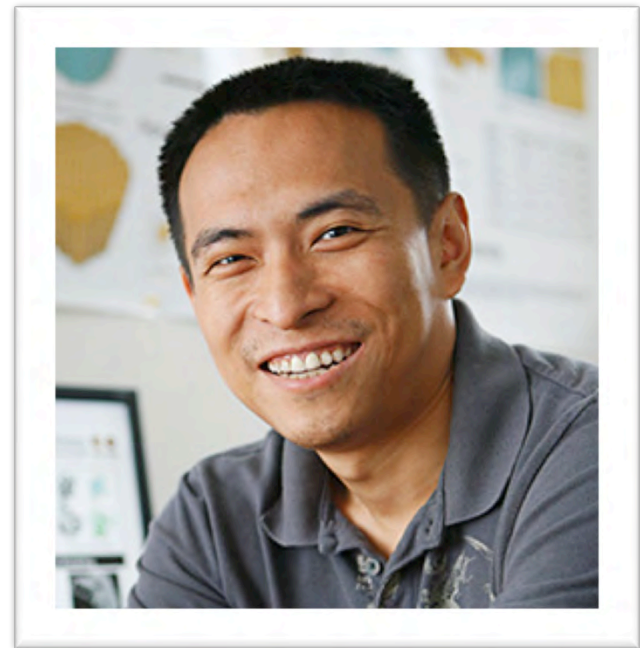
Roch Guerin

CSE Department Chair



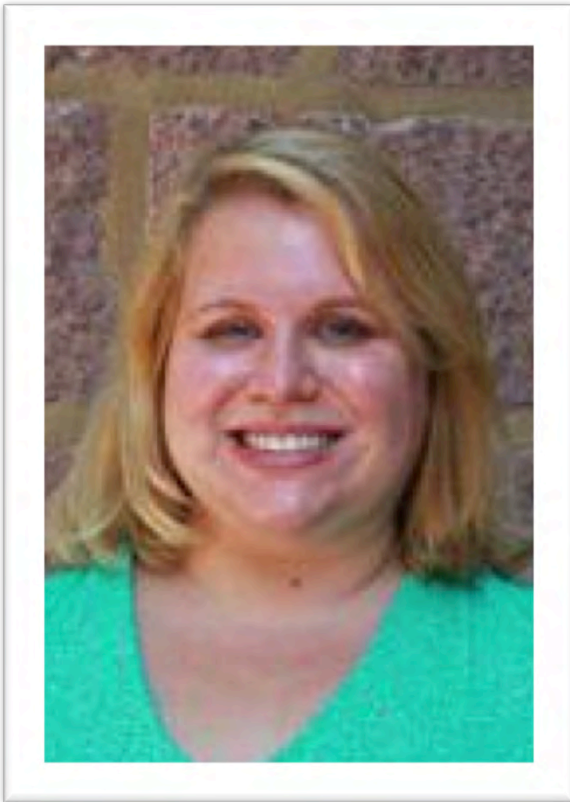
Tao Ju

CSE Professor



The Players

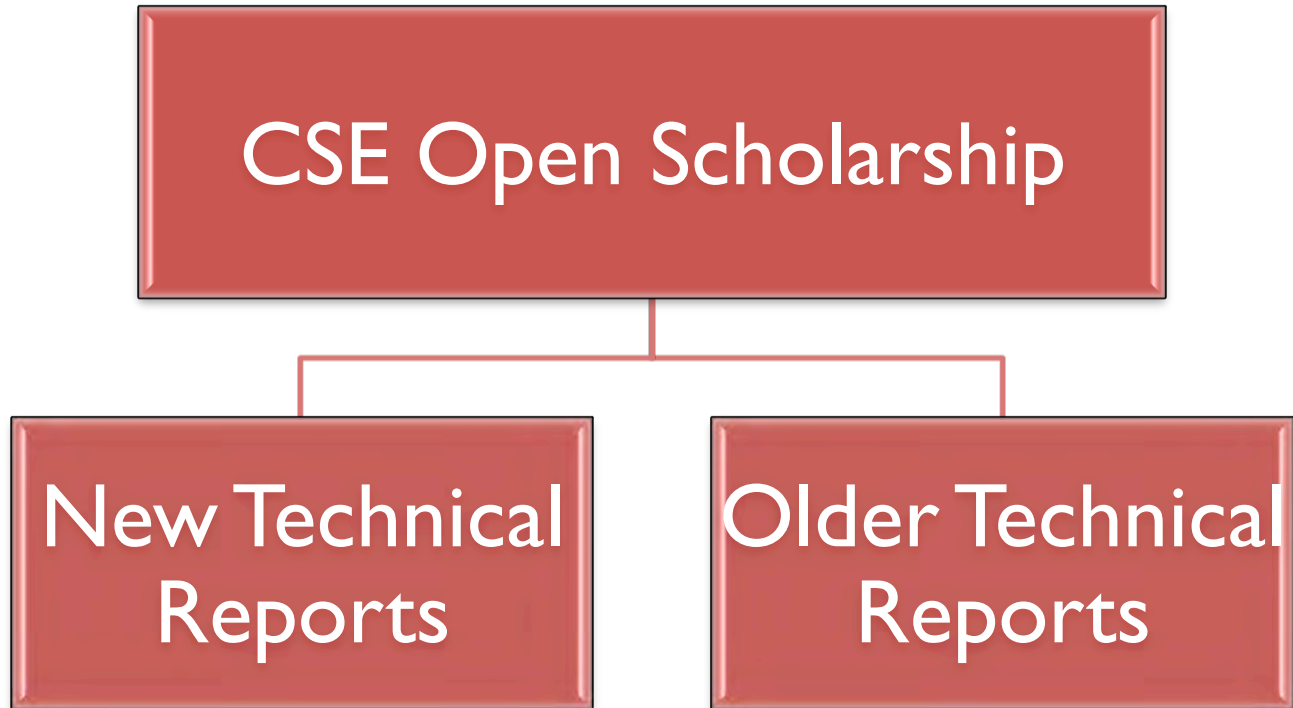
Lauren Huffman
CSE Project Manager



Student Worker X
Excel Coder

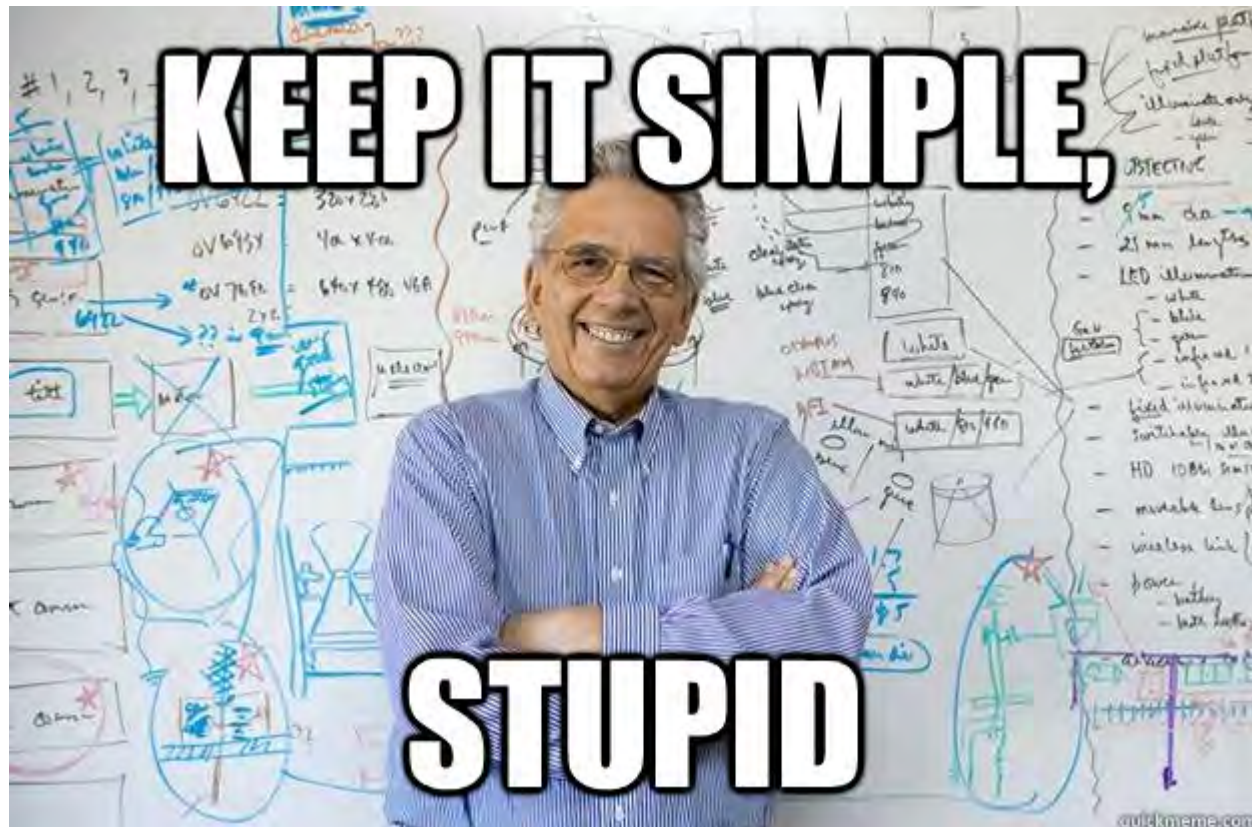


The Process



The Submission Form

- Standard OS
- CSE OS



REQUIRED **Disciplin**

Please indicate the acad
[here](#) to view the complet

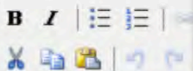
Available:

- Architecture
- Arts and Human
- Business
- Education
- Engineering
- Law
- Life Sciences
- Medicine and He
- Physical Scienc
- Social and Beha

Comments

Enter journal permission
affiliation, or other releva

Comments



DOI

Enter the publication's D

Recommended Citation

Digital Commons automatically generates recommended citations for all submissions.
To override the default suggested citation, please enter citation information below.

Enter recommended citation (optional)

REQUIRED **Upload File**

- Upload file from your computer
- Import file from remote site
- Link out to file on remote site

Publication Status

**Was this submission previously published in a journal? Bepress will automatically create an
OpenURL for published articles. [Learn more about OpenURLs](#)**

- Yes
- No

Notes to Administrator

Enter requests to the administrator, such as new department affiliations, here. This
information will not be publicly displayed.

Additional Files

Please check this if you'd like to add additional files

REQUIRED Upload File

- Upload file from your computer
- Import file from remote site
- Link out to file on remote site

Notes to Administrator

Enter requests to the administrator, such as new document types, here. This information will not be publicly displayed.

Additional Files

Please check this if you'd like to add additional files

This may take a while. **Please only click once.**

Comments

Include an Identifier number or any other relevant information. This information will be publicly displayed.

Submission Structure

- Submit to one Series/Collection : cse_research
- Set up filters to group materials by Document Type to sub-Collections

Browse the *Computer Science and Engineering* Collections:

[All Computer Science and Engineering Research](#)

[Conference and Workshop Papers](#)

[Conference Posters](#)

[Journal Articles](#)

[Reports](#)

Customization Requests



- Replicate the look of the old CSE site


2014

1. WUCSE-2014-50: **Global EDF Scheduling for Parallel Real-Time Tasks** [[Download PDF](#)]
Author(s): Jing Li
Date: 4/23/2014, Size: 1.0 MB, Type: application/pdf
Report Type: MS Thesis
[More Detail](#)

- Improve the Advanced Search function

- Able to display additional metadata fields on the “Series Index page”
- Copied on individual sub-collection pages

Research from 2014

 [PDF](#) [Exploring User-Provided Connectivity](#)

Mohammad H. Afrasiabi and Roch Guerin
Technical Report

Abstract:

Network services often exhibit positive and negative *externalities* that affect users' adoption decisions. One such service is "user-provided connectivity" or UPC. The service offers an alternative to traditional infrastructure-based communication services by allowing users to share their "home base" connectivity with other users, thereby increasing their access to connectivity. More users mean more connectivity alternatives, *i.e.*, a positive externality, but also greater odds of having to share one's own connectivity, *i.e.*, a negative externality. The tug of war between positive and negative externalities together with the fact that they often... [Read More](#)


 [PDF](#) [Data Transport System](#)


Rahav Dor
MS Project Report

Abstract:

To facilitate the WU Smart Home research [21] we built a system that collects data from

- Search function is through Digital Commons
- + Can't customize at Series (collection) level
 - = “Feature requests” to Customer Support

Advanced Search 



Date range:

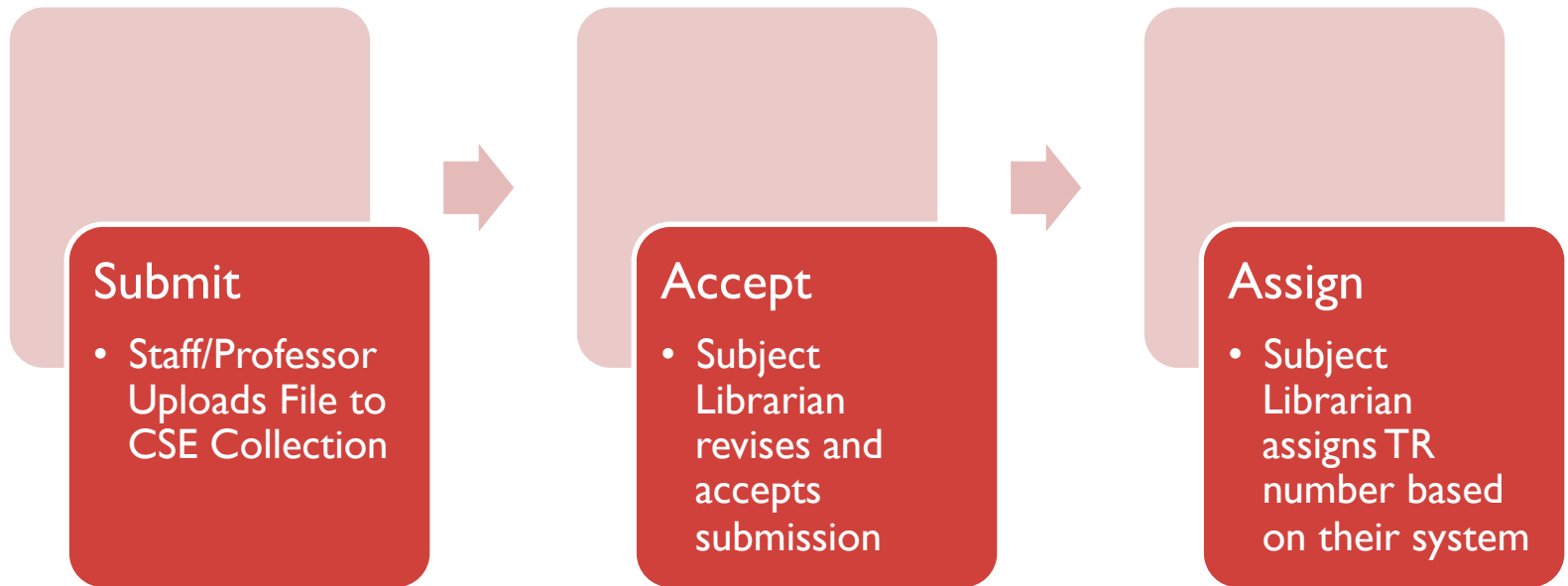
Limit search to:

Sort by: Relevance Publication Date

Format:

[Basic](#)

The Launch



The Collection Page(s)

<http://openscholarship.wustl.edu/cse/>

COMPUTER SCIENCE AND ENGINEERING

Department Chair: Roch Gu erin

The Department of Computer Science & Engineering trains future educators, researchers and engineers through an intensely personal engagement in a set of research activities that span the development of fundamental knowledge about computational processes, the design of new computing systems and methods, and the creation of novel applications that benefit society at large. The emphasis on interdisciplinary research facilitates engagement with departments across the University and promotes novel uses of information technology across a wide range of disciplines. This collection will contain technical reports, scholarly articles, conference and workshop papers, and conference posters created within the Computer Science & Engineering department.

Follow

Browse the *Computer Science and Engineering* Collections:

[All Computer Science and Engineering Research](#)

[Conference and Workshop Papers](#)

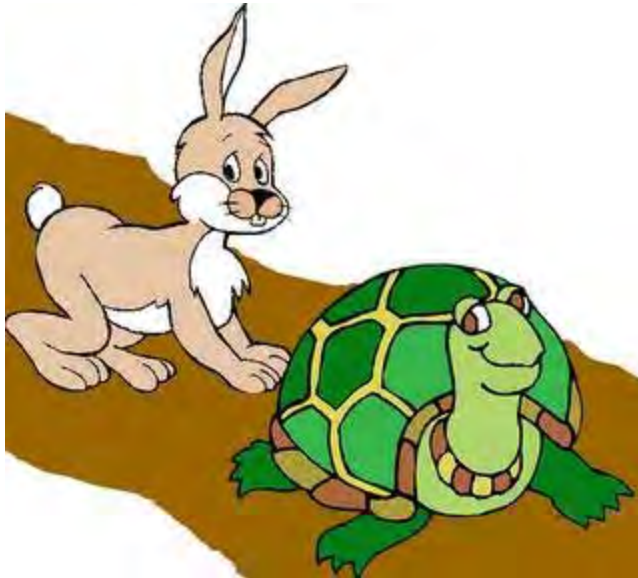
[Conference Posters](#)

[Journal Articles](#)

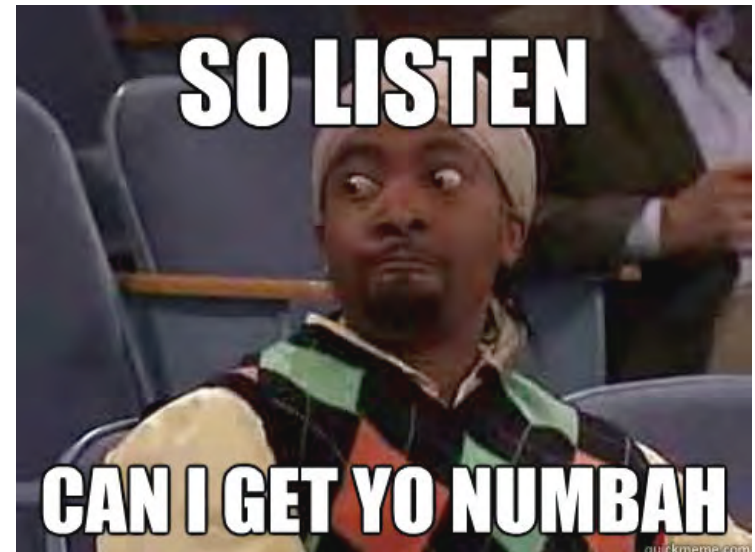
[Reports](#)

The Tweaks

- Too Fast, Too Slow?



- Report Numbers



Batch Uploading Old Reports

Student Worker Codes in Excel Spreadsheet



CSE Project Manager shares files in Google Docs



Run Script.



Subject Librarian uploads to BePress



Success!

What is this Google Batch thing?



OR



- Workflow using Google Drive, a “getURLS App script,” and Excel for easier batch upload
- See engagedscholarship.csuohio.edu/msl_facpub/105/ (Cleveland State University, 2014)

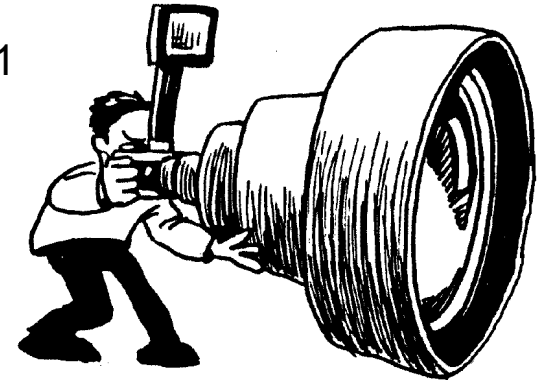
By the Numbers

- 235 Technical Reports from 2009 to present
- 242 items total in CSE
- 2673 Downloads
- 221 downloads for a report from 2012



Snapshot 2014

- Dec. 2014: 4,836 Items / 259,879 Downloads
 - Graduate ETDs = 1,254
 - Undergraduate Work = 2,707¹
 - Faculty Publications = 375²
 - Other = 500

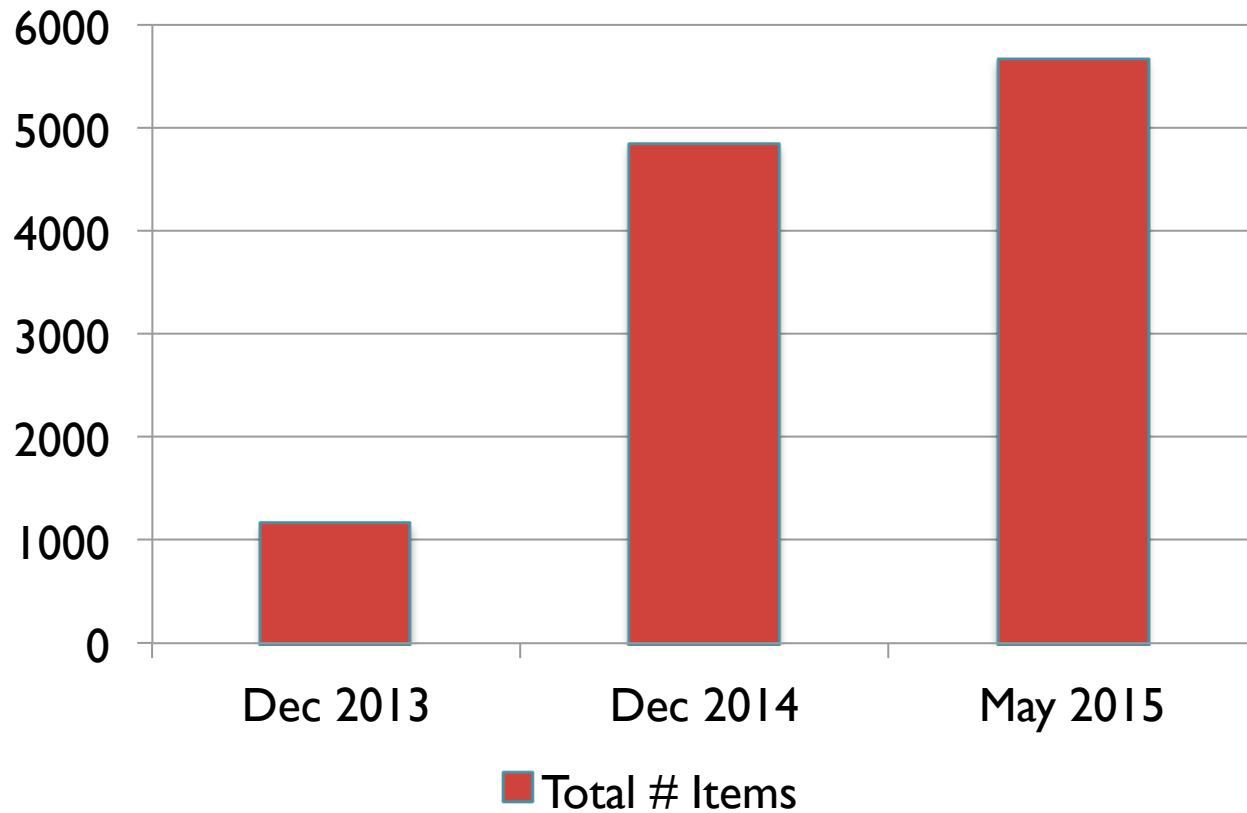


- Dec. 2014 (with Law Content): 13,025 Items / 1,228,504 Downloads

1. 2606 individual pages from 21 undergraduate journals
2. 242 from CSE project

Then and Now

Open Scholarship Content



More with Engineering!

- Completing transfer of Tech Reports 2006-2008
- Establishing other engineering collections
 - Mechanical Engineering Design
 - Technical Writing
 - Retrospective Chemical Engineering ETDs
- Assigning DOIs to Technical Reports



Lessons for the Libraries

- If you preach it, they will come.
- Work with the converted.
- It takes a village.
- Replicate success.
- Apply workflow to other collections



**Questions?
Comments?
Concerns?**

Thank you!

emily.stenberg@wustl.edu

lauren.todd@wustl.edu