

Washington University in St. Louis
Washington University Open Scholarship

Women in the Design World: Work in Progress

Sam Fox School of Design and Visual Arts

9-7-2014

Beth A. Niemi, B.A. Architecture, 1982

Sam Fox School of Design and Visual Arts

Follow this and additional works at: https://openscholarship.wustl.edu/wia_profiles

Recommended Citation

Sam Fox School of Design and Visual Arts, "Beth A. Niemi, B.A. Architecture, 1982" (2014). *Women in the Design World: Work in Progress*. 17.

https://openscholarship.wustl.edu/wia_profiles/17

This Book is brought to you for free and open access by the Sam Fox School of Design and Visual Arts at Washington University Open Scholarship. It has been accepted for inclusion in Women in the Design World: Work in Progress by an authorized administrator of Washington University Open Scholarship. For more information, please contact digital@wumail.wustl.edu.

**THE MODERN AT FORT LEE
PROJECT SR. DESIGNER
2009 - present**

Our team at Elkus Manfredi Architects provided master planning, building design and interior design for the Modern at Fort Lee, a new mixed-use development at the portal of the George Washington Bridge in Fort Lee, New Jersey. The project's two glass towers containing 900 luxury apartments rise from a podium above the Palisades cliffs and the Hudson River to make an iconic statement clearly identifiable from Manhattan and the west. When completed, the ground level will contain retail and restaurants, a community based theater and museum space all anchored by a new 1.75 acre public park. The Modern will become a major landmark for Fort Lee and a catalyst for significant future growth in the surrounding area.

The north tower construction is nearing completion and is scheduled to open in November. Tower two is currently in the construction document phase.

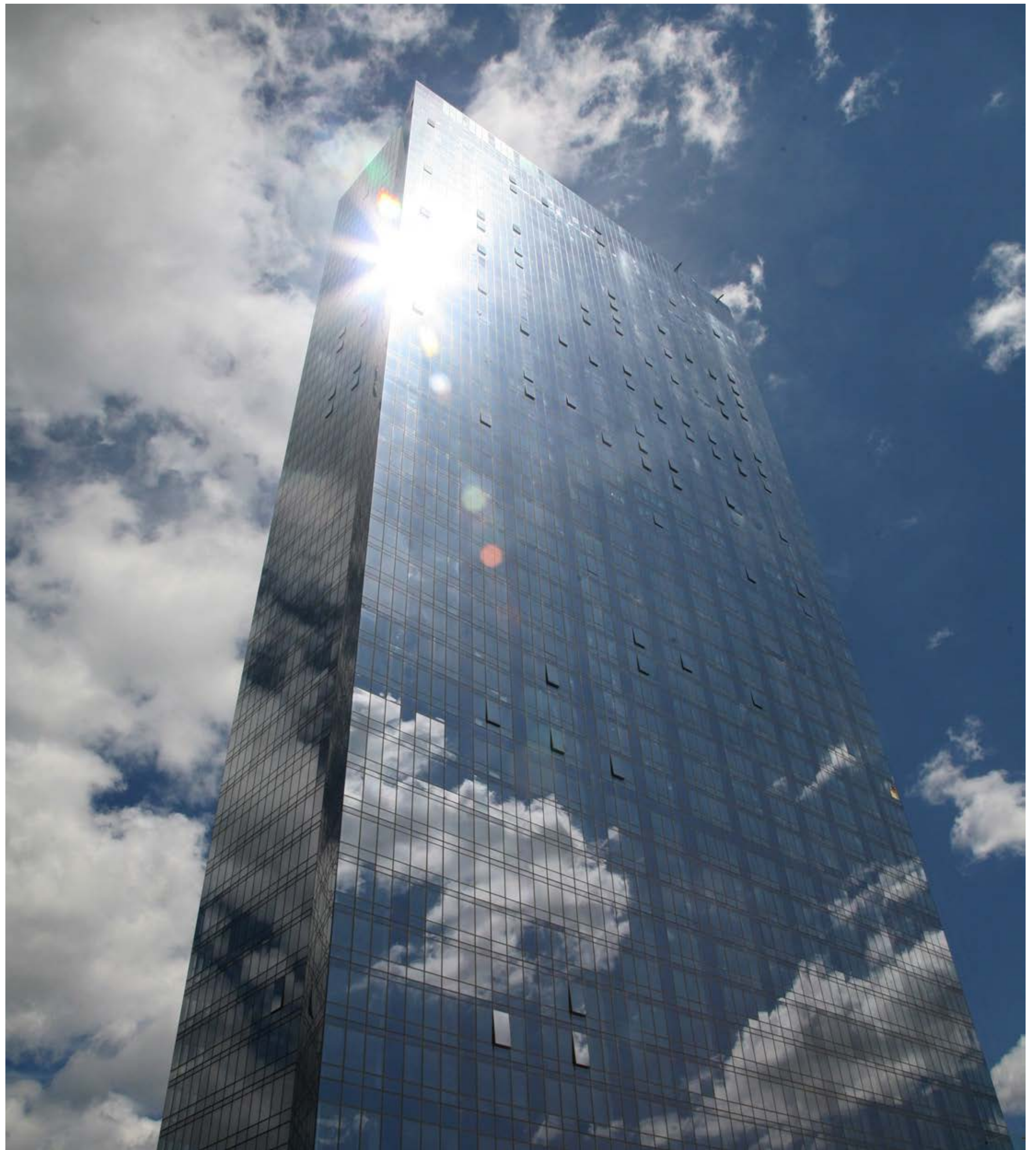


photo by David Searis

Alumnae Biography

BIOGRAPHY

Beth, a Senior Associate at Elkus Manfredi Architects in Boston, leads design teams for a wide range of commercial and institutional project types. Emphasizing collaboration, she mentors younger staff to listen and translate client goals and aspirations into designs that meet the unique criteria of each project.

Prior to returning to Boston in 1995, Beth spent eight years at Kohn Pedersen Fox on projects including Deutsche Bank in Frankfurt and the World Bank in Washington, D.C. She received her M. Arch from Harvard University Graduate School of Design. Washington University instilled in her a passion for the design process, pursuing simple and elegant solutions to complex problems.

PUBLICATIONS

Kaysen, Ronda "Transforming a Skyline" *The New York Times*. **October 17, 2014.**

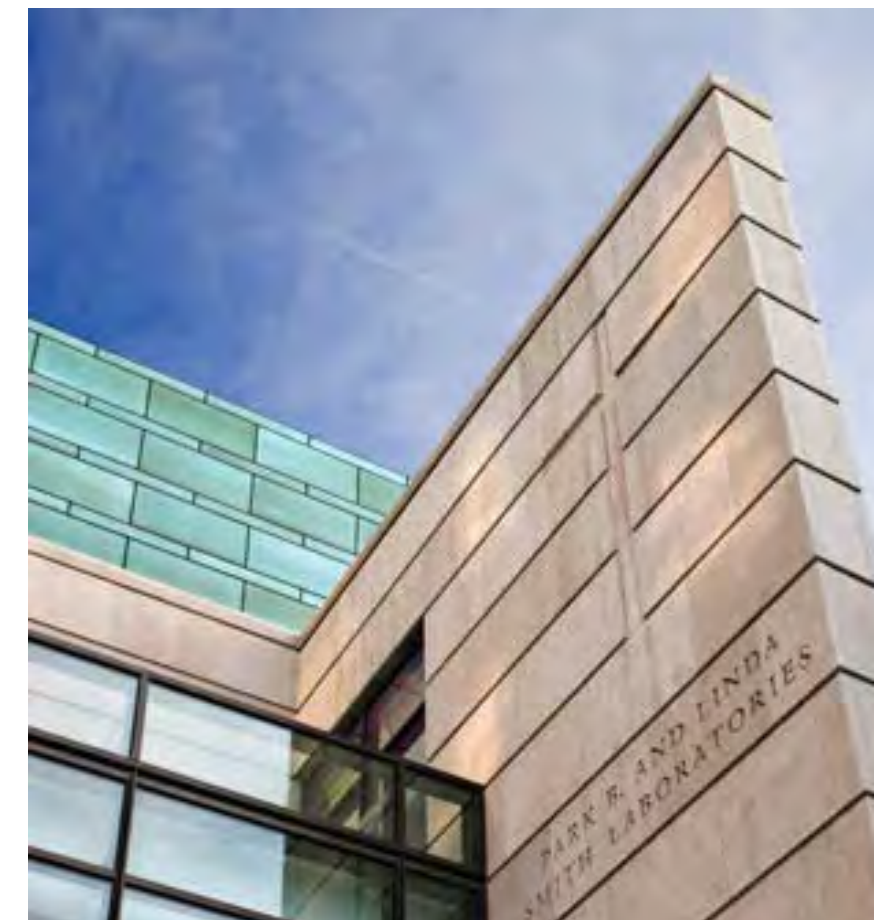
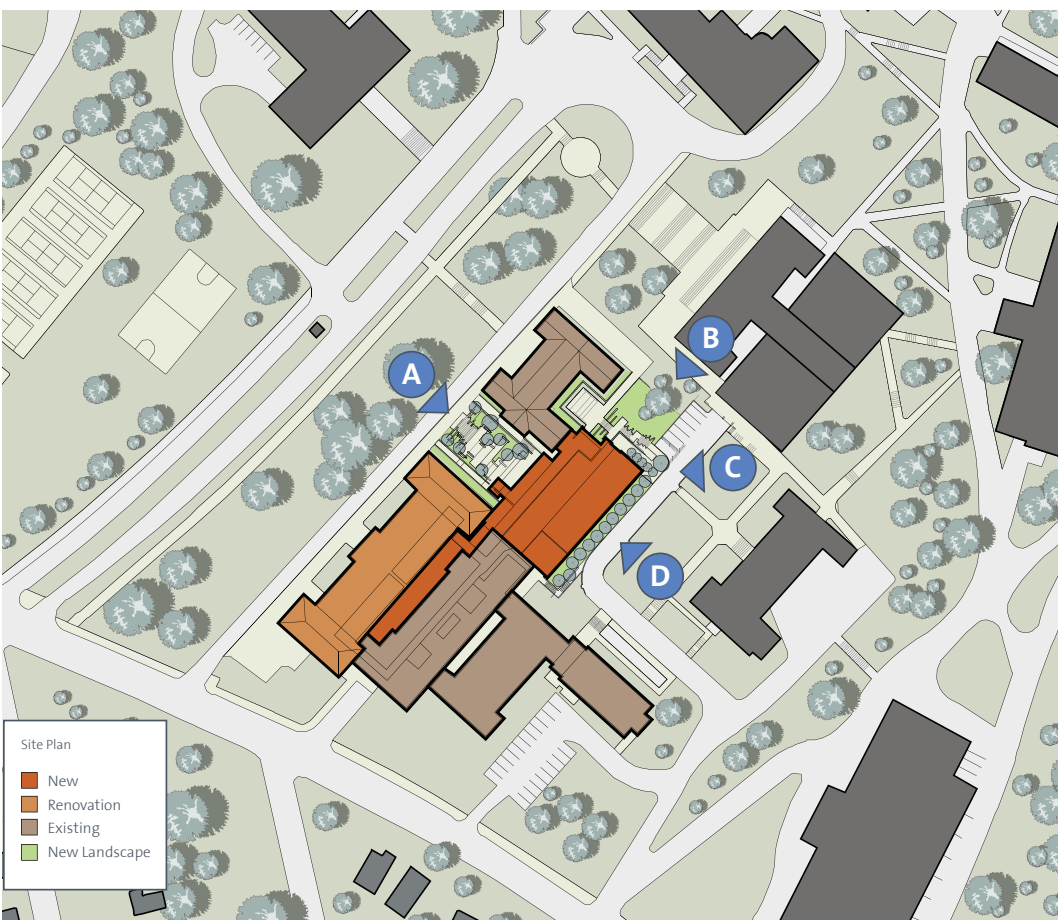
Tat, Linh "Luxury Fort Lee High-Rise Transforms Bergen County Skyline" *The Record*. **November 19, 2013.**

COLLEGE OF THE HOLY CROSS, WORCESTER, MA
INTEGRATED SCIENCE COMPLEX
PROJECT SR. DESIGNER
2010

STATEMENT
Our team at EYP Architecture & Engineering designed the Integrated Science Complex to foster collaborative interdisciplinary science teaching, learning, and research. This LEED Gold Certified facility unites the renovated Haberlin Hall with Beaven, O'Neil, and Swords Halls to create a state-of-the-art teaching and research complex for Chemistry, Physics and Mathematics.

New and renovated atria form a network of public spaces giving the complex a connective spine which creates an expansive learning commons that has become a new hub of campus life. Transparent walls and strategic adjacencies put science on display for all to see.

Sustainable design features, including energy recovery wheels, variable air volume fume hoods, envelope improvements, and advanced lighting controls lower total energy consumption.



Alumnae Biography

BIOGRAPHY
Beth, a Senior Associate at Elkus Manfredi Architects in Boston, leads design teams for a wide range of commercial and institutional project types. Emphasizing collaboration, she mentors younger staff to listen and translate client goals and aspirations into designs that meet the unique criteria of each project.

Prior to returning to Boston in 1995, Beth spent eight years at Kohn Pedersen Fox on projects including Deutsche Bank in Frankfurt and the World Bank in Washington, D.C. She received her M. Arch from Harvard University Graduate School of Design. Washington University instilled in her a passion for the design process, pursuing simple and elegant solutions to complex problems.

AWARDS
College of the Holy Cross Integrated Science-Complex
• AIA NE 2011 Honor Award for Design Excellence
• 2010 Honor Award Boston Society of Architects