

Washington University in St. Louis
Washington University Open Scholarship

Margetts Beeline

St. Louis Projects, Office for Socially Engaged
Practice

5-2019

Local Lavendar

Tiffany Zheng

Washington University in St. Louis

Follow this and additional works at: https://openscholarship.wustl.edu/spring2019_margetts



Part of the [Urban, Community and Regional Planning Commons](#)

Recommended Citation

Zheng, Tiffany, "Local Lavendar" (2019). *Margetts Beeline*. 1.
https://openscholarship.wustl.edu/spring2019_margetts/1

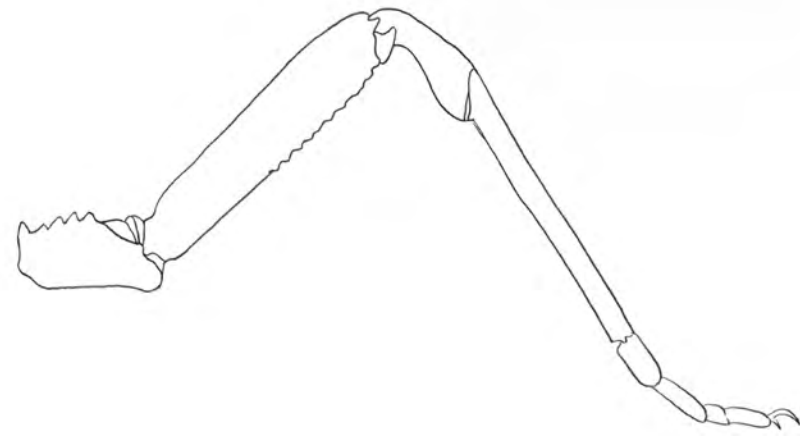
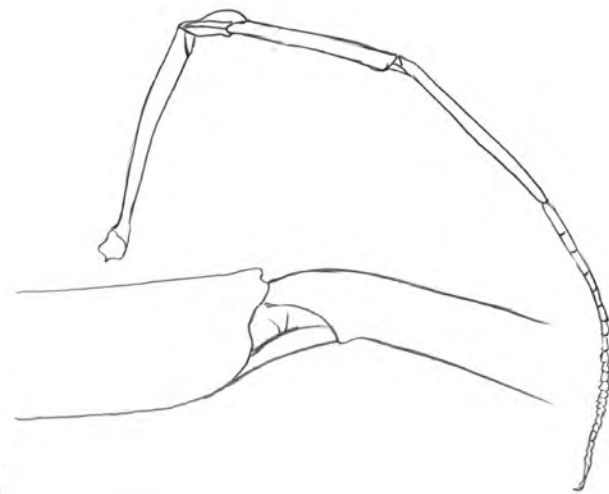
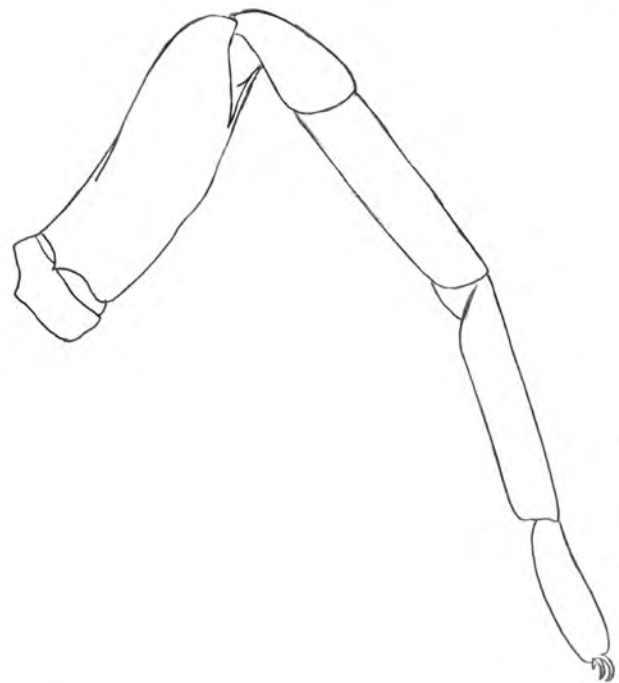
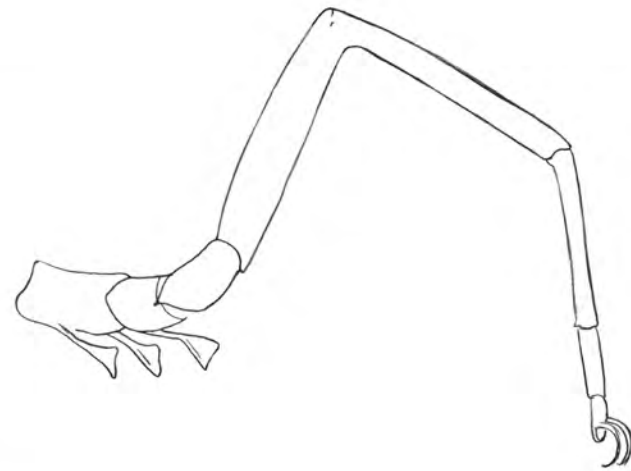
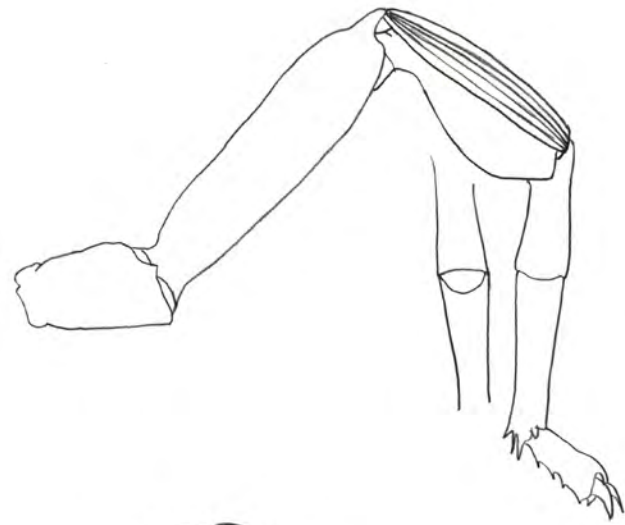
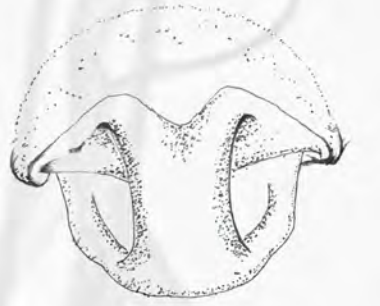
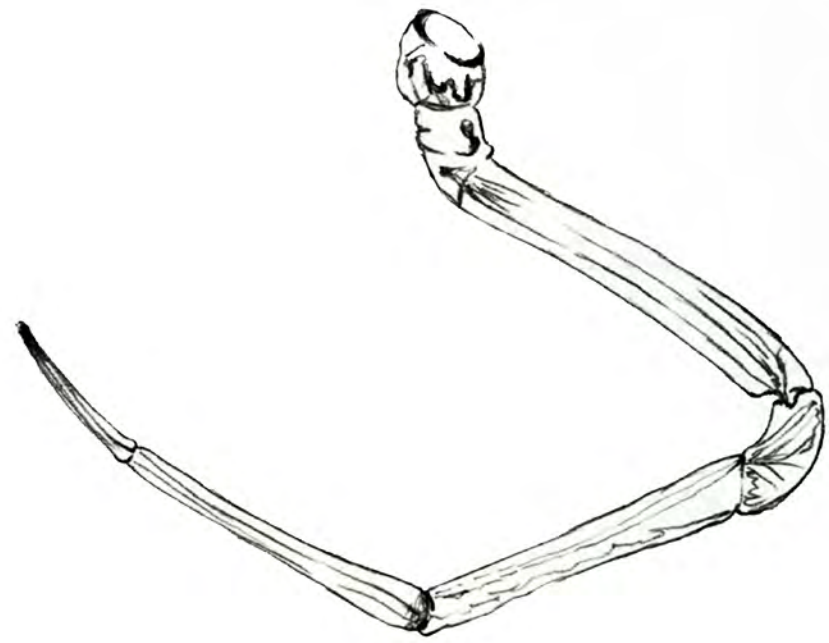
This Studio Board is brought to you for free and open access by the St. Louis Projects, Office for Socially Engaged Practice at Washington University Open Scholarship. It has been accepted for inclusion in Margetts Beeline by an authorized administrator of Washington University Open Scholarship. For more information, please contact digital@wumail.wustl.edu.



St. Louis County
City of St. Louis

Hodiamont Track



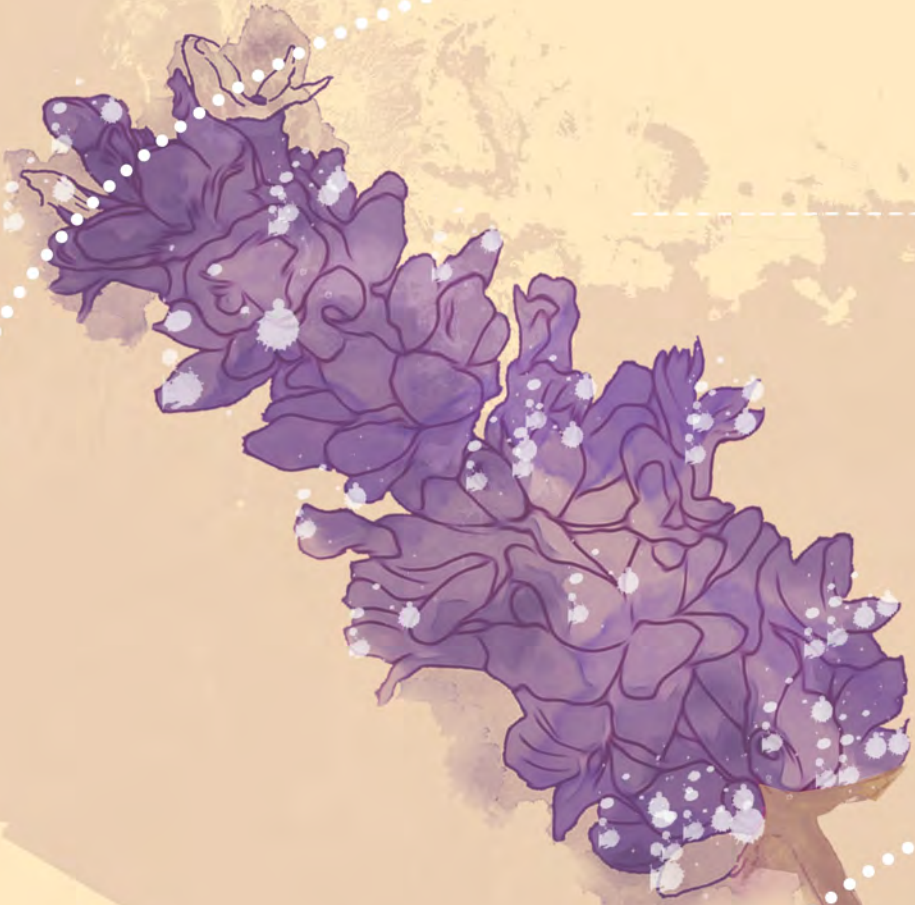




Lavandula angustifolia

Common Name: English Lavender

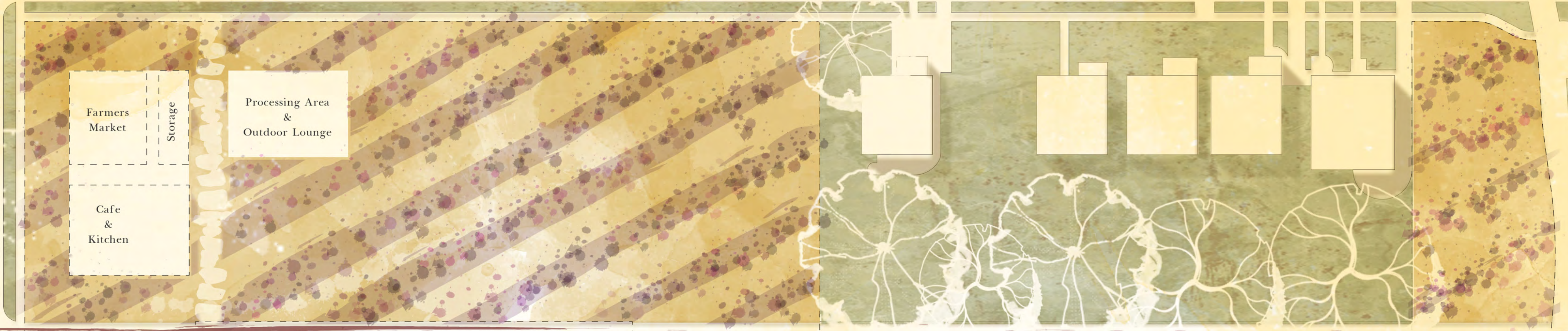
Native to Mediterranean



Well-drained Soil

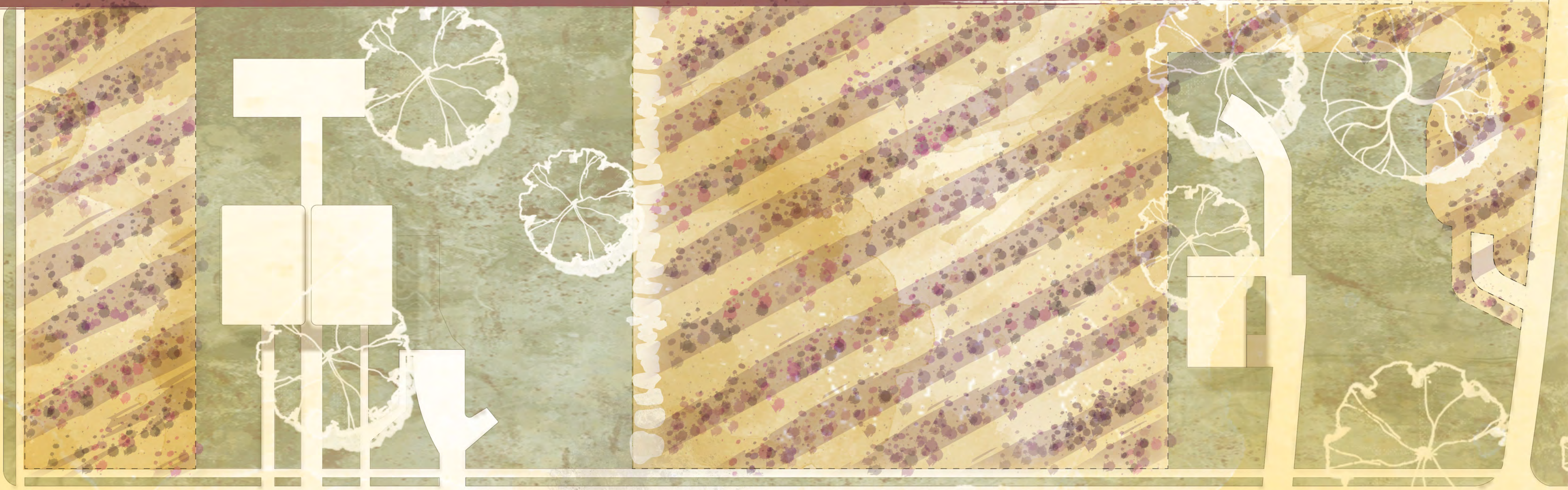


VERNON AVENUE



Hodiamont Track

GOODFELLOW BLVD



CABANNE AVENUE



LOCAL LAVENDER



Planting



Harvesting



Value-Added Lavender Products



Fresh Lavender Bouquet sold in Farmers Market

The Recovery and Renewal of Manatuck Farm
Reed Hilderbrand LLC Landscape Architecture



Lavender Seed



Lavender Soap



Lavender Macarons

Steam Distillation to extract the essential oil



Urban Farm
Architect: Luigi Rosselli Architects



Lavender Essential Oil





MARYVILLE

LAUREL

VERNON

Hodiamont Track

CATES

GOODFELLOW

CLARA

CLEMENS

