

Washington University in St. Louis  
**Washington University Open Scholarship**

---

Margetts Beeline

St. Louis Projects, Office for Socially Engaged  
Practice

---

5-2019

## Garden Intersection

Kai Smith

*Washington University in St. Louis*

Follow this and additional works at: [https://openscholarship.wustl.edu/spring2019\\_margetts](https://openscholarship.wustl.edu/spring2019_margetts)



Part of the [Urban, Community and Regional Planning Commons](#)

---

### Recommended Citation

Smith, Kai, "Garden Intersection" (2019). *Margetts Beeline*. 4.  
[https://openscholarship.wustl.edu/spring2019\\_margetts/4](https://openscholarship.wustl.edu/spring2019_margetts/4)

This Studio Board is brought to you for free and open access by the St. Louis Projects, Office for Socially Engaged Practice at Washington University Open Scholarship. It has been accepted for inclusion in Margetts Beeline by an authorized administrator of Washington University Open Scholarship. For more information, please contact [digital@wumail.wustl.edu](mailto:digital@wumail.wustl.edu).



The intersection of the new Hodiamont Tracks Greenway with Union Boulevard is redesigned, prioritizing the free and frequent movement of people, on foot and on bikes, along the Greenway. The focus on people is further supported by the addition of benches lining the area near the intersection, offering places to rest and meet neighbors.

Supporting all is the introduction of a rich variety of plants. These not only increase the area's biodiversity, but are also chosen to maximize the capture of atmospheric carbon, sequestering it in soil and vegetation, in an effort to begin to offset carbon pollution within the neighborhood.

A raised intersection slopes the road up to the height of the adjacent sidewalk. This makes people in the crosswalk more visible to drivers, and forces vehicles to slow down as if there were a speed bump. It also makes crossing the street easier for wheelchair users, cyclist, and people pushing strollers because it eliminates the level change that can be hard on smaller wheels.

Including benches in the landscape of the new greenway would allow the area to be used as a gathering place for community members to meet, relax, rally, and simply enjoy being outside.

The small planters placed along the path on either side of the intersections facilitate the carbon capture function that all urban greenspaces have the potential to fulfill. Their shape (which informs the pattern of greenway's path at the section) is derived from the shape that carbon molecules take on when bound into the soil.

The foot traffic brought in by the greenway could potentially result in the restoration of the bus stop that used to be in front of the currently empty lot on the site. In addition, bus stops with covered shelters are used more heavily than the exposed alternatives.



By extending the curb further out, the distance across open street is reduced. Curb extensions also deter people who might be tempted to park in front of the path opening.

Planted medians in the center lanes on either side of the intersection helps create a "pinch point" that forces cars to pass through more slowly, making it safer to cross the street.

This raised planter protects greenway users from wayward vehicles without interrupting the flow/aesthetic of the path itself.

Common Name: Anemone Aster  
 Scientific Name: *Symphoricarpos oblongifolium*  
 Supports: butterflies, bees, wasps, birds  
 Characteristics:  
 • native to Missouri  
 • attractive blooms  
 • durable  
 • long lived  
 • compact

Common Name: Redbud Tree  
 Scientific Name: *Cercis canadensis*  
 Characteristics:  
 • can be planted under utility lines  
 • grows in full sun to partial shade  
 • showy pink flowers in spring  
 • prefers well drained soil  
 • native to Missouri  
 • fast growing

Common Name: Wild Plum Tree  
 Scientific Name: *Prunus americana*  
 Supports: red-spotted purple and tiger swallow-tails  
 Characteristics:  
 • can be planted under utility lines  
 • grows in full sun to partial shade  
 • native to Missouri  
 • showy flowers  
 • fast growing

Common Name: Wild Hydrangea  
 Scientific Name: *Hydrangea arborescens*  
 Supports: bees, butterflies, wasps  
 Characteristics:  
 • native to Missouri  
 • attractive blooms  
 • durable  
 • long lived  
 • compact







HODIAMONT

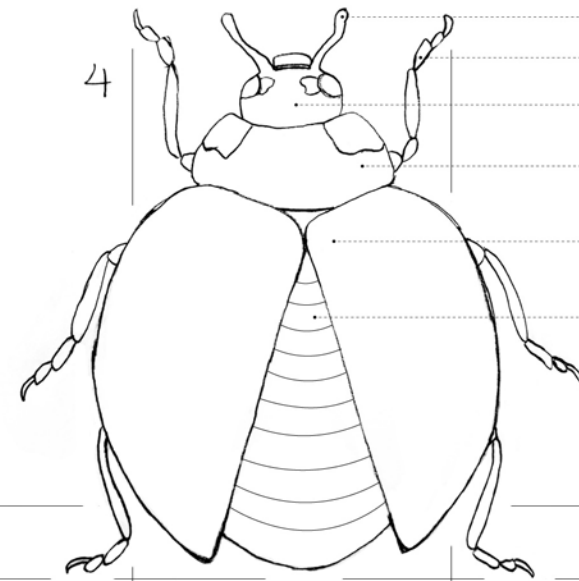
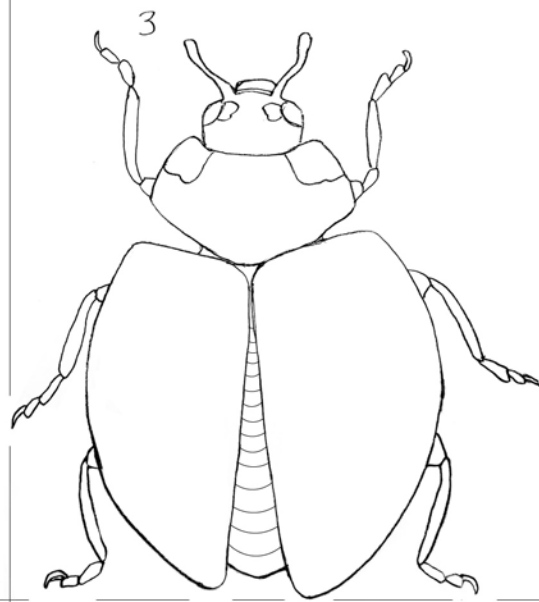
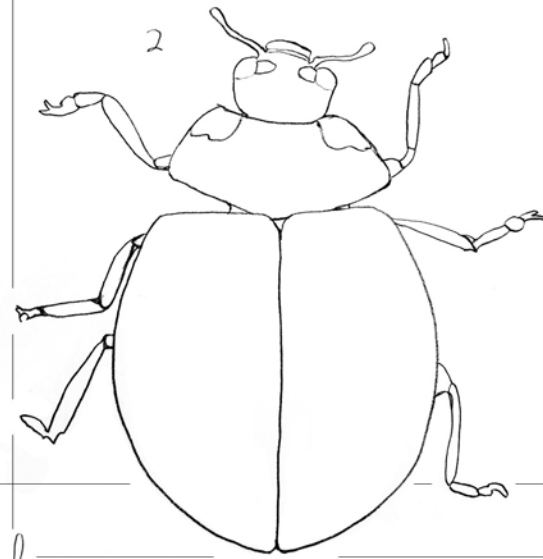
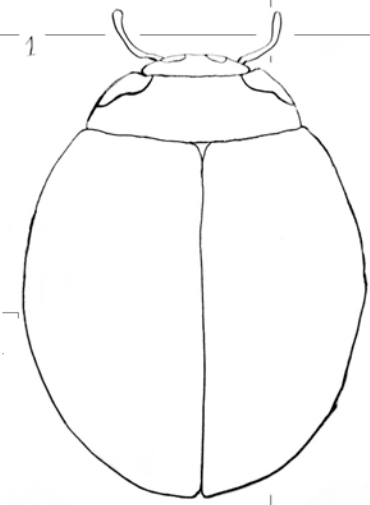
TRACKS

SITE

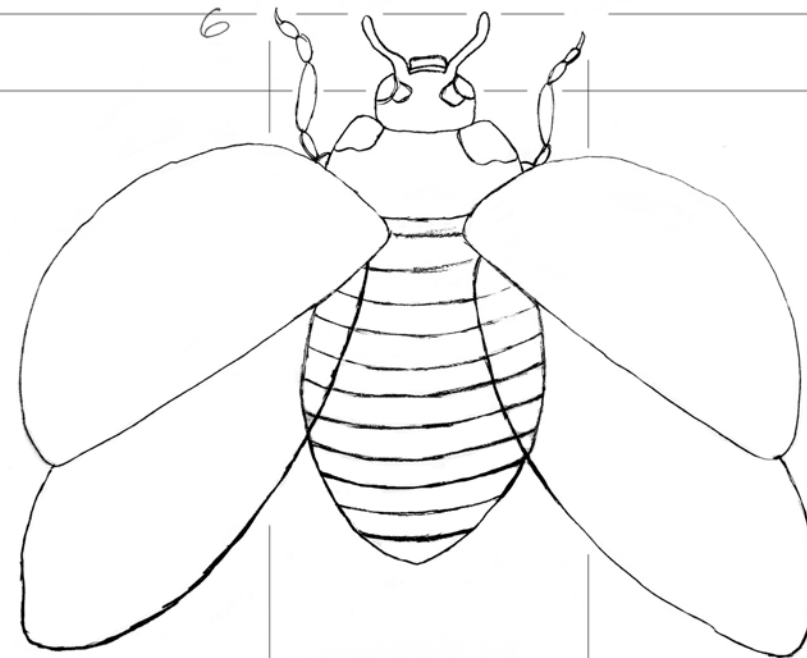
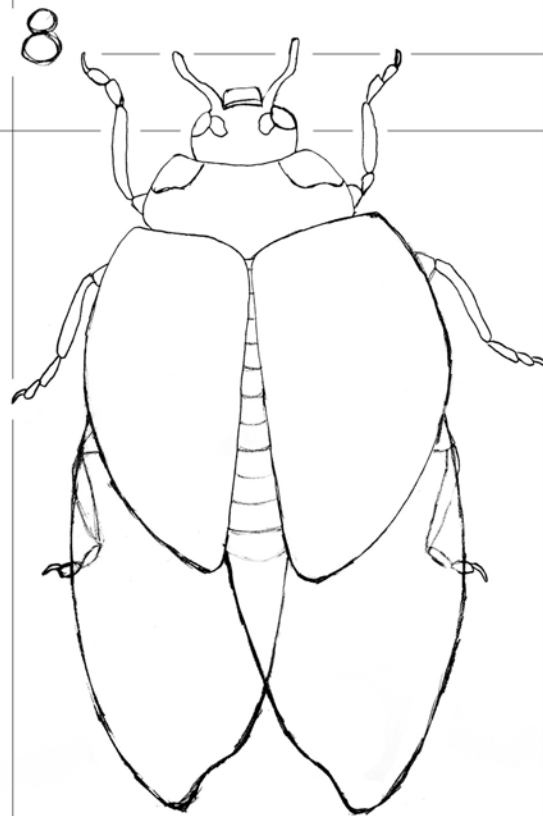
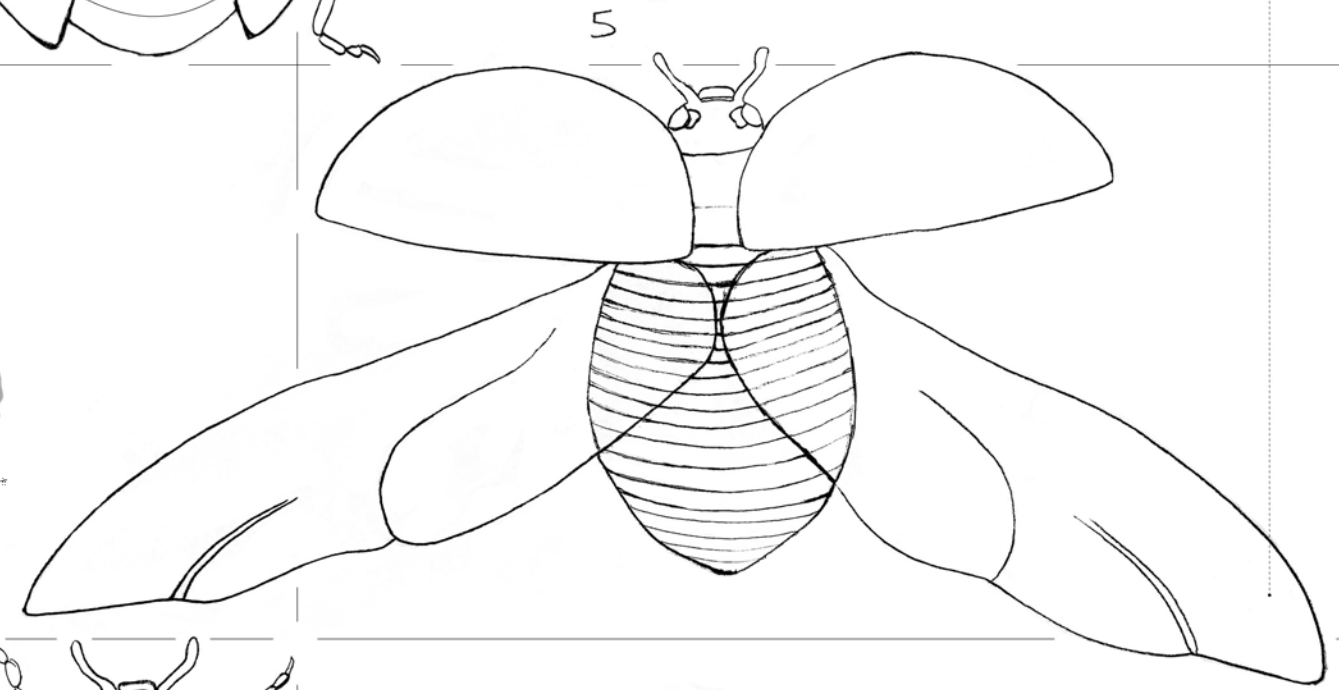
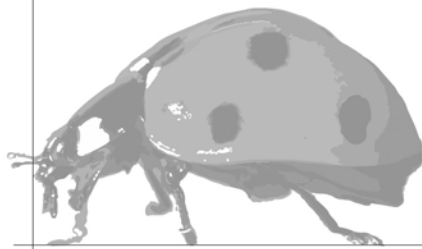
watershed boundary

Etzel Ave  
Bartmer Ave  
Chamberlain Ave  
Maple Ave  
Vernon Ave  
Cabanne Ave  
Cates Ave  
Clemens Ave  
Enright Ave

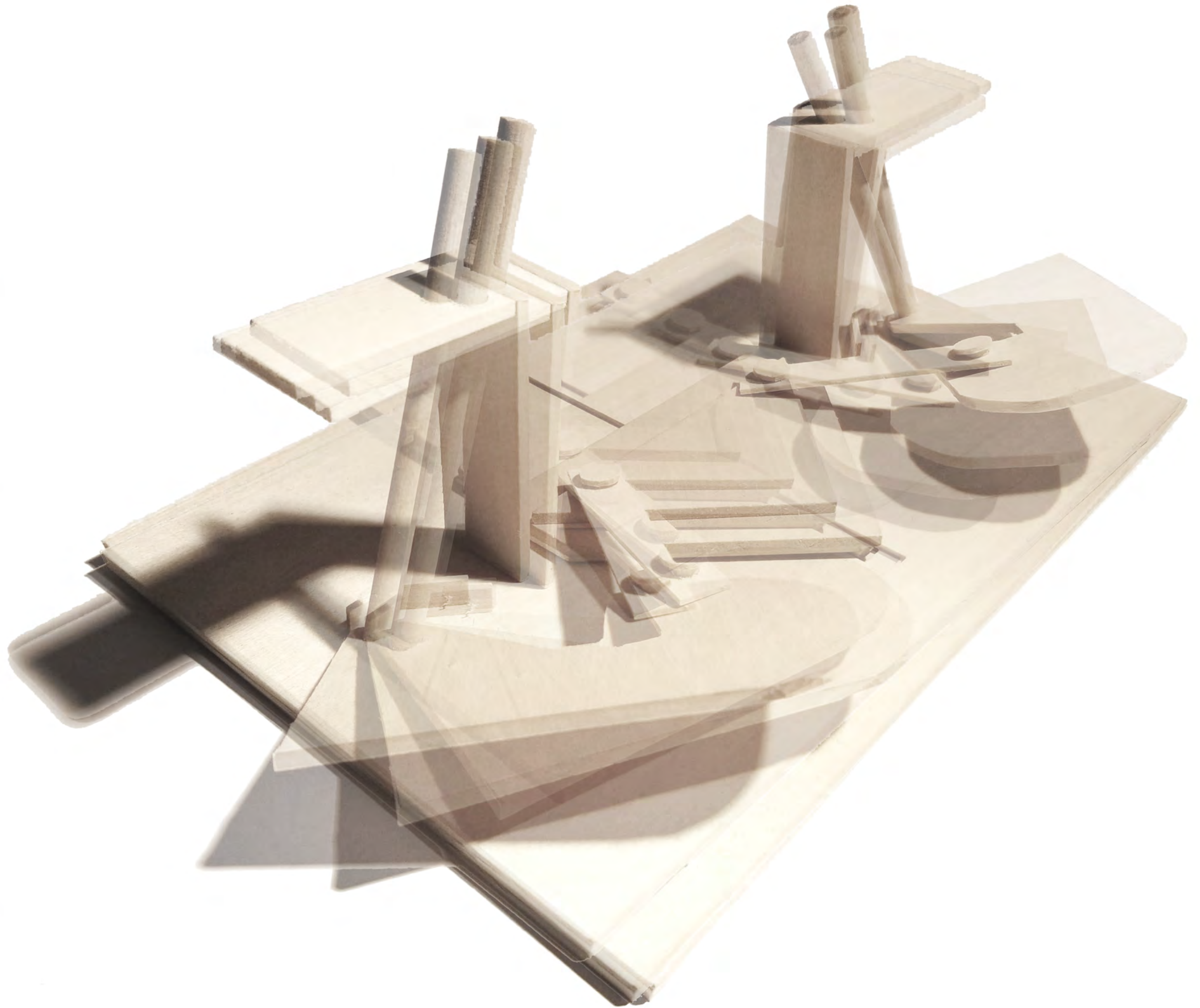
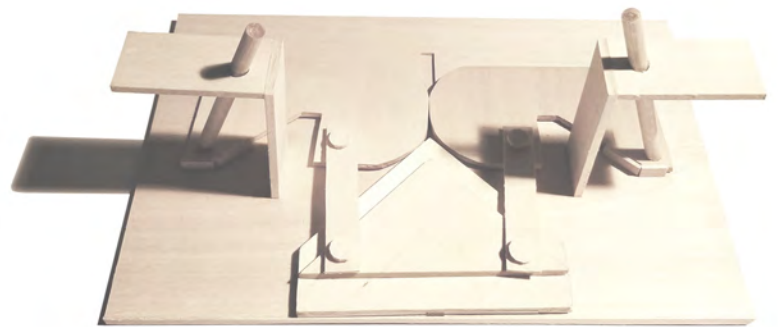
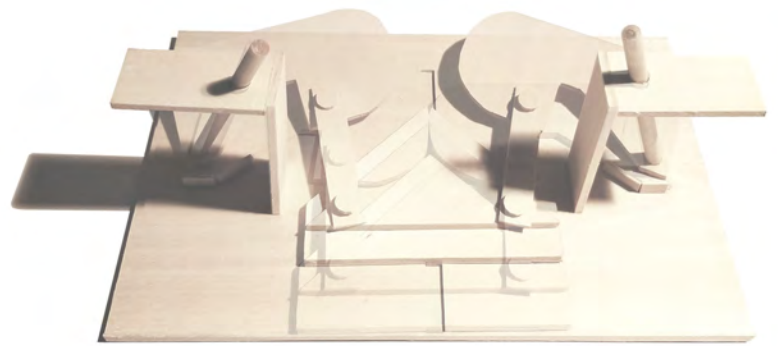
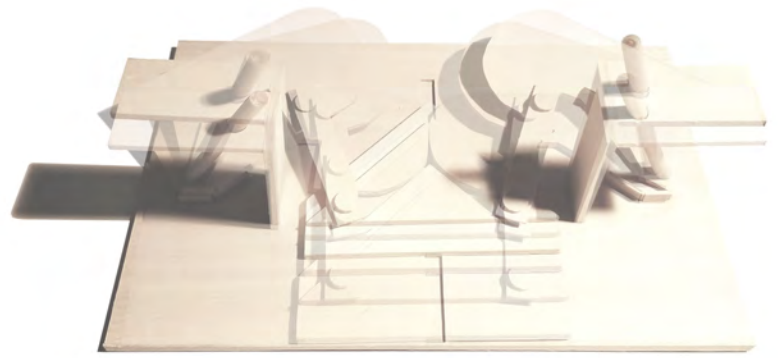
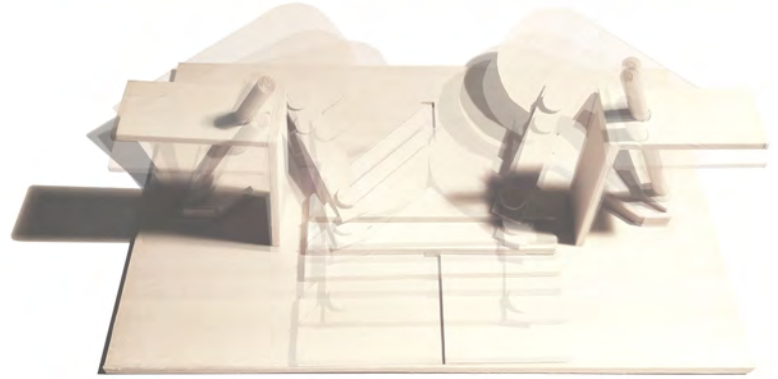




antenna  
 leg  
 head  
 pronotum  
 elytron  
 abdomen  
 wing



Movement of Elytra in the  
 Coccinellidae Coccinella  
 Septempunctata





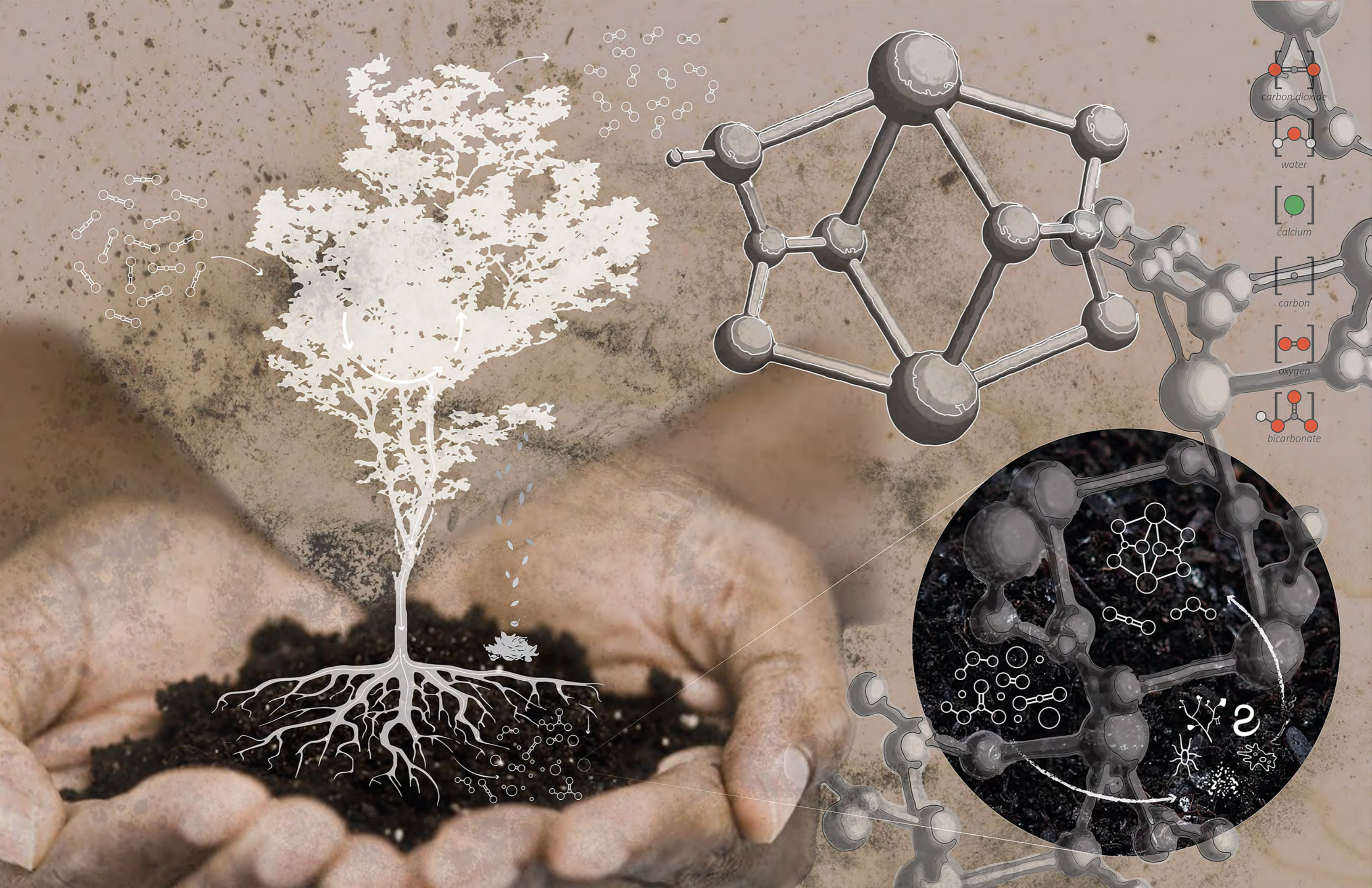
# The Hackberry Tree and the Ladybug

*Coccinella septempunctata*

*Celtis occidentalis*







carbon dioxide

water

calcium

carbon

oxygen

bicarbonate