

Washington University in St. Louis
Washington University Open Scholarship

Margetts Beeline

St. Louis Projects, Office for Socially Engaged
Practice

5-2019

Birdscape Programming

Rebecca Shen

Washington University in St. Louis

Follow this and additional works at: https://openscholarship.wustl.edu/spring2019_margetts



Part of the [Urban, Community and Regional Planning Commons](#)

Recommended Citation

Shen, Rebecca, "Birdscape Programming" (2019). *Margetts Beeline*. 5.
https://openscholarship.wustl.edu/spring2019_margetts/5

This Presentation is brought to you for free and open access by the St. Louis Projects, Office for Socially Engaged Practice at Washington University Open Scholarship. It has been accepted for inclusion in Margetts Beeline by an authorized administrator of Washington University Open Scholarship. For more information, please contact digital@wumail.wustl.edu.



SITUATIONAL ASSEMBLAGE



Hodiament Streetcar Line
1859 - 1966



Suburbanization
Automobiles



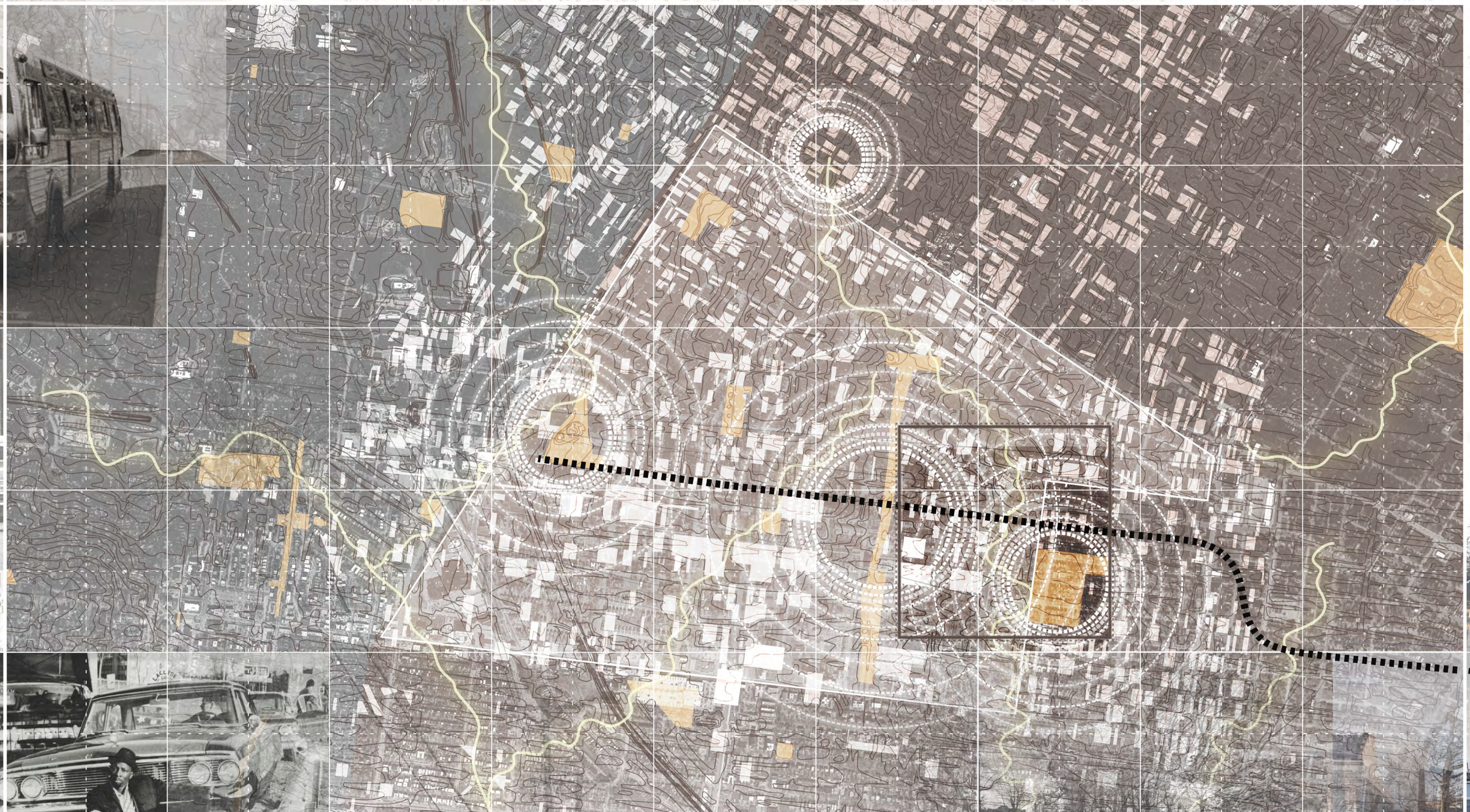
Hodiament Streetcar Crashes Into Building



Wreckage at 312 North Sarah street last night after a Hodiament streetcar crashed into a building. The car was carrying a large number of passengers and the driver was killed. The wreckage was removed and the street was closed for several hours.

THROUS VISIT CARDINAL'S BIER AT MULLINGAR

Cardinal's bier was taken to Mullingar for the night. The Cardinal's bier was taken to Mullingar for the night. The Cardinal's bier was taken to Mullingar for the night.



West End Neighborhood
St. Louis, MO

The West End neighborhood is a paradigm for character of a St. Louis urban city over time. Once with a flourishing population in the mid 1900s, this neighborhood now finds itself losing its residents to more favorable suburban areas. With the invention of the automobile came the demise of public transportation.

The Hodiament streetcar line underwent its last trip in May of 1966. The tracks still remain today, serving as a symbol of the vibrant commercialization and boistering that once characterized the area around the tracks, before "White Flight" into the county.

A long history of civil rights activism reminds us of the strength and resilience of the city and neighborhood. Various parks are named after local activists, such as Ivory Perry and Gwen B. Giles who fought for social justice and against environmental racism.



HODIAMONT TRACKS



Gwen B. Giles

Ivory Perry
Civil Rights

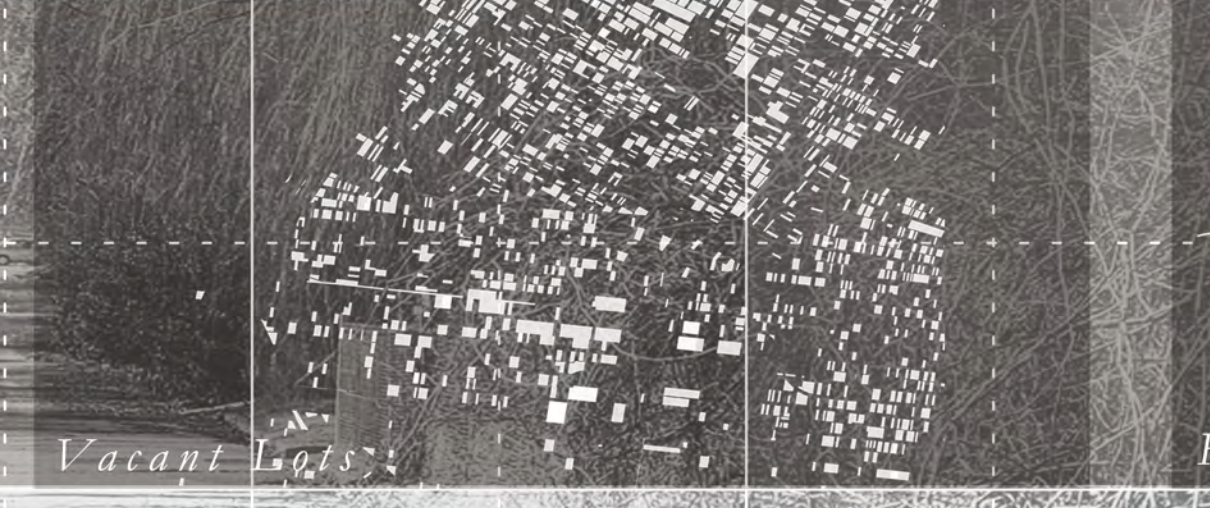
Vacancy



Civil Rights Landmarks



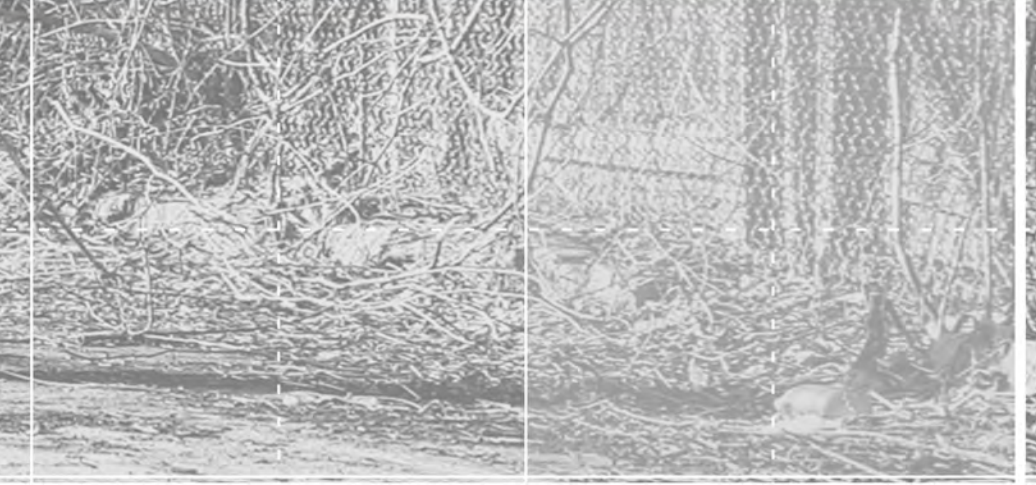
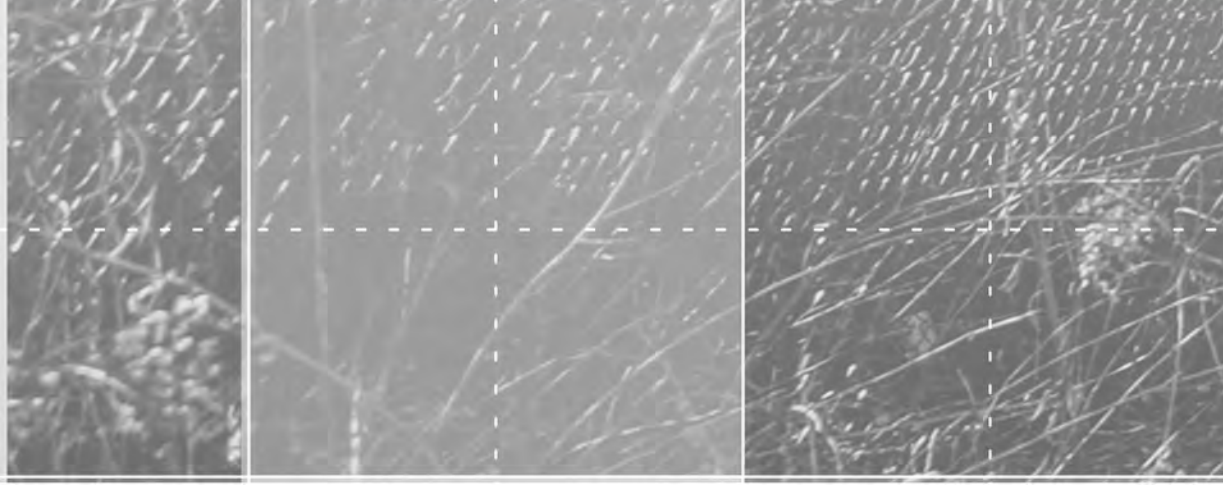
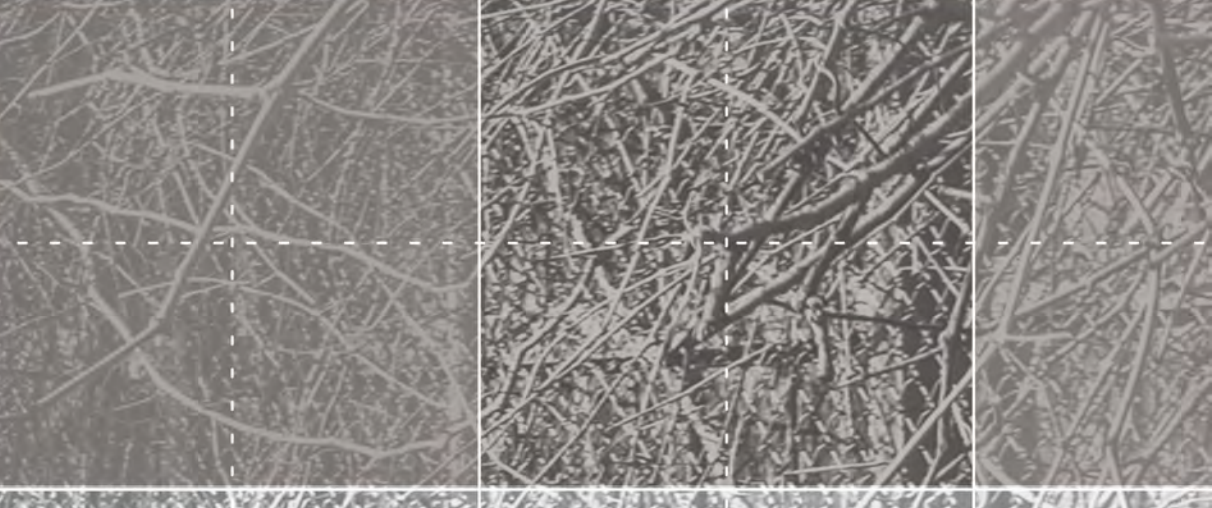
Open Space



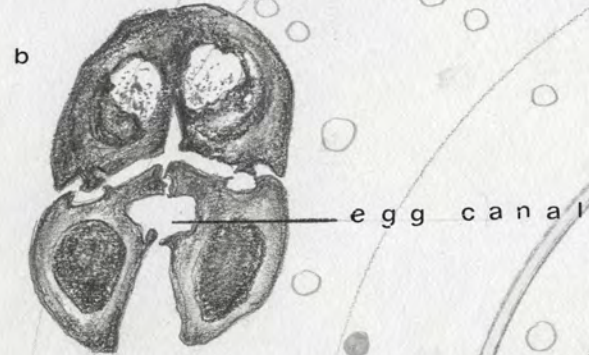
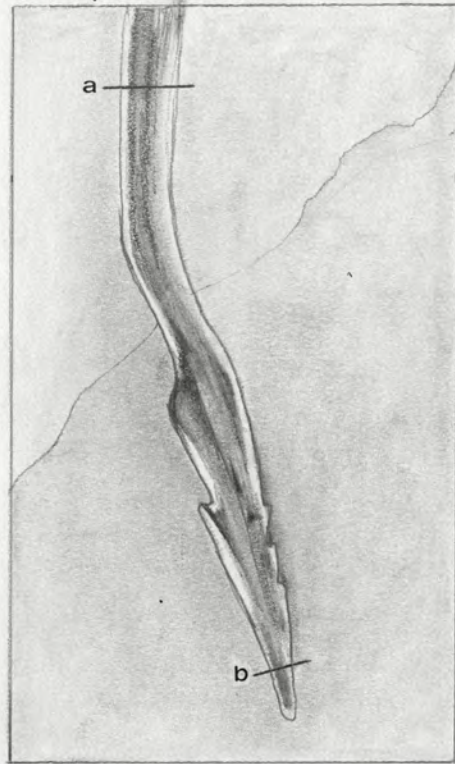
Vacant Lots



Historical Creeks

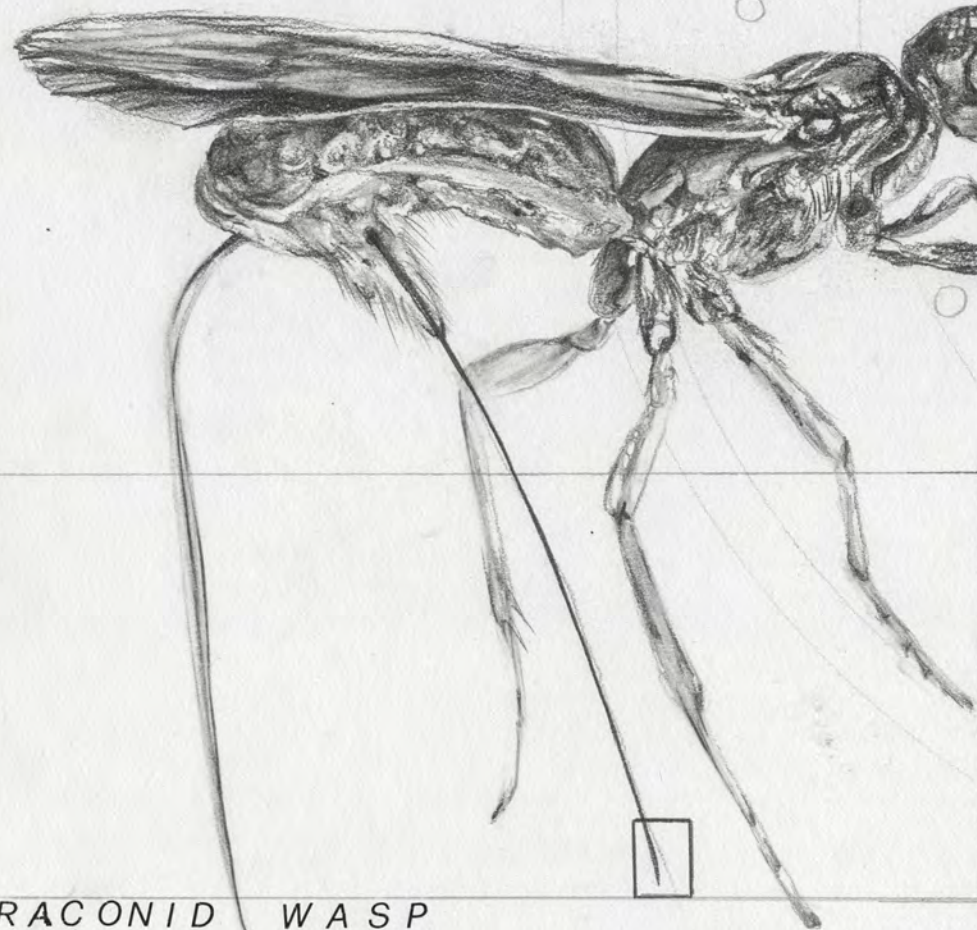


ovipositor

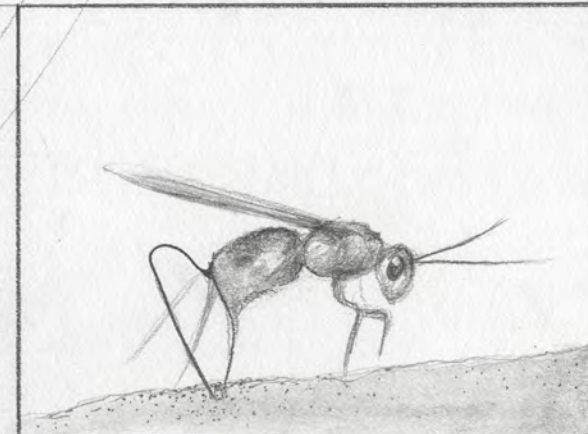
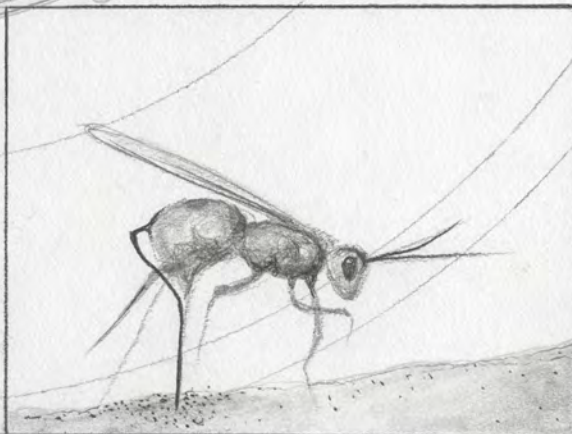
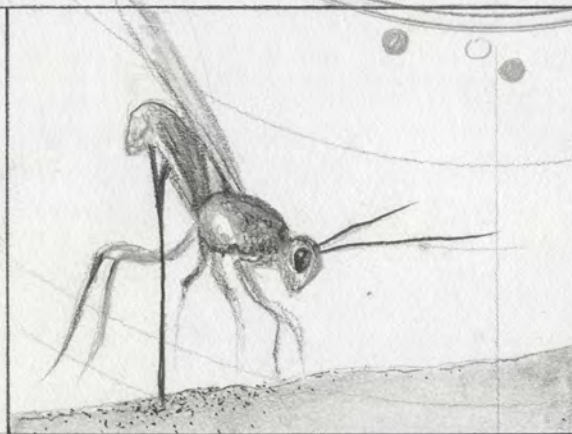
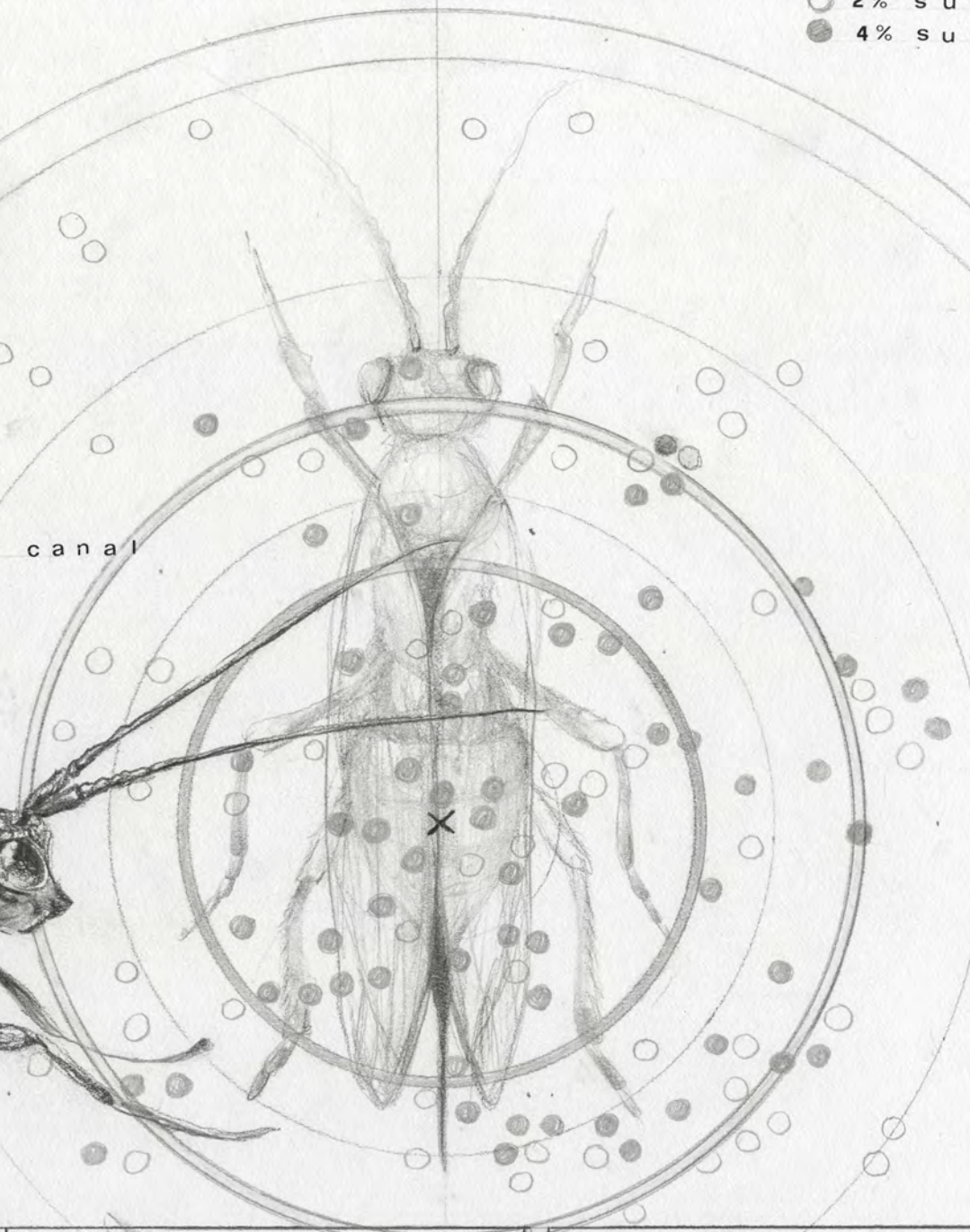


egg canal

deposit locations
○ 2% substrate
● 4% substrate



BRACONID WASP



oviposition

3 emergence

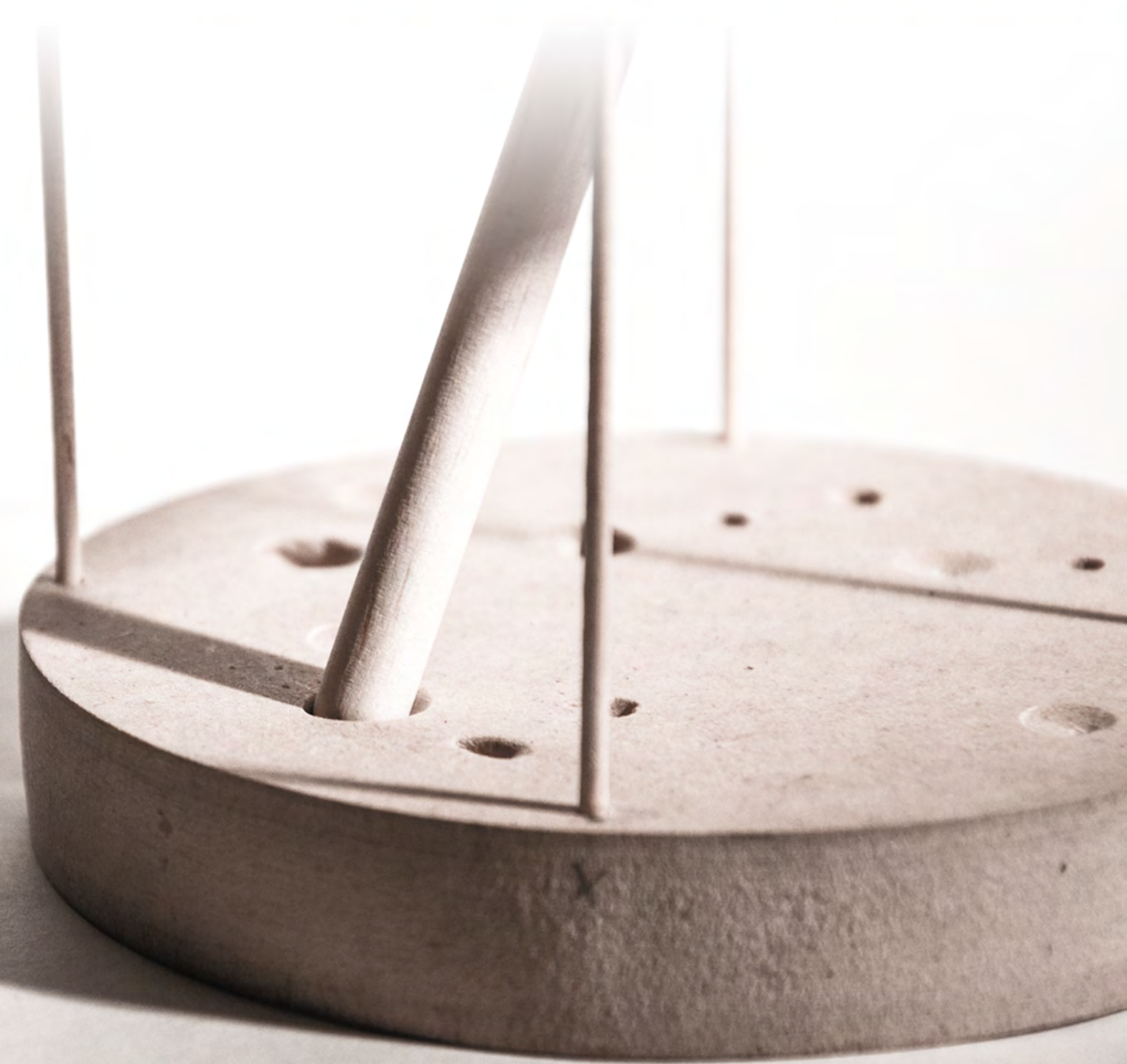


2 development



1 penetration









HODIAMONT
GREENWAY

BOARDWALK

community birdhouse
maintenance

pulley

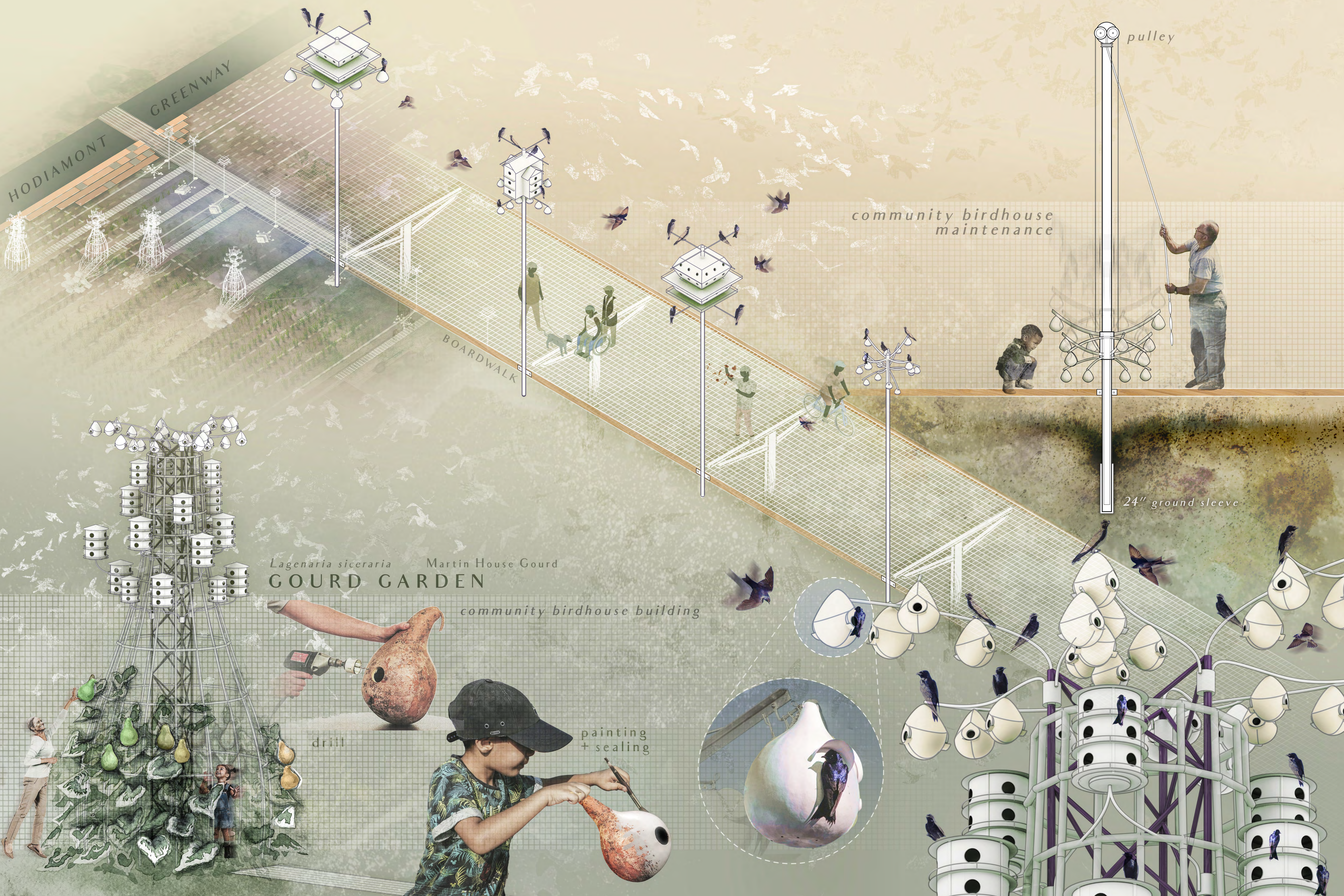
24" ground sleeve

Lagenaria siceraria Martin House Gourd
GOURD GARDEN

community birdhouse building

drill

painting
+ sealing



plant undergrowth through mesh

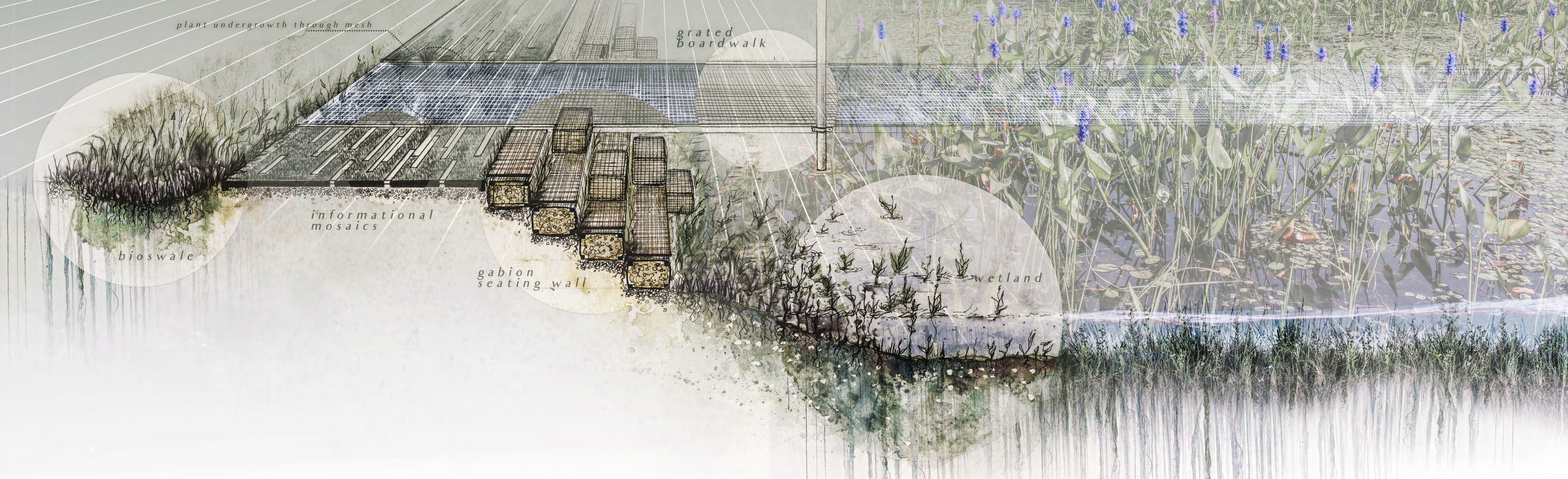
grated boardwalk

informational mosaics

bioswale

gabion seating wall

wetland





SCISSOR-TAILED FLYCATCHER

Gwen B. Giles Park

Parkland Park

Porter Park

PAINTED BUNTING

Dozier School

PROTHONOTARY WARBLER

NORTHERN CARDINAL

PURPLE MARTIN

KIPP Victory Academy

Hylton Point Senior Home

Ivory Perry Park

WEST END NEIGHBORHOOD

Existing Neighborhood Amenities

- Religious
- School
- Grocery
- Parks

Future species-specific interventions

CONNECTIVITY

AVIAN HABITAT ACTIVATION NODES



Why should we care about the purple martin?
Purple Martin populations are undergoing long-term declines in many parts of North America. Purple martins consume large quantities of species that are pests to humans including flies, stink bugs, and mosquitoes. They are beautiful, iridescent birds that are enjoyed by many bird watchers.

Where do purple martins live?
Purple martins prefer to live in open spaces close to water, because they find lots of insects to eat near wetlands, swamps, and wet meadows. Purple martins are very used to humans and live in man-made birdhouses, called "martin houses," designed specially for them.

How do purple martins behave?
Colonies are social and explore their surroundings together. This involves visiting other colonies, scoping out potential food sources, and visiting nearby streams and swamps. Purple martins search for food together in large flocks and call over the rest of the colony to come feed.

When can I find purple martins?
They live and breed in North and Central America and spend the winter in South America. Purple martins are active during the day and are most active at dawn and dusk.



BIRDSCAPE
PROGRAMMING



AFTER SCHOOL PROGRAMS

1
BIRDHOUSE
BUILDING



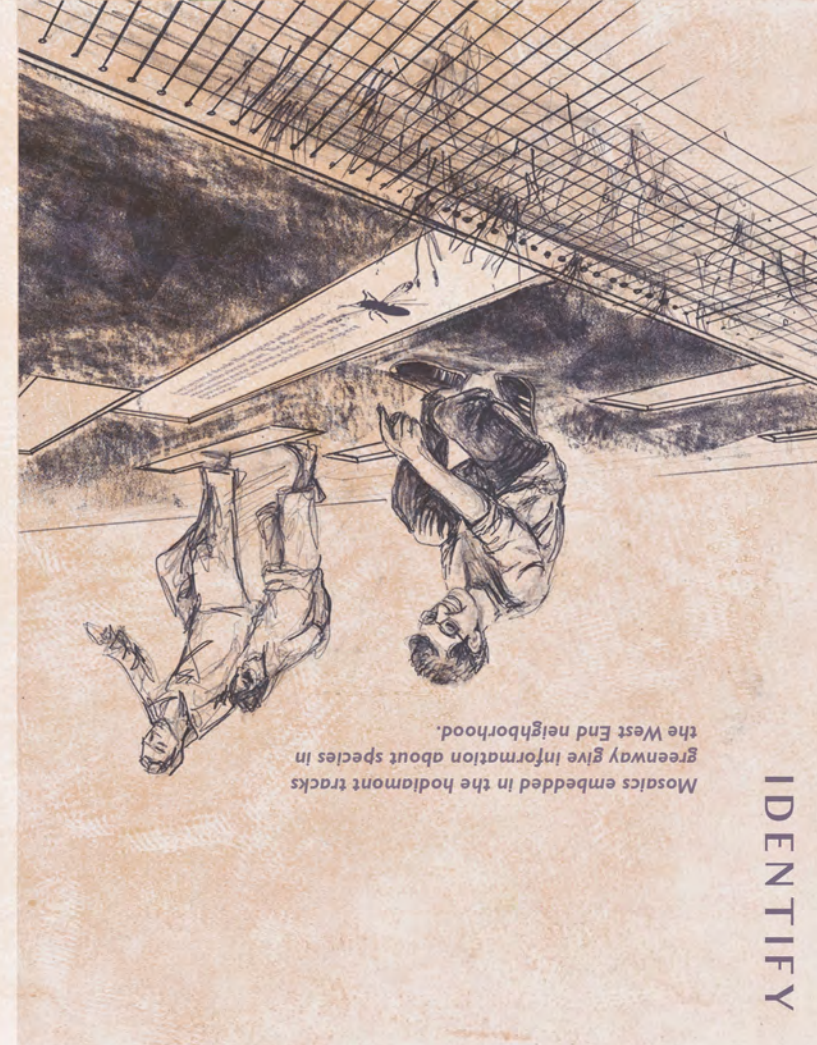
2
MARTIN HOUSE
GOURD PAINTING



3
GOURD
GARDENING



4
POLLINATOR
SCAVENGER
HUNT



Mosaics embedded in the sidewalk tracks in the West End neighborhood. Greenway give information about species in