

Washington University in St. Louis  
**Washington University Open Scholarship**

---

Margetts Beeline

St. Louis Projects, Office for Socially Engaged  
Practice

---

5-2019

## Biodiverse Batway

Graham McAllister

*Washington University in St. Louis*

Follow this and additional works at: [https://openscholarship.wustl.edu/spring2019\\_margetts](https://openscholarship.wustl.edu/spring2019_margetts)



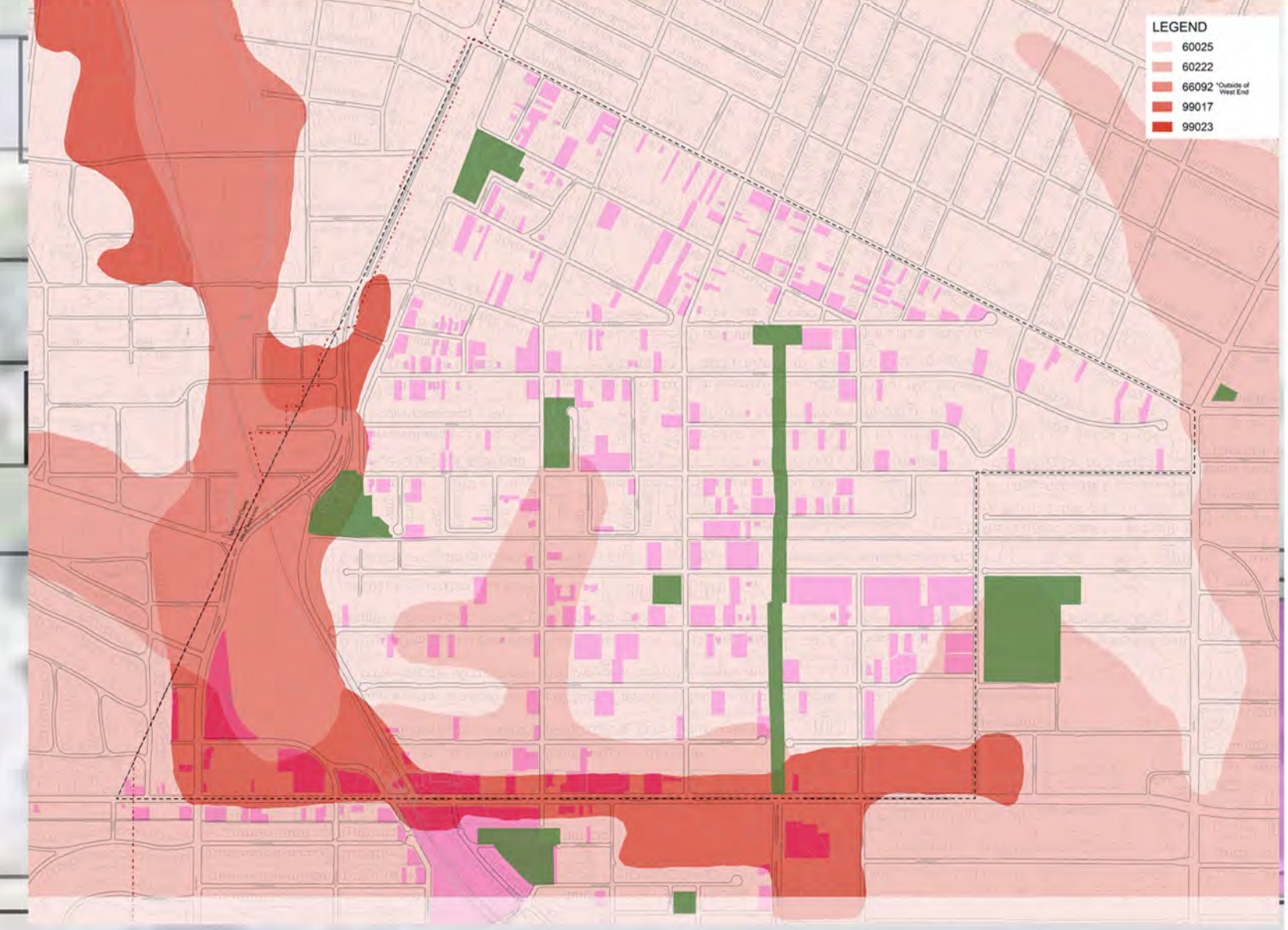
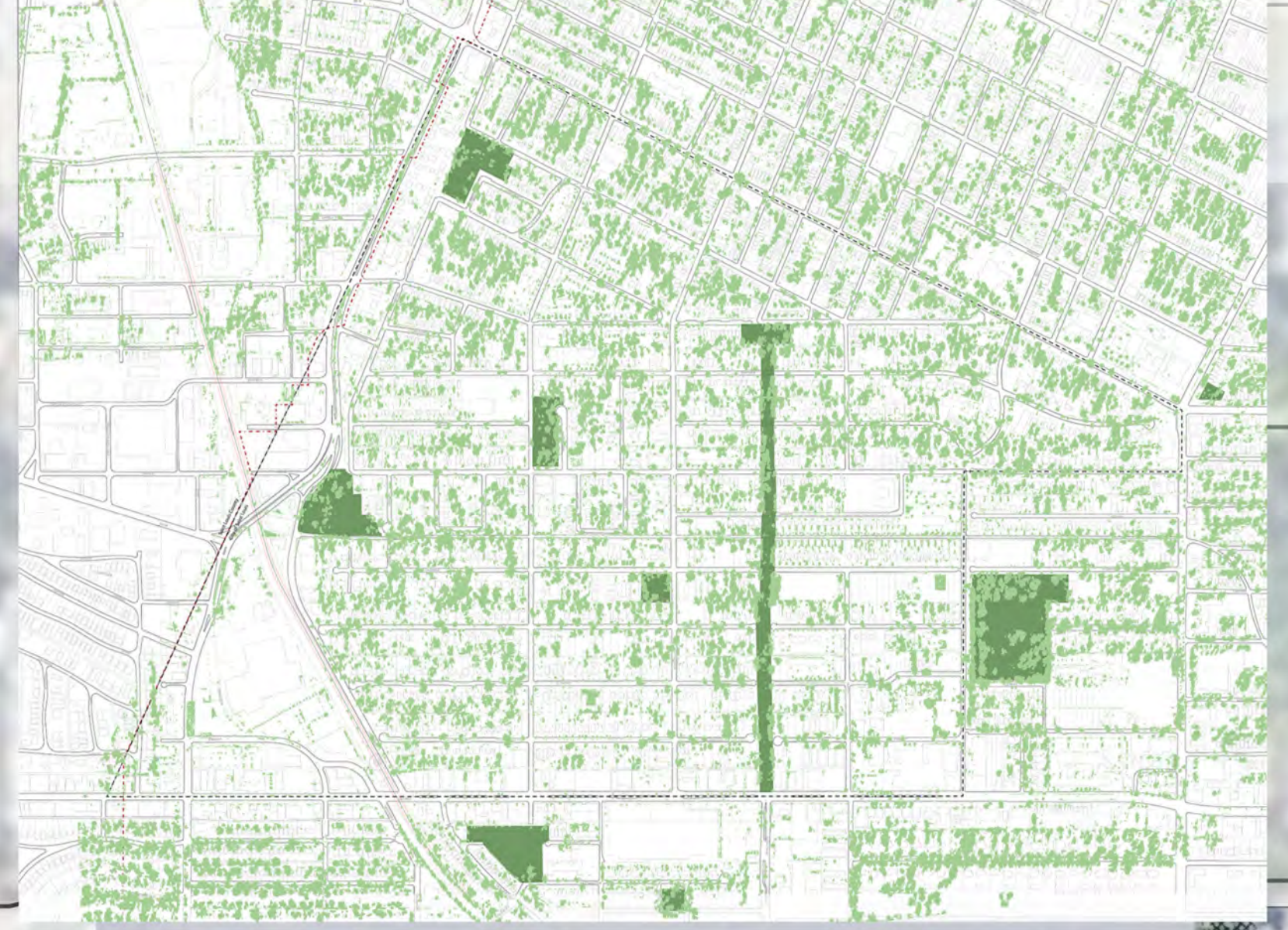
Part of the [Urban, Community and Regional Planning Commons](#)

---

### Recommended Citation

McAllister, Graham, "Biodiverse Batway" (2019). *Margetts Beeline*. 6.  
[https://openscholarship.wustl.edu/spring2019\\_margetts/6](https://openscholarship.wustl.edu/spring2019_margetts/6)

This Studio Board is brought to you for free and open access by the St. Louis Projects, Office for Socially Engaged Practice at Washington University Open Scholarship. It has been accepted for inclusion in Margetts Beeline by an authorized administrator of Washington University Open Scholarship. For more information, please contact [digital@wumail.wustl.edu](mailto:digital@wumail.wustl.edu).

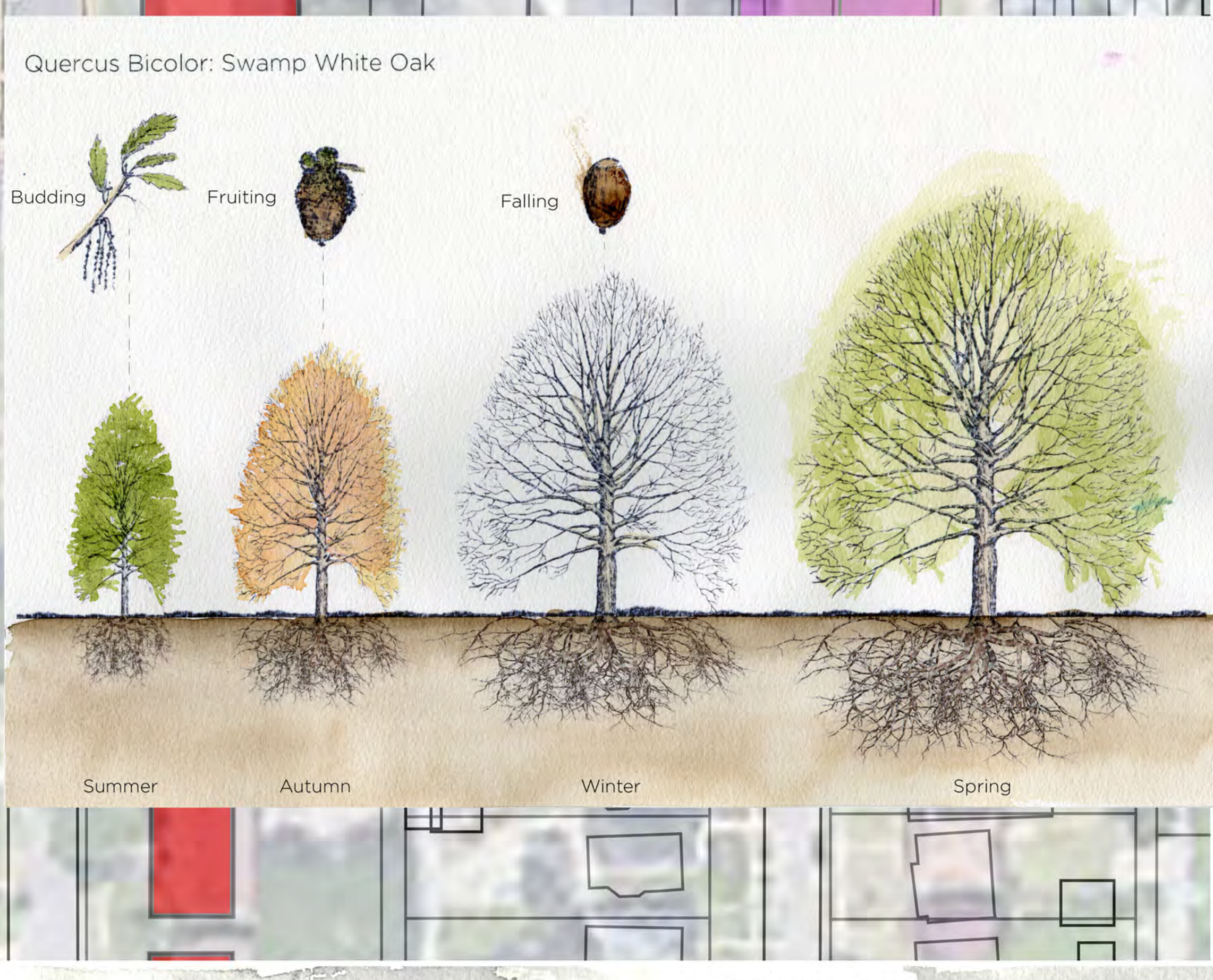
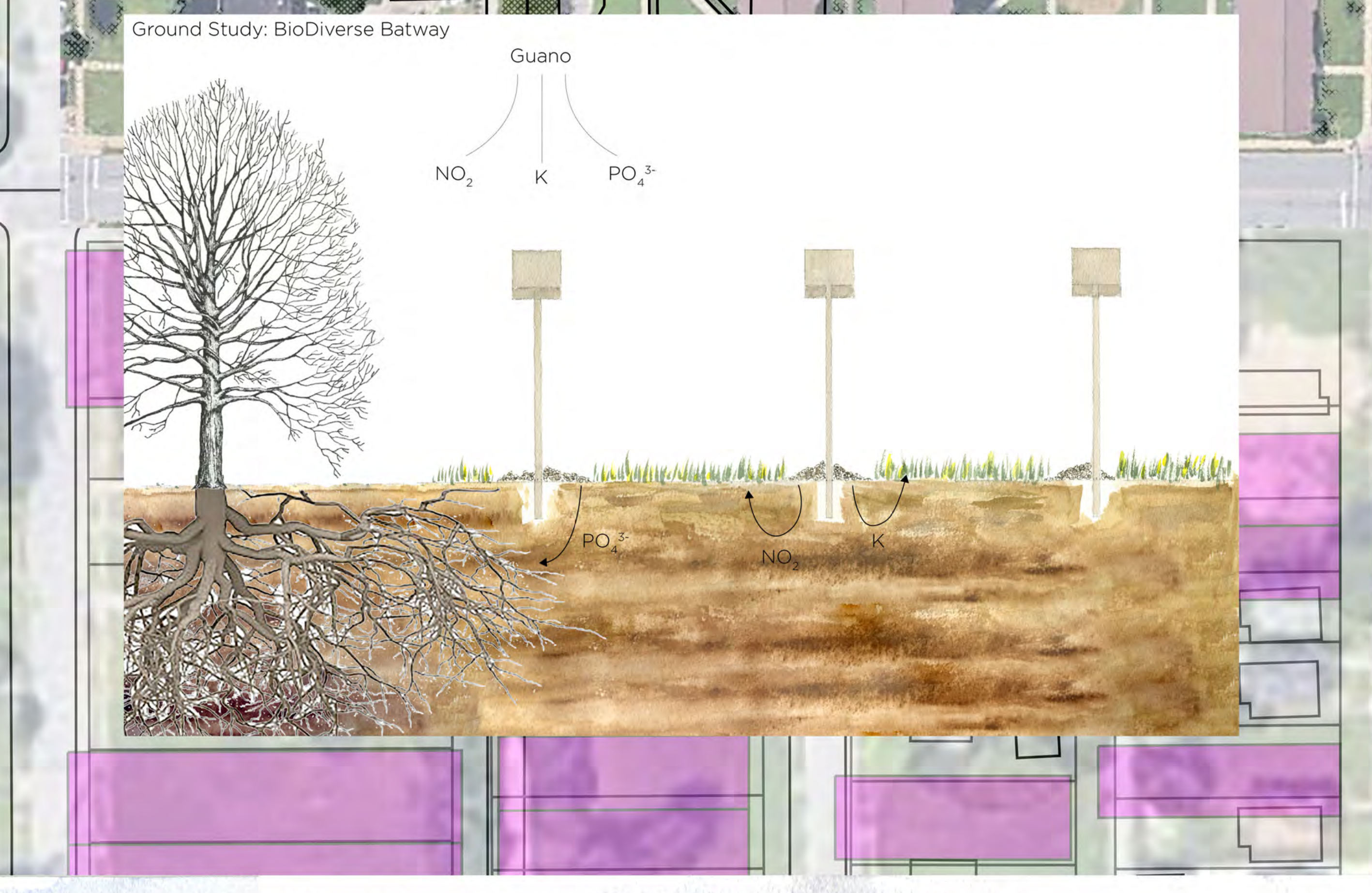


**Field Study:**

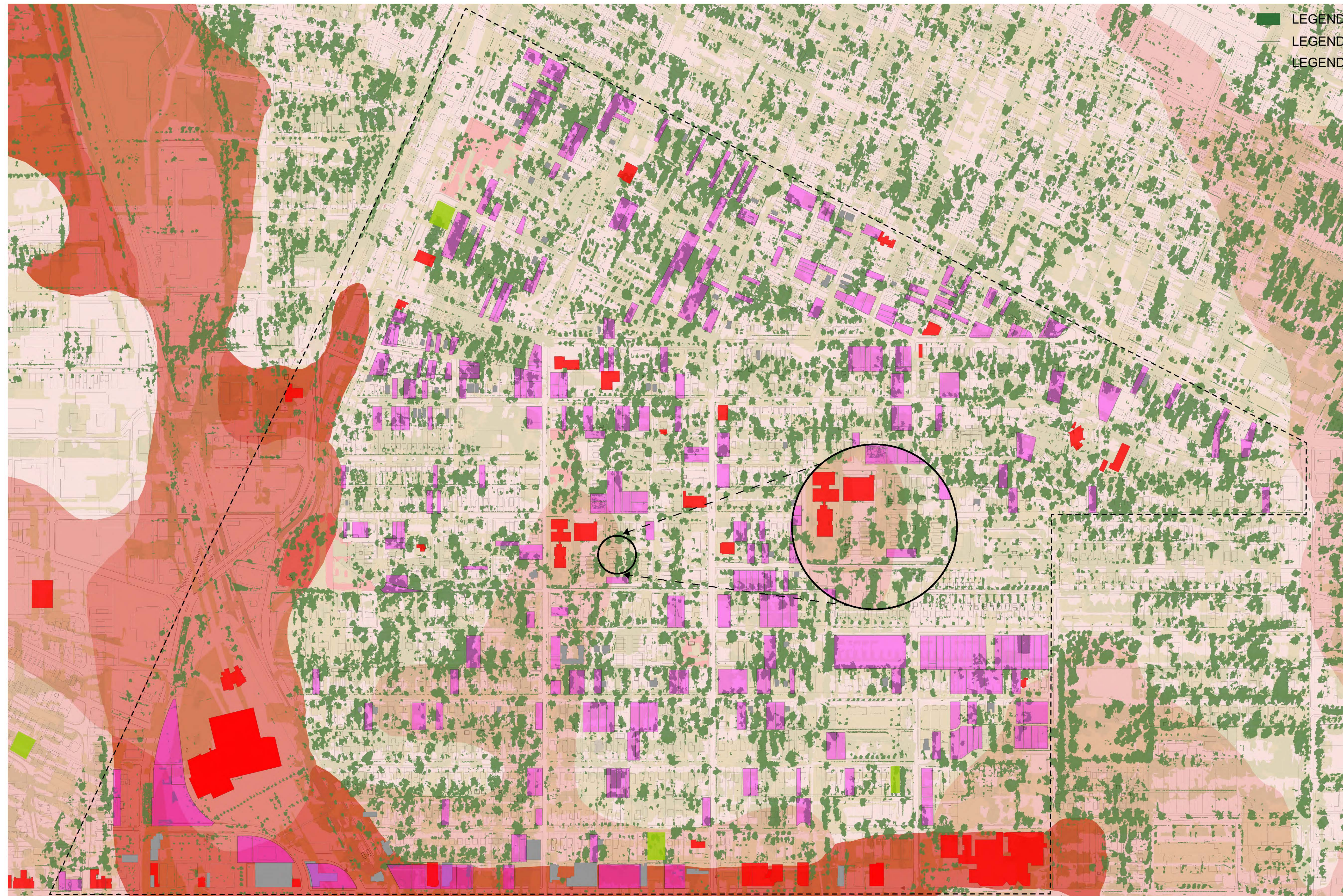
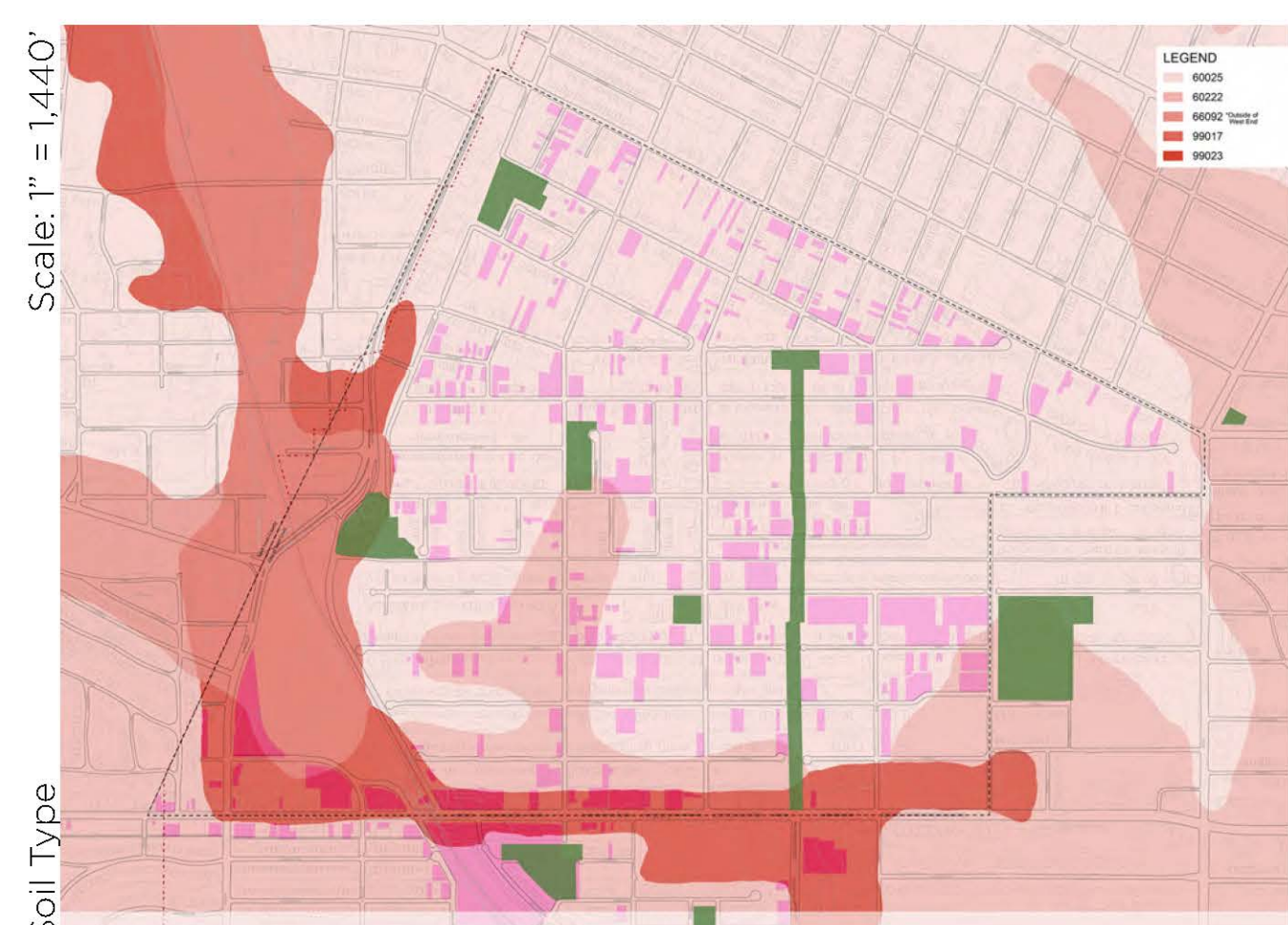
The little brown bat, *Myotis Lucifugus*, is the focus of this intervention. Not only is this tiny insect-eating bat an intriguing creature in its own right, it is also an excellent pollinator and important contributor to the urban ecosystem; its droppings function as a superior fertilizer for plant growth.

A series of bat nesting boxes are placed on the verge between the Hodiamont Tracks and Laurel Street. Oak trees are planted within the paved surface of the inaccessible section of Laurel Street that runs parallel to the tracks forming a shady plaza and an active node. The oaks provide roosting sites and a rich food-source for the bats. Gabion benches promote community gathering and new paths strengthen access between the neighborhood and the Tracks.

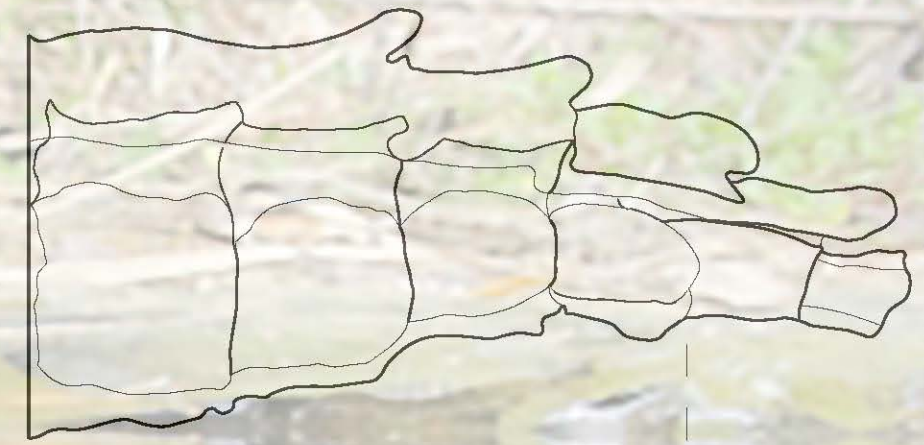
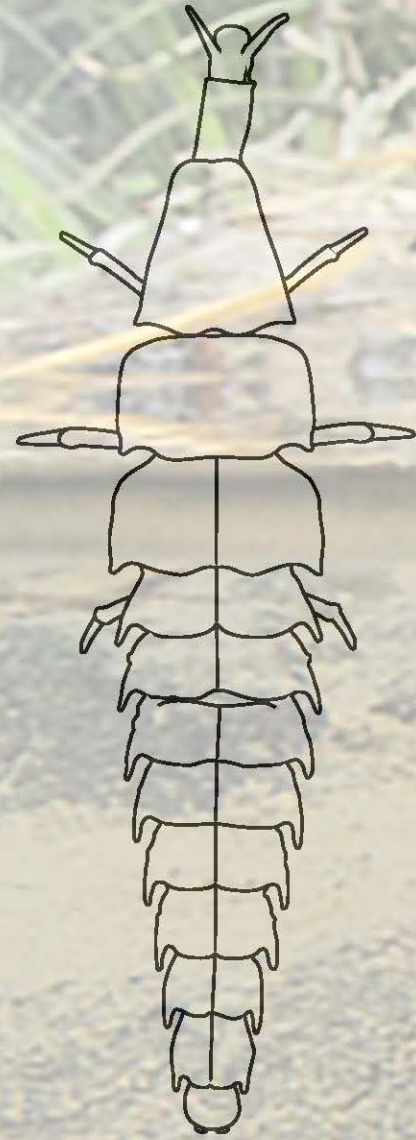
The bats offer educational opportunities, and local residents are encouraged to install additional bat boxes on their own homes.



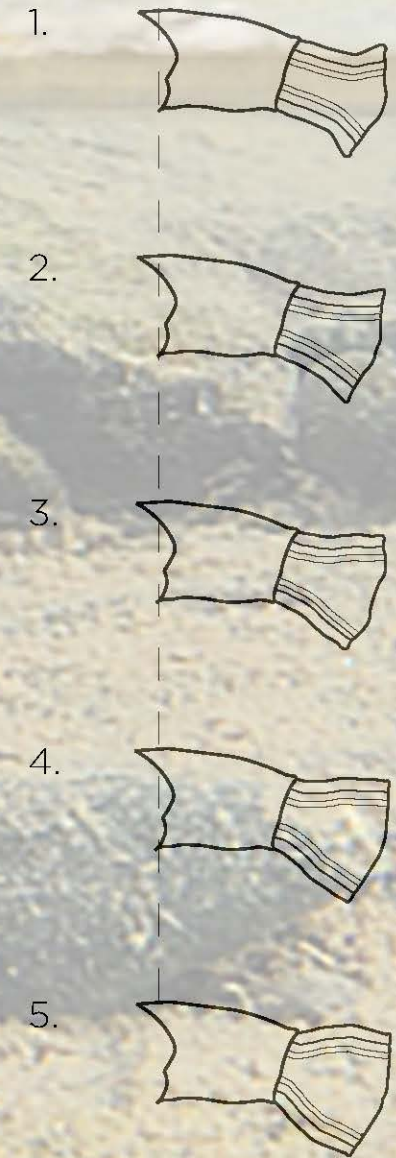
# Hodiamont Track Study: Grounding



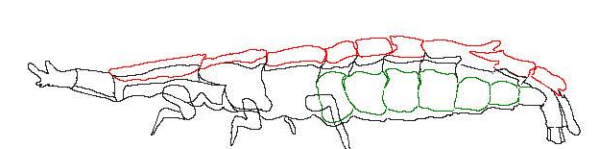
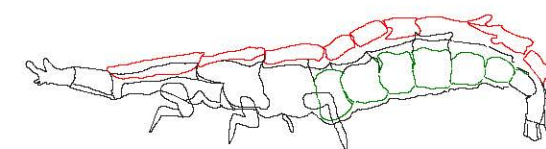
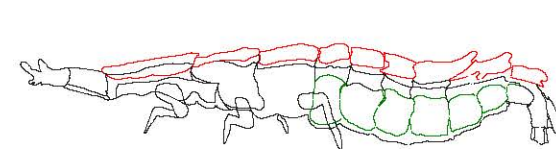
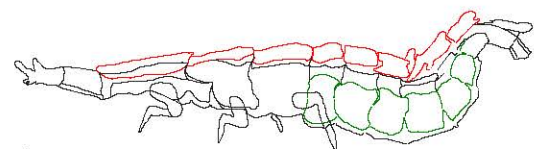
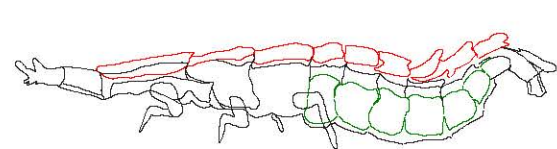
# Pyractomena Borealis: Grounding Movement



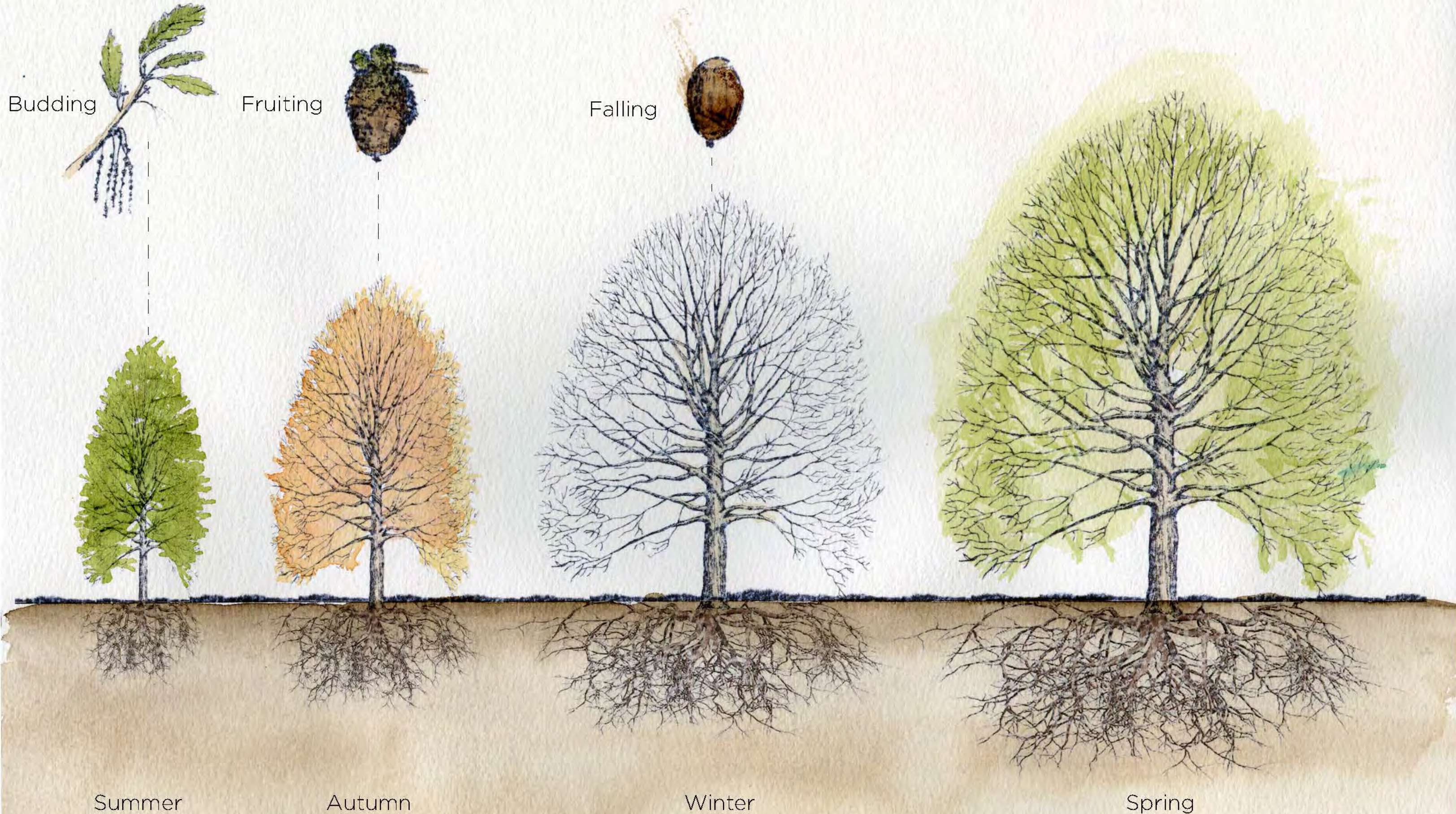
Caudal Grasping Organ



## Movement Study:

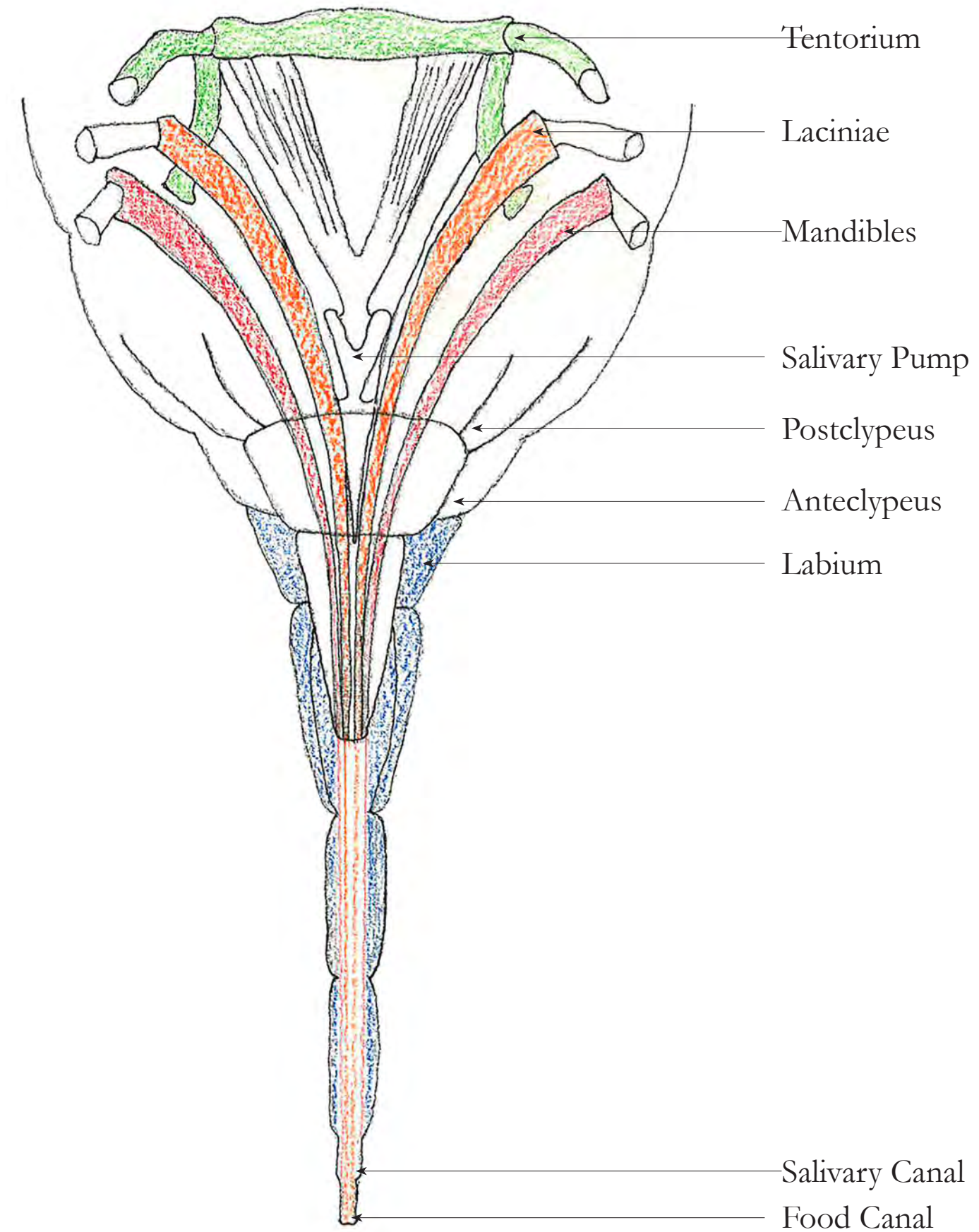


Quercus Bicolor: Swamp White Oak



# Biodiverse Batway | Interactive Study

Piercing Sucking Mouthpiece



Cicadellidae Nymph



Cicadellidae Adult

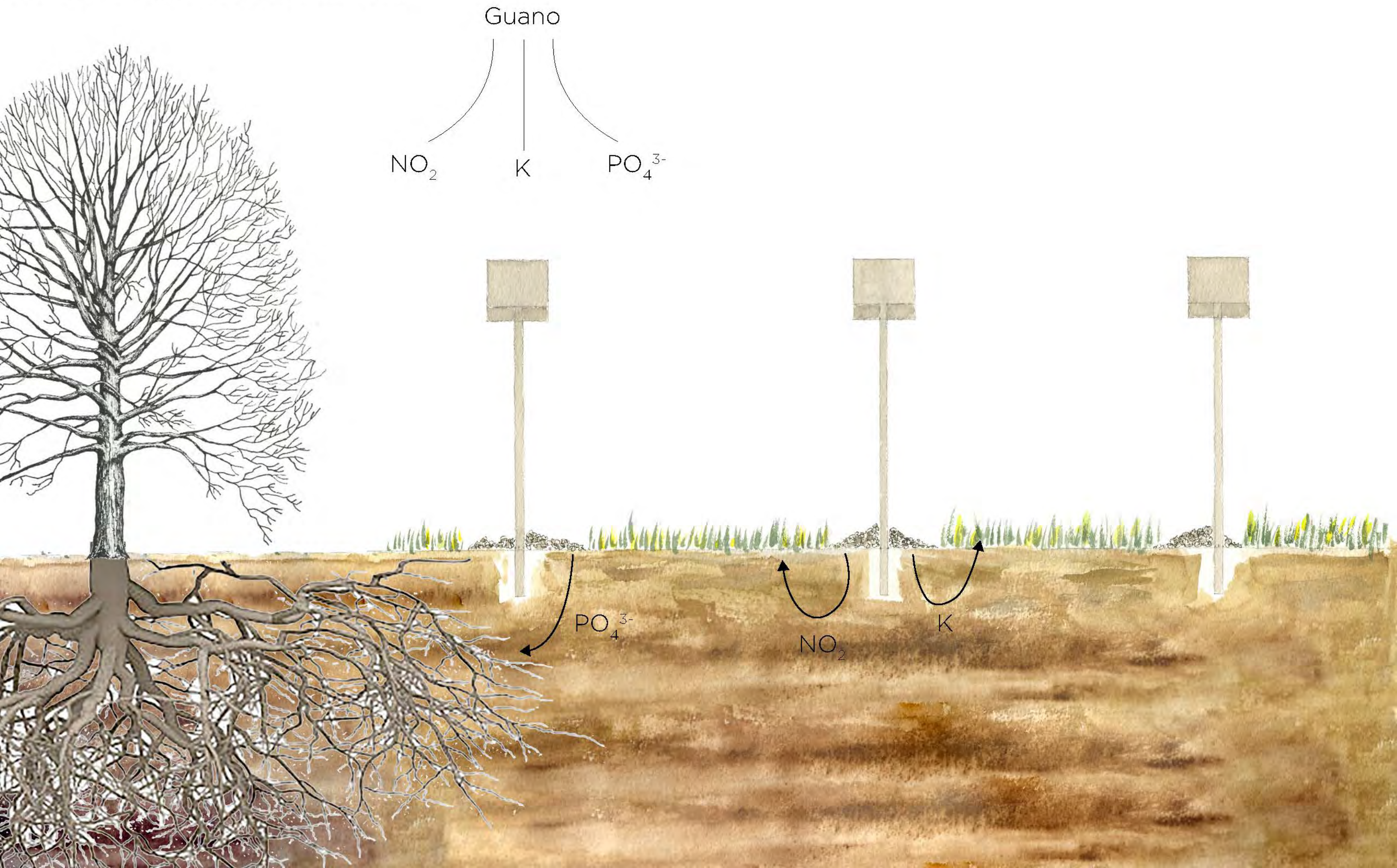


Quercus Bicolor Summer



Quercus Bicolor Spring

# Ground Study: BioDiverse Batway



Initial Intervention:



Five Year Study:



Ten Year Study:

