

Washington University in St. Louis
Washington University Open Scholarship

Margetts Beeline

St. Louis Projects, Office for Socially Engaged
Practice

5-2019

Gwen Giles Park Turtle Time Track

Martine Kushner

Washington University in St. Louis

Follow this and additional works at: https://openscholarship.wustl.edu/spring2019_margetts



Part of the [Urban, Community and Regional Planning Commons](#)

Recommended Citation

Kushner, Martine, "Gwen Giles Park Turtle Time Track" (2019). *Margetts Beeline*. 7.
https://openscholarship.wustl.edu/spring2019_margetts/7

This Studio Board is brought to you for free and open access by the St. Louis Projects, Office for Socially Engaged Practice at Washington University Open Scholarship. It has been accepted for inclusion in Margetts Beeline by an authorized administrator of Washington University Open Scholarship. For more information, please contact digital@wumail.wustl.edu.

GWEN GILES PARK TURTLE TIME TRACK

Gwen Giles park, the victim of misguided urban renewal efforts, still contains evidence of its rich ecological history and the significant role it once played in the community. The installation of a mile-long jogging track with distance markers and outdoor fitness equipment takes advantage of the altered topography and the rich bottomland soil; the legacy of a once-thriving prairie ecosystem.

The Catalpa tree, for which the park was previously named, is reintroduced, and a field of Goldenrod on the mounds becomes the catalyst for on-site biodiversity. Central to the proposal is the introduction of an Ornate Box Turtle. Shelters for these turtles are inserted into the mounds and areas of water collection are exaggerated through regrading in order to create an ideal habitat for this threatened species.

A proposed partnership with the nearby Hodiamont House provides space for educational workshops, exercise clubs, and a range of after-school programs providing opportunities for community members to engage with the park.



1/2 Mile
Species Spotlight
Goldenrod Gall Fly

Neighborhood Assets

- MetroLink
- Metro Stops
- Bus
- Bus Stops
- Greenways
- Parks
- Hodiamont Track

Buildings & Parcels

- Vacant Building
- Vacant Lot
- De Hodiamont House
- Education, Arts, & Outreach
- Institutional & Healthcare
- Religious Facilities
- Mixed Use
- Commercial

Historic Landcover

- Woodland
- Open Woodland
- Prairie
- Barren/Scrub

Hydrology & Topography

- Watershed
- Mackenzie Creek
- Regulatory Floodway

Soil Types

- 60025 Urban Land - Harvester Complex
- 60228 Urban Land - Harvester Complex
- 99017 Urban Land - Bottomland
- 99023 Urban Land - Upland

situational assemblage / dynamic intensities



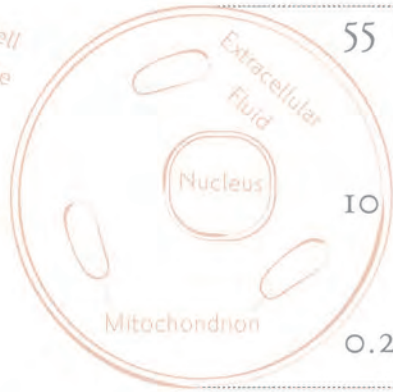
Diapause & Freeze Tolerance in the Goldenrod Gall Fly (*Eurosta Solidaginis*)



- ▲ Antifreeze Proteins
- Ice-Nucleating Proteins
- Trehalose
- Cryoprotectant



Typical (non E.S.) cell:
Frozen Without Protection



E.S. Larva cell at
normal temperature

Diapause Intensity

Mass (mg)

CO₂ Production
($\mu\text{l CO}_2 \cdot \text{g}^{-1} \cdot \text{h}^{-1}$)

Supercooling Point
(°C)

Freeze Tolerance
(% surviving -25°C)

Cryoprotectant
Production
($\mu\text{mol} \cdot \text{g}^{-1}$ fresh wt.)

Induction

Refractory

Activated

Termination

Pupal

Emergence

Freezing Begins

Water

Solute

Larva Cell in Diapause:
Frozen with Protection

Glycerol

Sorbitol

May

June

July

August

September

October

November

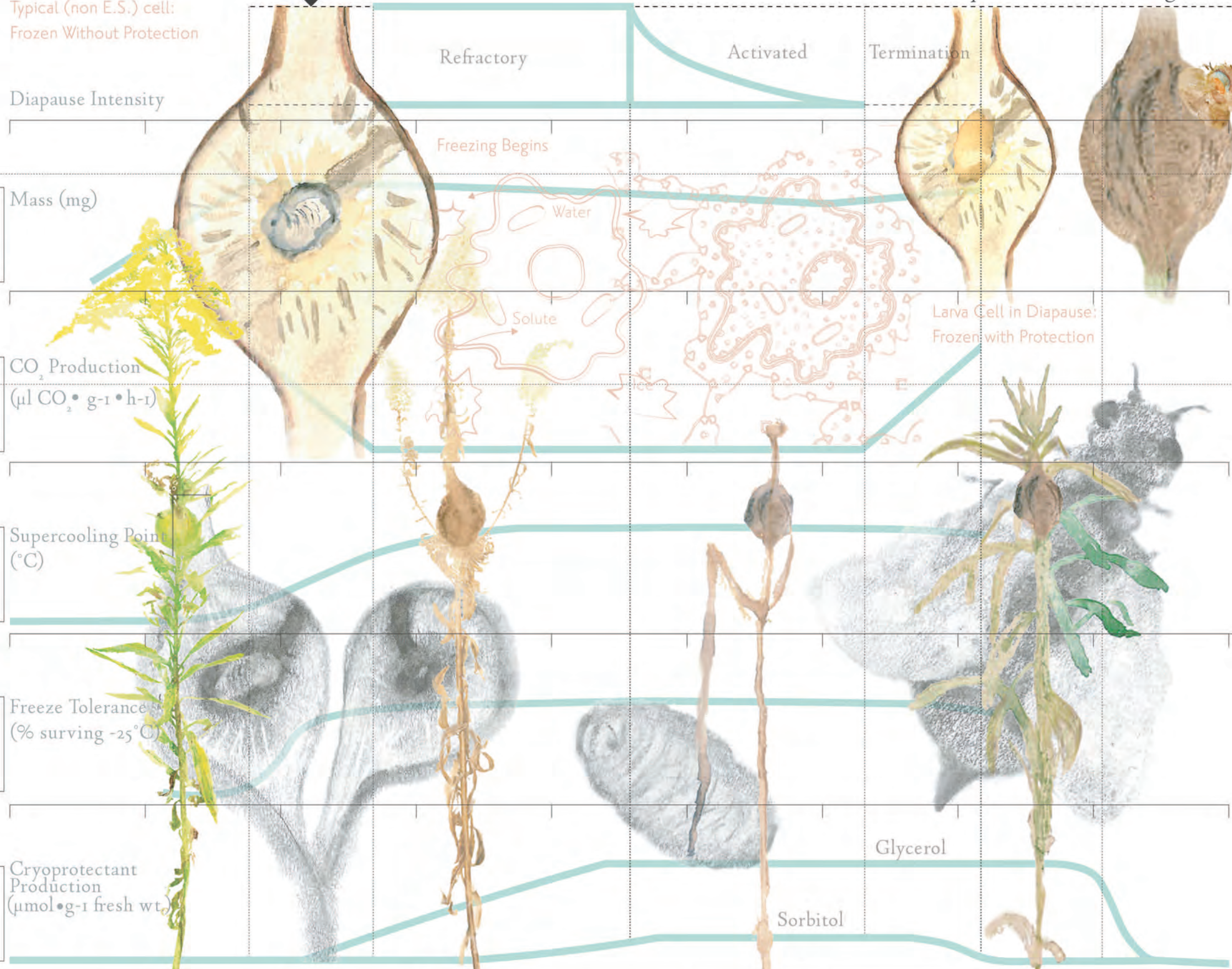
December

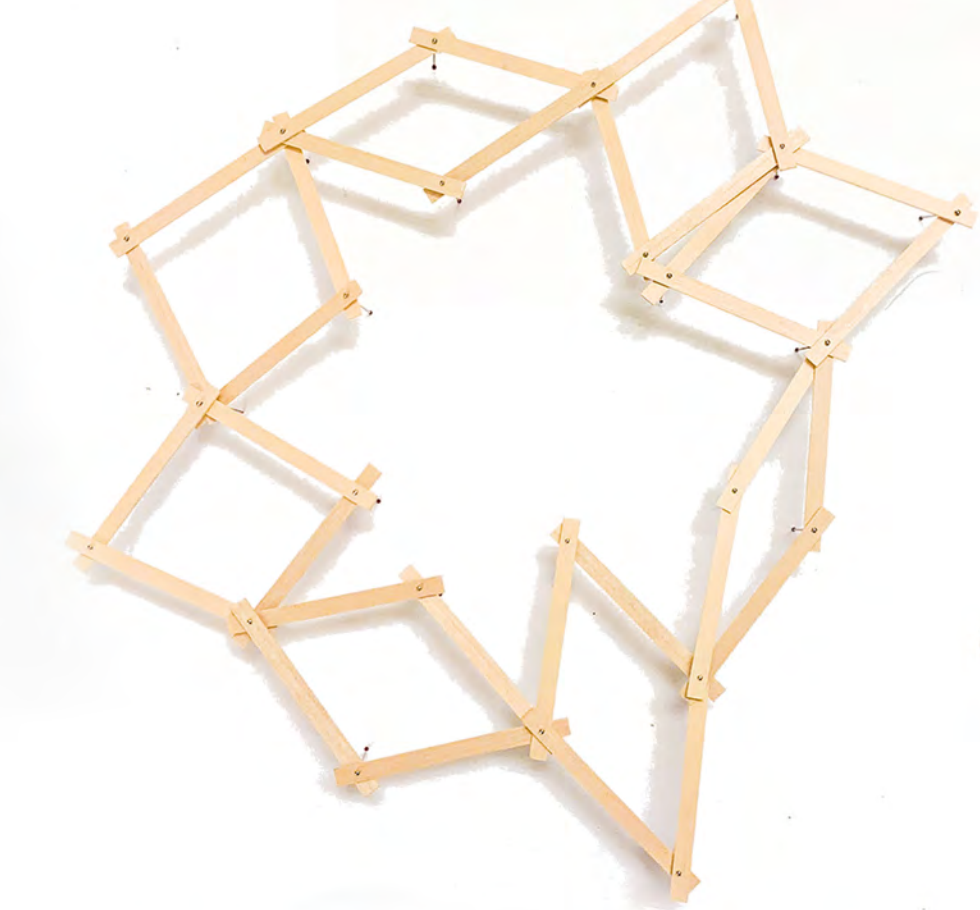
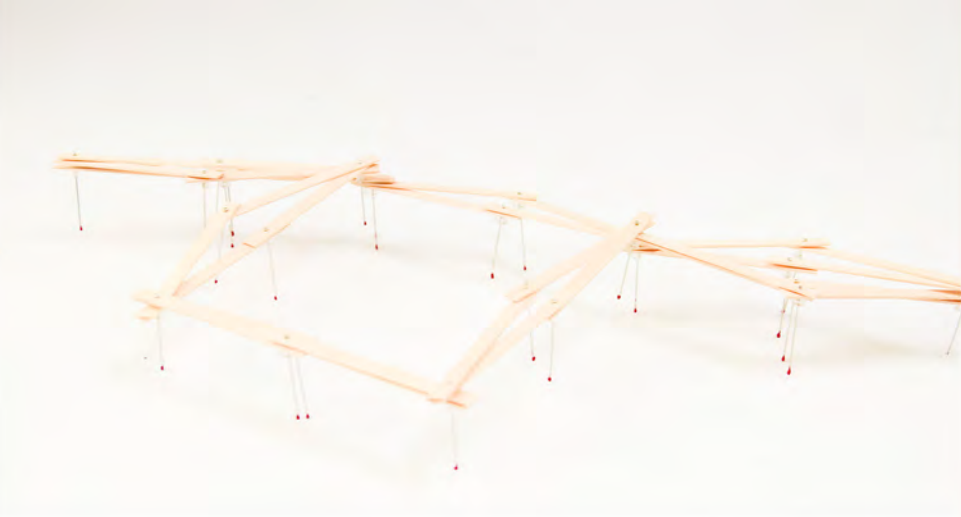
January

February

March

April

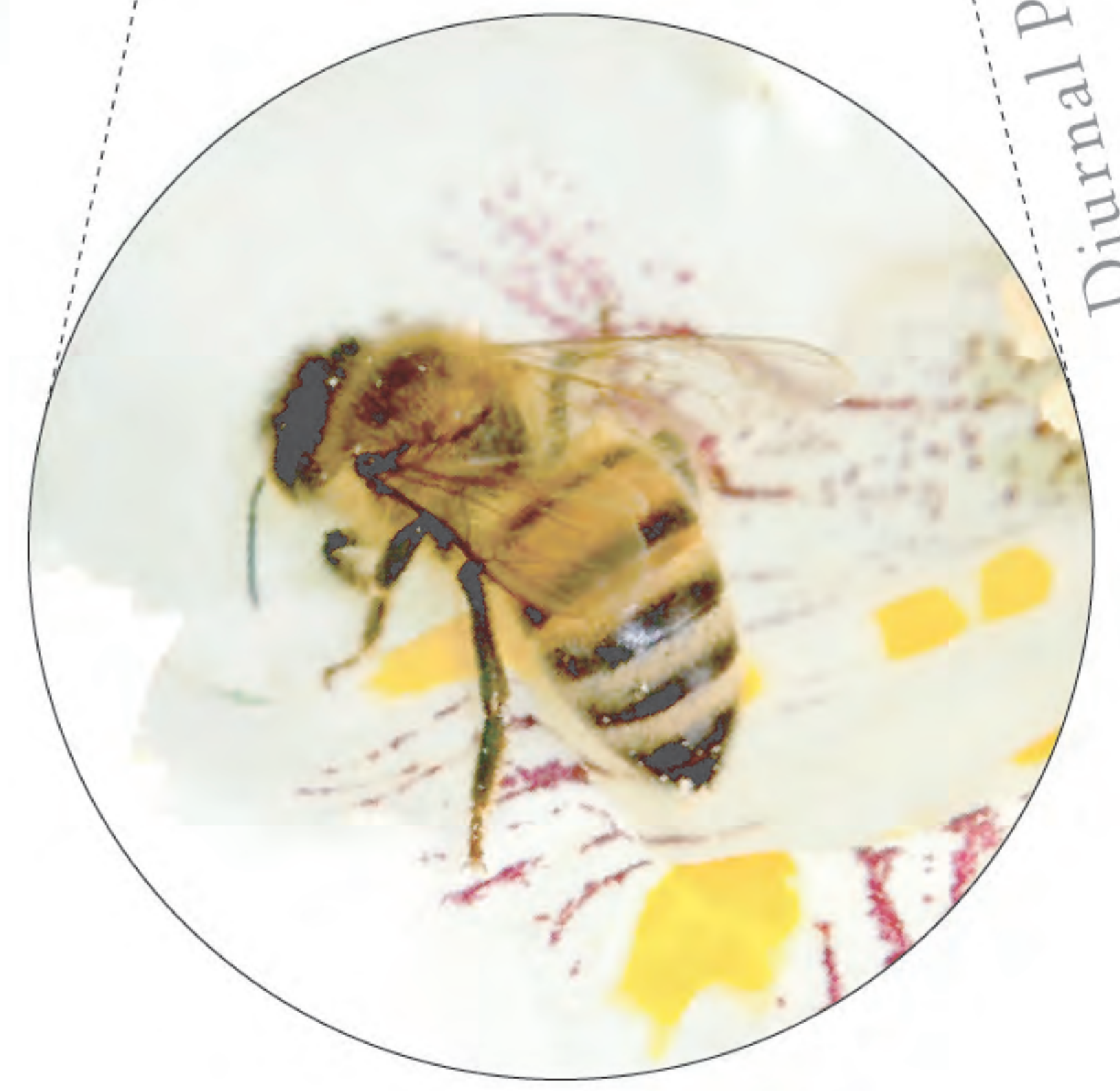




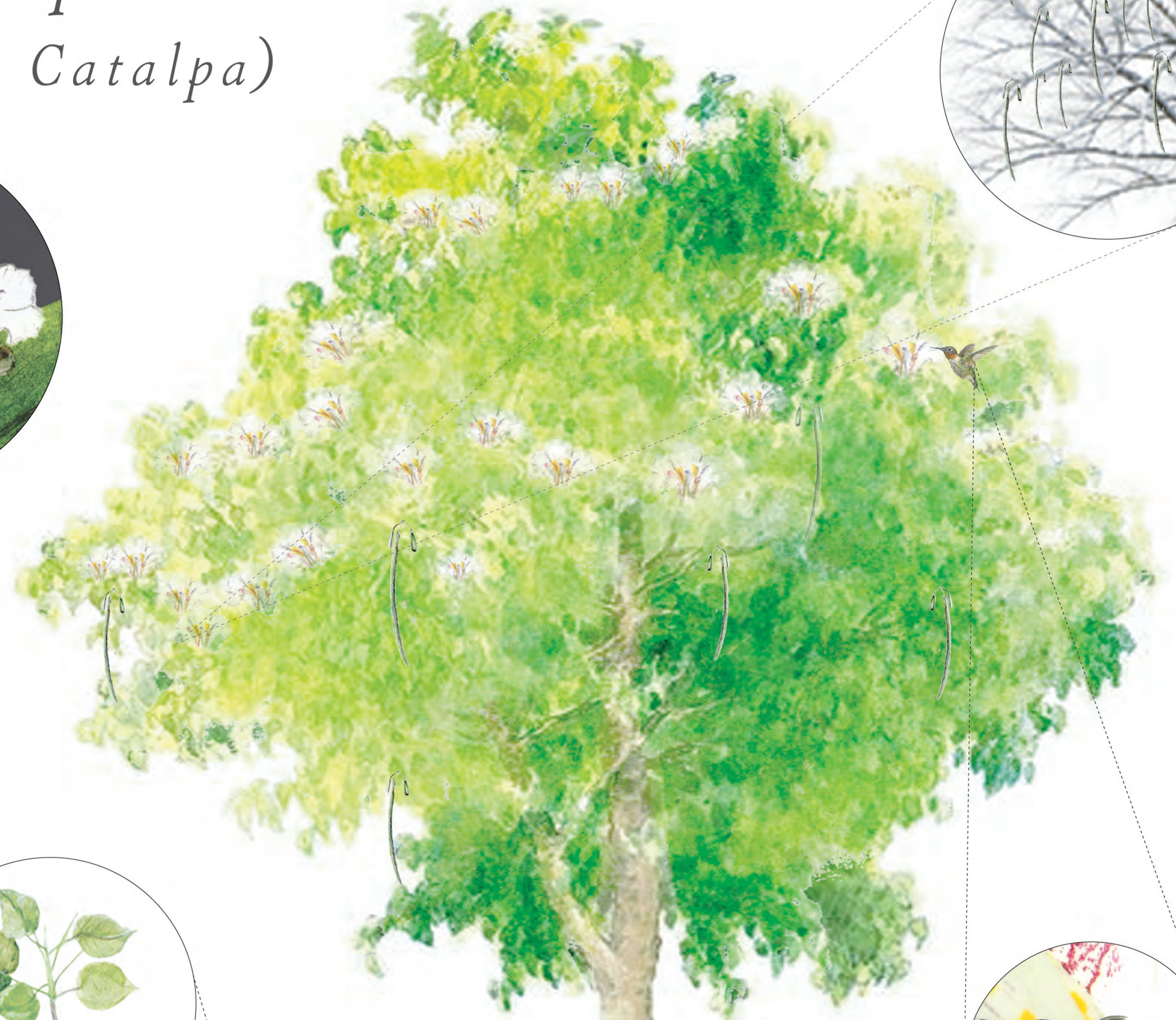
Catalpa Speciosa (Northern Catalpa)



Nocturnal Pollination



Diurnal Pollination



Ceratomia Catalpae (*Catalpa Sphinx*)



Lasiocampidae, Sphingidae, Geometridae, Ctenuchidae, Noctuidae







WEST END*

Catalpa Park Extension - 3.1 acres featuring a unique

"Fortress on a Hill", swings, etc.

9. St. Luke's Hospital Addition \$2,250,000

10. Turnkey Project, 28 units, public housing

Approximately \$5 million has been spent on site improvements and another \$1.5 million is programmed for expenditures during the coming year for new sidewalks, paving, sewers, parks, and street trees on rights-of-way. Public facilities include:

1. Parkland Park - construction completed on the 3-acre area. Some of the features include play-ground equipment, horseshoe and shuffleboard courts, and landscape area.
2. Amherst Park - 3.8 acres providing multi-level walks, a paved plaza, wading pool, volleyball and basketball areas, and a tot lot.
3. Catalpa Park Extension - 3.1 acres featuring a unique "Fortress on a Hill", swings, etc.
4. Ruth C. Porter Mall - a landscaped area approximately 100 feet wide extending from Delmar Avenue, aligned with DeBaliviere Boulevard, to the terminus at Blackstone and Etzel Avenue intersection, to be completed in 1971.

In 1963, the area was declared blighted and the West End became a Federally-assisted Title I urban renewal area. Renewal in the West End commenced in September 1965, but has encountered considerable difficulties. Renovation of homes has lagged and a greater number of demolitions has occurred than anticipated. The unstable nature of the neighborhood, its size, and the resulting conflicting groups have resulted in delaying the project. Lack of adequate relocation facilities and a proposal to use vacant units in the Pruitt-Igoe Public Housing Project have contributed to the problems.

KIPP Victory Academy, the West End Conservation Club, deHodiamont House Historical Society, Friends of the Red Fox, and the Gwen Giles Box Turtle Rescue Team present...

(2023) ANNUAL HODIAMONT TRACK

HALF-MARATHON

Gwen Giles Park, 2019

Renamed after Civil Rights Activist Gwen B. Giles in 1986

GWEN B. GILES PARK

circa 2010

Ornate Box Turtles hatch

URBAN REDEVELOPMENT (TITLE I AND II)

EXISTING

PROPOSED

CATALPA SPECIOSA, NORTHERN CATALPA
NATIVE TO MISSOURI
HISTORICALLY PLANTED ON SITE

EASILY GROWN IN AVERAGE, MEDIUM
TO WET, WELL-DRAINED SOILS IN FULL
SUN TO PART SHADE. TOLERANT OF
A WIDE RANGE OF SOIL CONDITIONS
INCLUDING BOTH WET AND DRY SOILS.
TOLERANT OF SEASONAL FLOODING.
PREFERS MOIST FERTILE LOAMS

HISTORIC TALLGRASS PRAIRIE
BOTTOMLAND SOIL TYPE

SAINT LOUIS, MISSOURI