

Washington University in St. Louis
Washington University Open Scholarship

Margetts Beeline

St. Louis Projects, Office for Socially Engaged
Practice

5-2019

Cicada Grove

Helen Han

Washington University in St. Louis

Follow this and additional works at: https://openscholarship.wustl.edu/spring2019_margetts



Part of the [Urban, Community and Regional Planning Commons](#)

Recommended Citation

Han, Helen, "Cicada Grove" (2019). *Margetts Beeline*. 8.
https://openscholarship.wustl.edu/spring2019_margetts/8

This Studio Board is brought to you for free and open access by the St. Louis Projects, Office for Socially Engaged Practice at Washington University Open Scholarship. It has been accepted for inclusion in Margetts Beeline by an authorized administrator of Washington University Open Scholarship. For more information, please contact digital@wumail.wustl.edu.

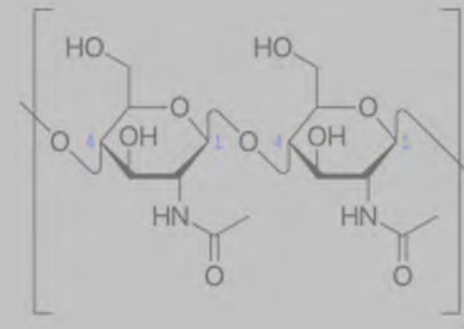
Neotibicen Canicularis (Dog-day Cicada)

HELEN HAN



Post-Emergence Empty Exoskeleton

The split appears starting between the compound eyes to end of thorax



Dog-day Cicada is an arthropod, which means that their bodies are not supported by any internal bones. Their bodies are held together by a hardened exoskeleton made of chitin



The annual cicada spends years underground as nymph. The nymph molt in 5 growth periods (instars). Before its last instar, the matured nymph emerge from underground during the night. It climbs to any nearby vertical structure and prepares for its emergence from the exoskeleton.



SITUATIONAL ASSEMBLAGE

Helen Han

Commercial Buildings
(restaurants,
grocery stores,
etc.)

Vacancy & Abandonment

Lower-Income
Neighborhoods
(Below 12,25k
annually)

Social Confluences





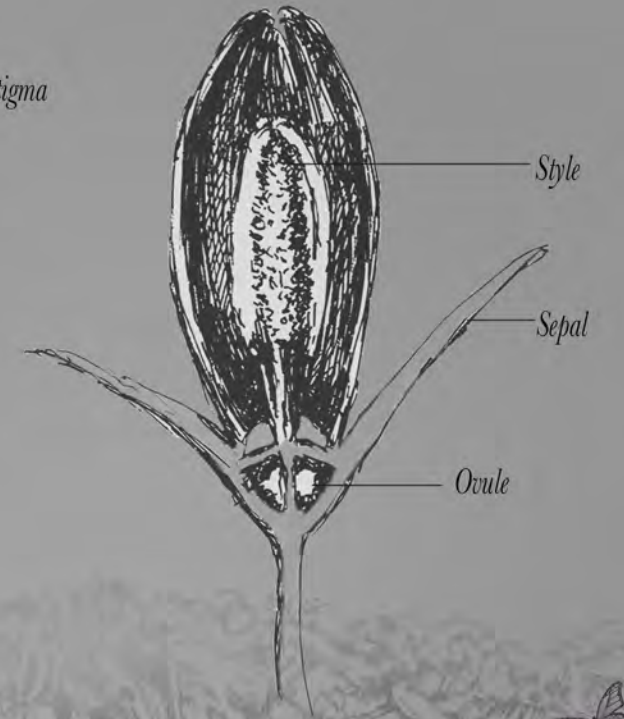
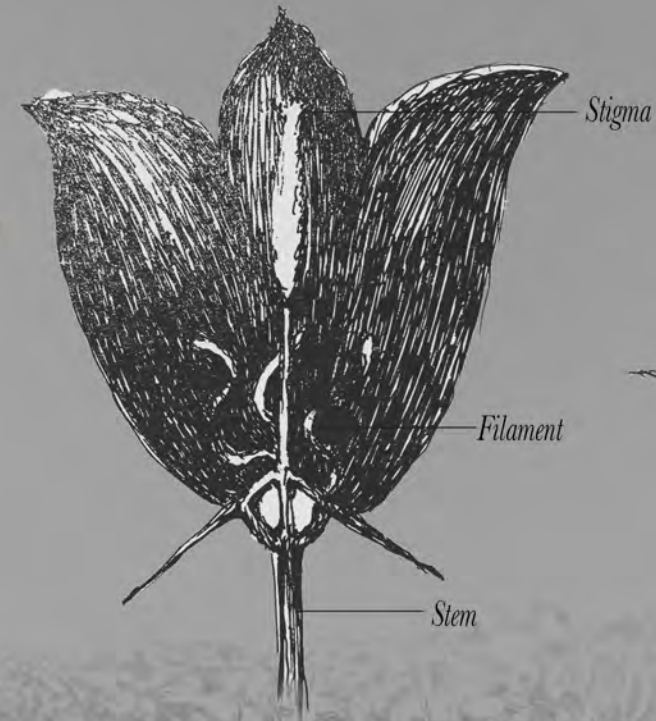
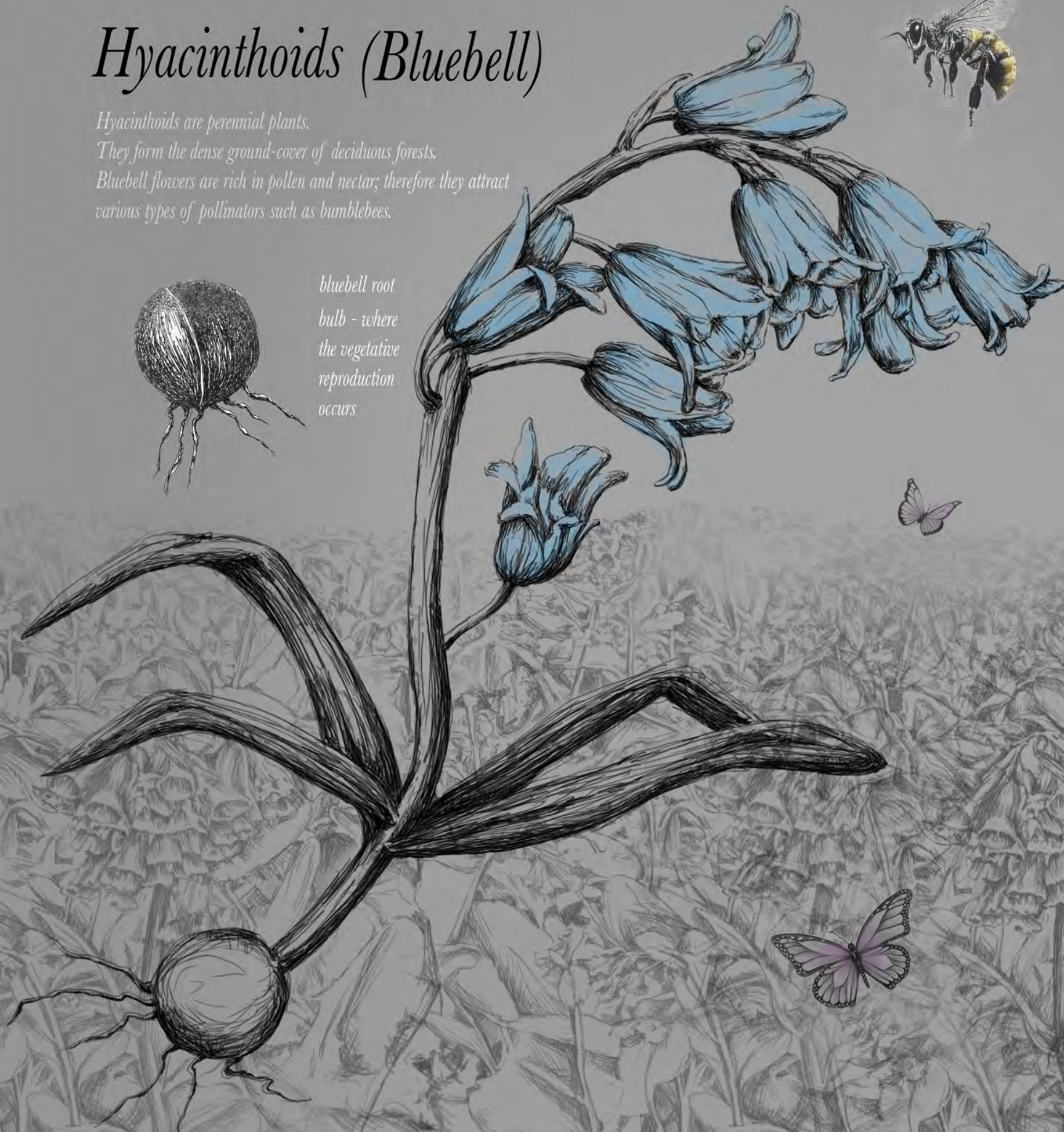
Hyacinthoids (Bluebell)

Hyacinthoids are perennial plants.

They form the dense ground-cover of deciduous forests.

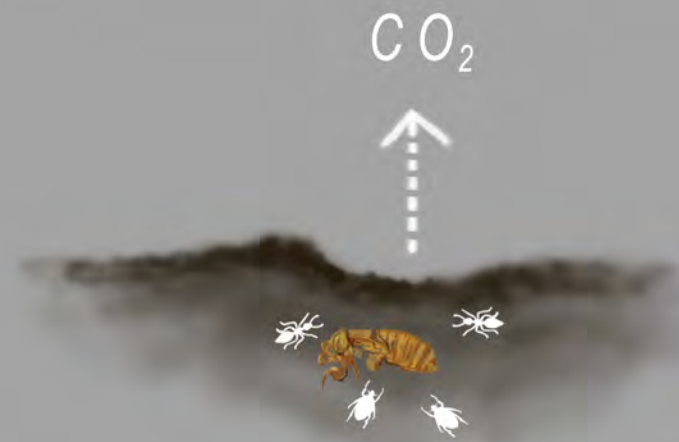
Bluebell flowers are rich in pollen and nectar; therefore they attract various types of pollinators such as bumblebees.

*bluebell root
bulb - where
the vegetative
reproduction
occurs*





The cicada carcass falls to the ground



Through time, the body of the cicada decomposes under the soil and produces carbon.



The gentle throb of cicada song is an essential element of hot summer nights. Their annual performance not only reminds people of a carefree childhood, but also signals a rich ecosystem. The cycle of cicada emergence is emblematic of the natural cycles of growth and decay.

This project proposes a neighborhood hub - an epicenter of cicada habitat and social activities. Located in the heart of the historical West End neighborhood and sited between apartment complexes, parking lots, and a playground, Cicada Grove is both a productive garden, a gathering space, and a place of repose where the song of the cicada transcends all.

1st year

5th year

10th year



community garden

composting & recycling

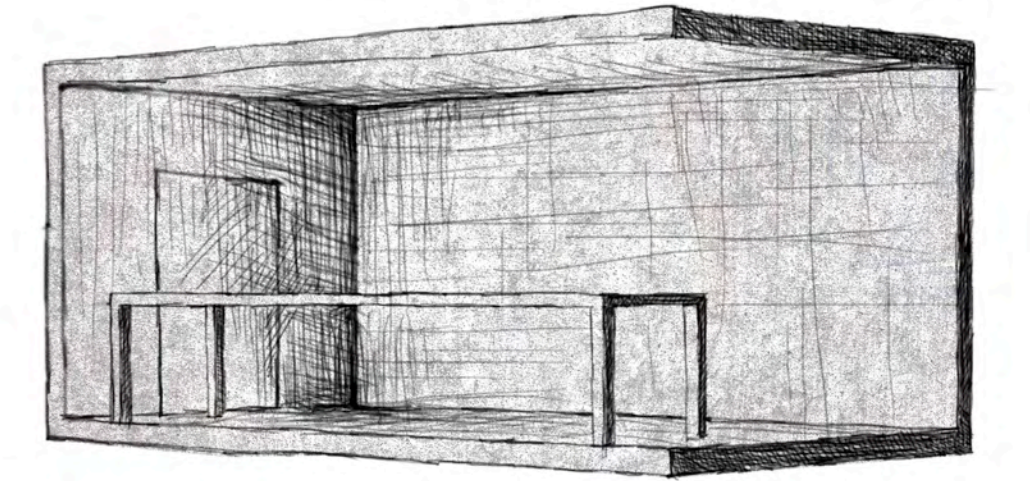
harvesting

cooking demonstrations

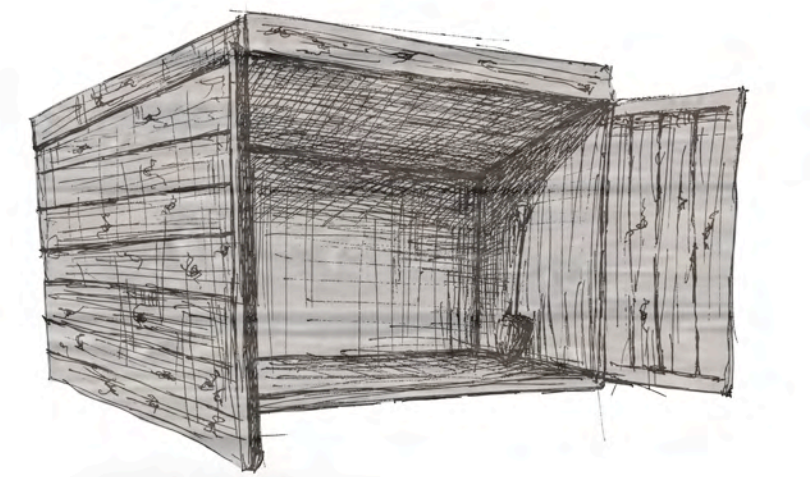
Maintenance

COMPONENTS

Indoor Kitchen



Tool Shed



High Tunnel

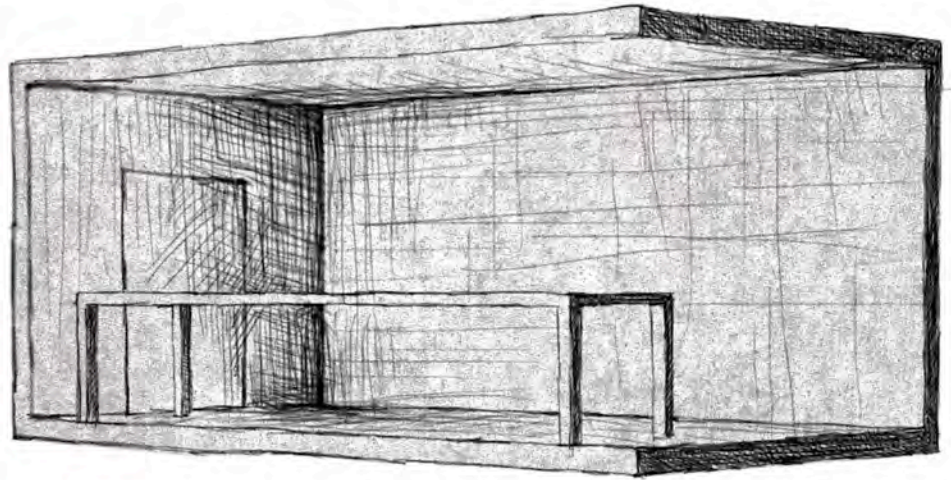


Vegetable Bed

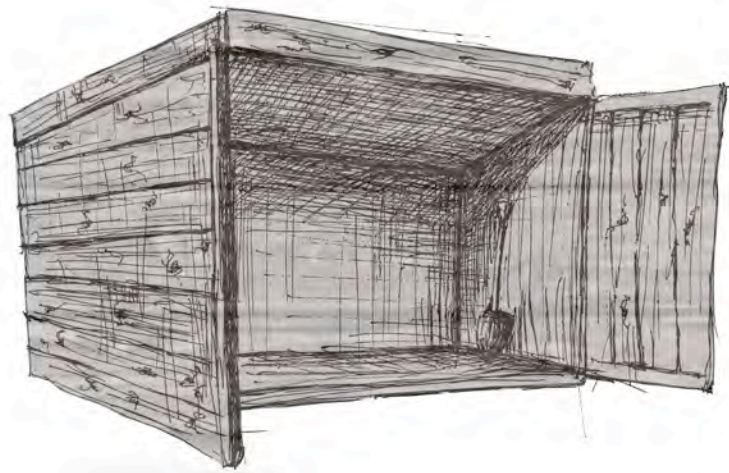


COMPONENTS

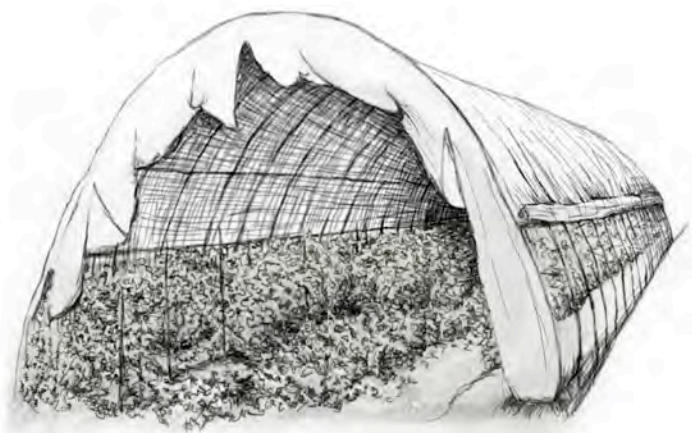
Indoor Kitchen



Tool Shed



High Tunnel



Vegetable Bed







