

Washington University in St. Louis

## Washington University Open Scholarship

---

Fall 2019 Confluence: St. Louis and Hinterlands

---

5-2020

### The Meeting of Water, Trash, & Us

Xue Ying

*Washington University in St. Louis*

Follow this and additional works at: [https://openscholarship.wustl.edu/fall2019\\_stanek](https://openscholarship.wustl.edu/fall2019_stanek)



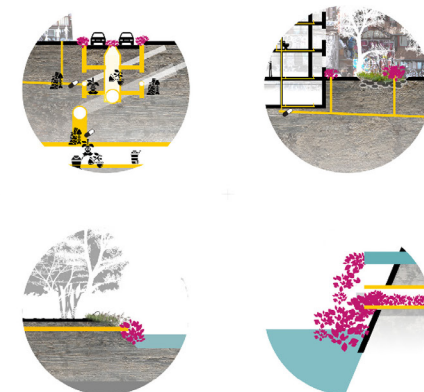
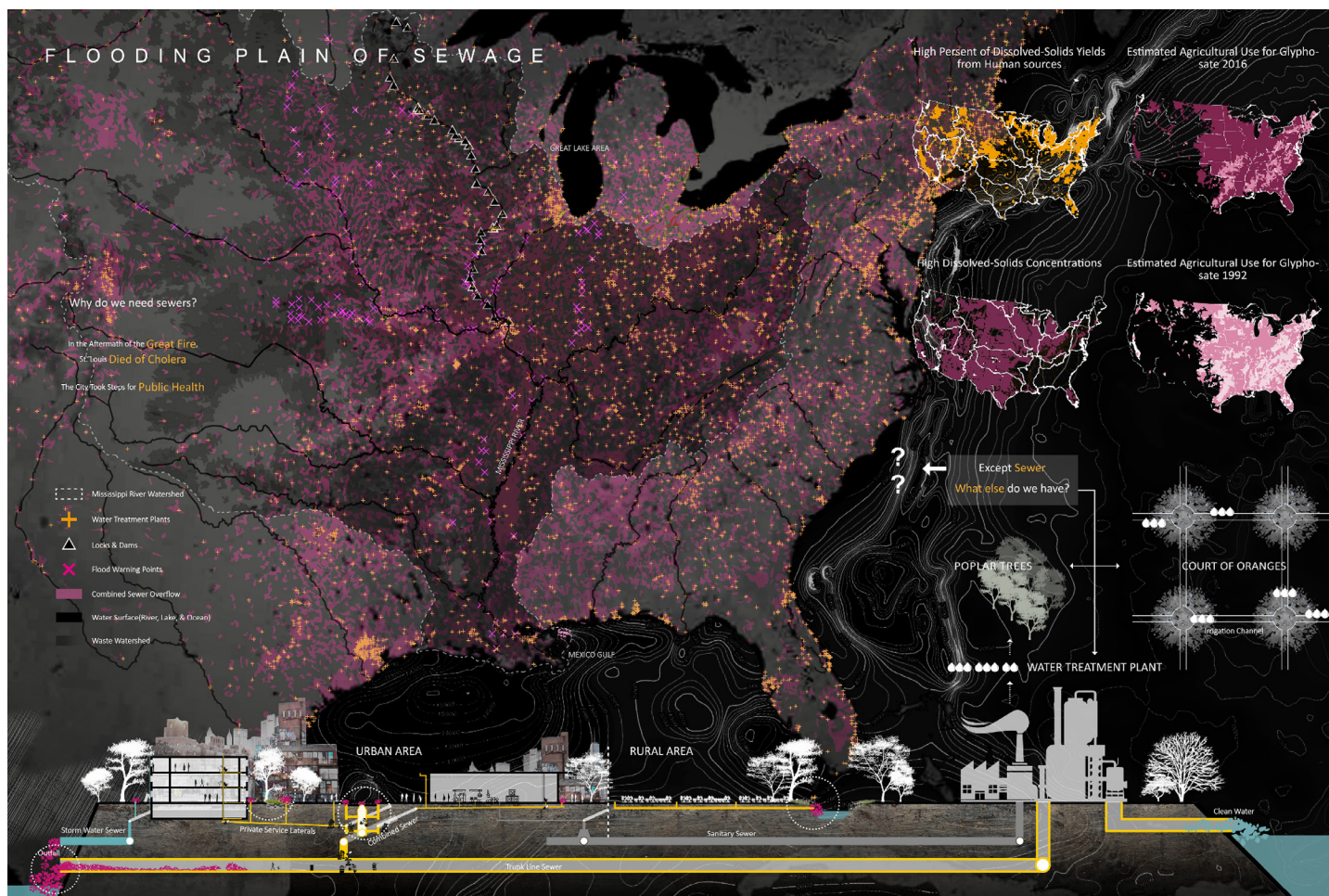
Part of the [Landscape Architecture Commons](#)

---

#### Recommended Citation

Ying, Xue, "The Meeting of Water, Trash, & Us" (2020). *Fall 2019 Confluence: St. Louis and Hinterlands*. 5.  
[https://openscholarship.wustl.edu/fall2019\\_stanek/5](https://openscholarship.wustl.edu/fall2019_stanek/5)

This Studio Board is brought to you for free and open access by Washington University Open Scholarship. It has been accepted for inclusion in Fall 2019 Confluence: St. Louis and Hinterlands by an authorized administrator of Washington University Open Scholarship. For more information, please contact [digital@wumail.wustl.edu](mailto:digital@wumail.wustl.edu).



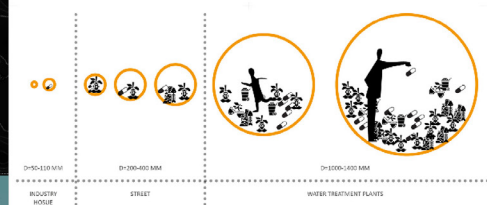
Missouri Facts - Did you know?

53% of publicly owned treatment works (POTWs) in Missouri have a design flow of 100,000 gallons per day or less and serve a population equivalent of 1,000 or less.

Missouri has 861 discharging lagoon wastewater treatment facilities.  
Missouri has 147 no-discharge facilities.

25% of the construction permit applications received by the department from 2013 to 2016 were for the construction of no-discharge facilities.

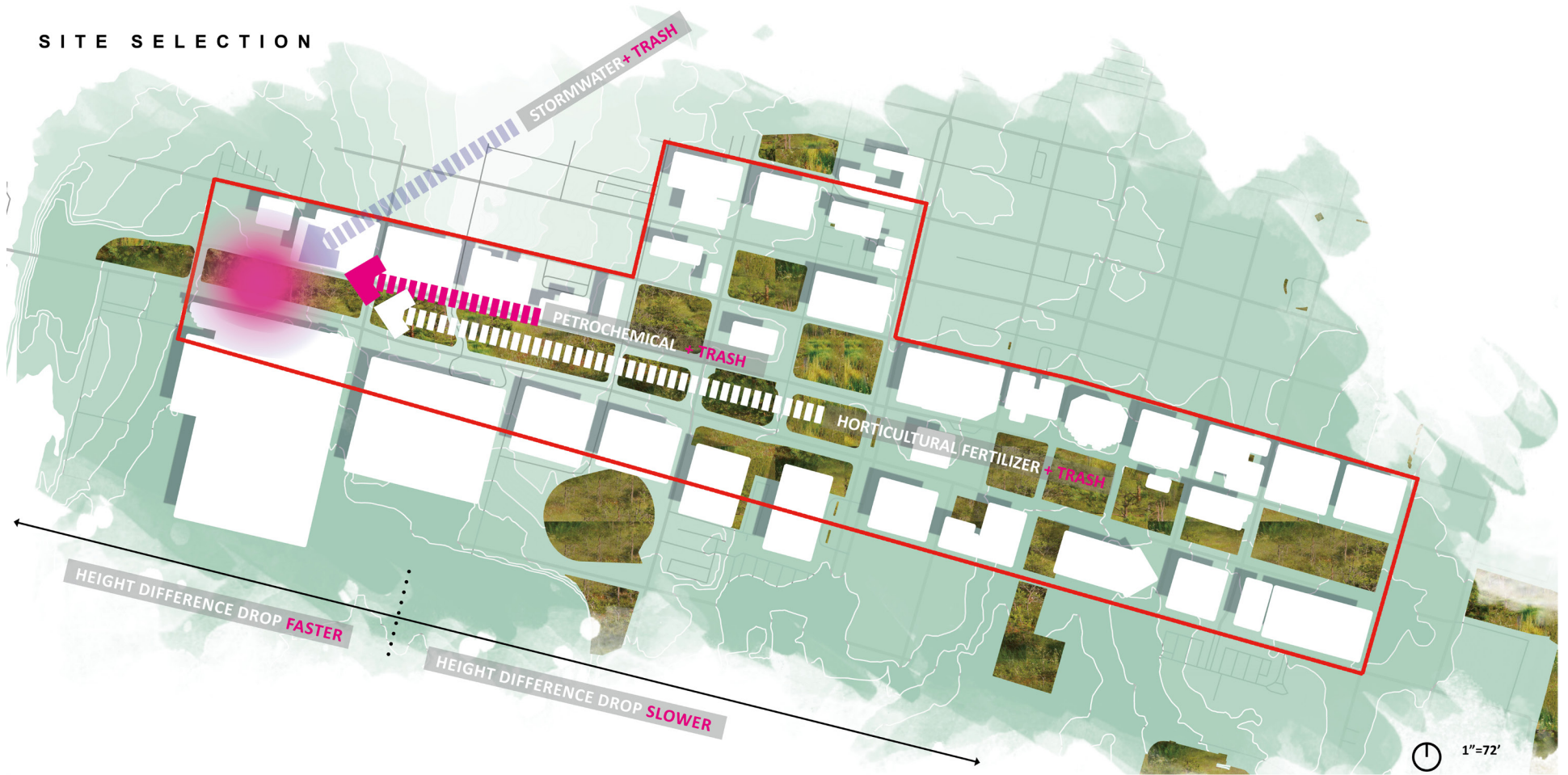
\* This data was collected from the department's Missouri Clean Water Information System on June 23, 2016.  
\* Missouri Department of Natural Resources, Missouri Department of Natural Resources







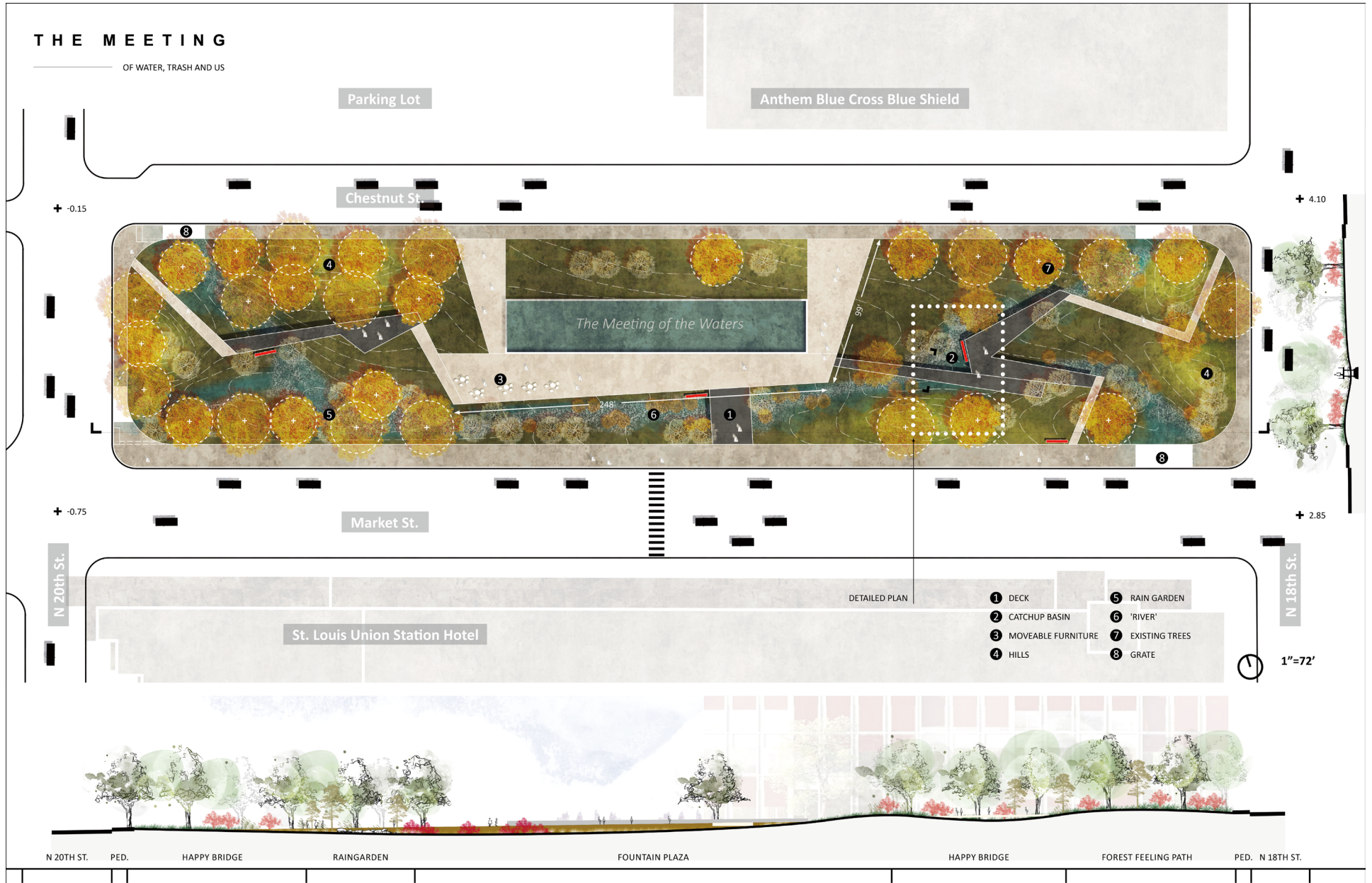
## SITE SELECTION

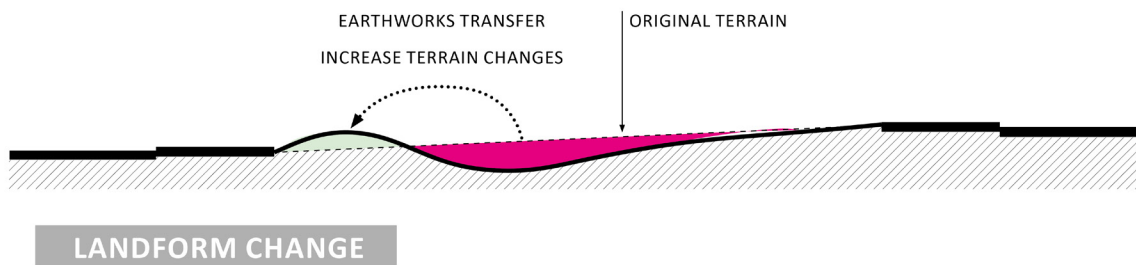
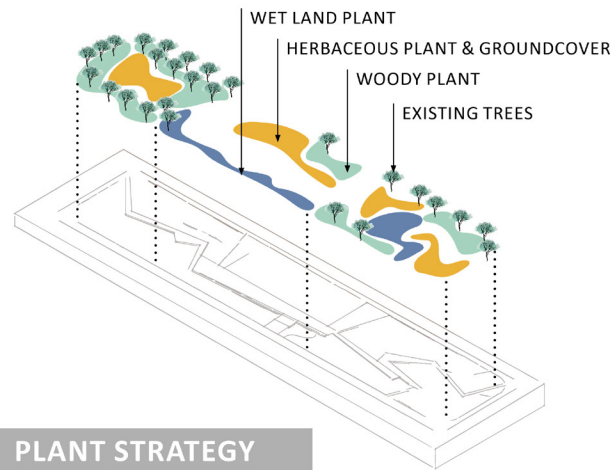
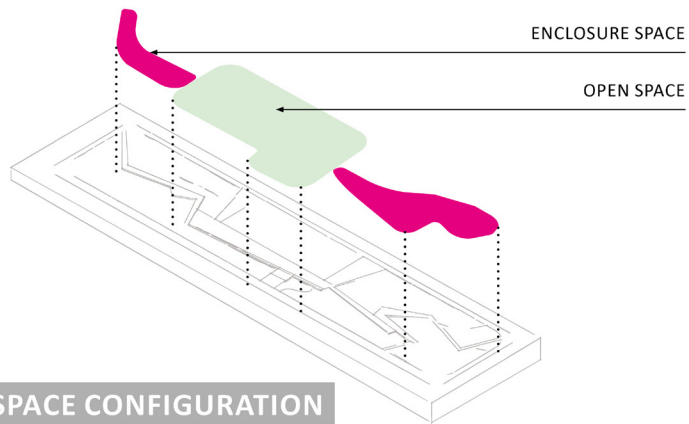




# THE MEETING

OF WATER, TRASH AND US





*Amelanchier arborea*



*Nyssa aquatica*

ARBORS



*Persicaria virginiana*



*Ageratina altissima*

HERBAL PLANTS



*Onoclea sensibilis*



*Carex crus-corvi*

GROUND COVER











**D E T A I L E D   S E C T I O N**

**3/4"=1'-0"**